

1319

MATERIÁL: M4.  
BOD: 2-1.

1145/13

15/3

15/6

1145/12

1021/2

64172

1145/39

1145/38

1145/37

1145/8

1317

1318

1349

57

1145/7

1145/6

1145/10

53

56

59

1453

1145/4

54

55

1145/2

1145/36

1145/1

1014/6

61

62

63/1

63/2

63/3

63/4

63/5

63/6

63/7

63/8

63/9

63/10

63/11

63/12

63/13

63/14

63/15

63/16

63/17

63/18

63/19

63/20

63/21

63/22

63/23

63/24

63/25

63/26

63/27

63/28

63/29

63/30

63/31

63/32

63/33

63/34

63/35

63/36

63/37

63/38

63/39

63/40

63/41

63/42

63/43

63/44

63/45

63/46

63/47

63/48

1353

1145/40

1145/41

1352

1351

1354

1355

1356

1350

Predmestská

7113

7114/4

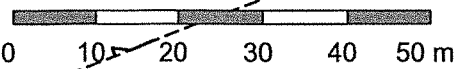
7114/1

1145/35

7108/86

7106/80

1:902



K.Ú. DLUHONICE

© GÚZK

1369 v.

1370

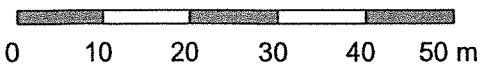
MATERIÁL: M.4-

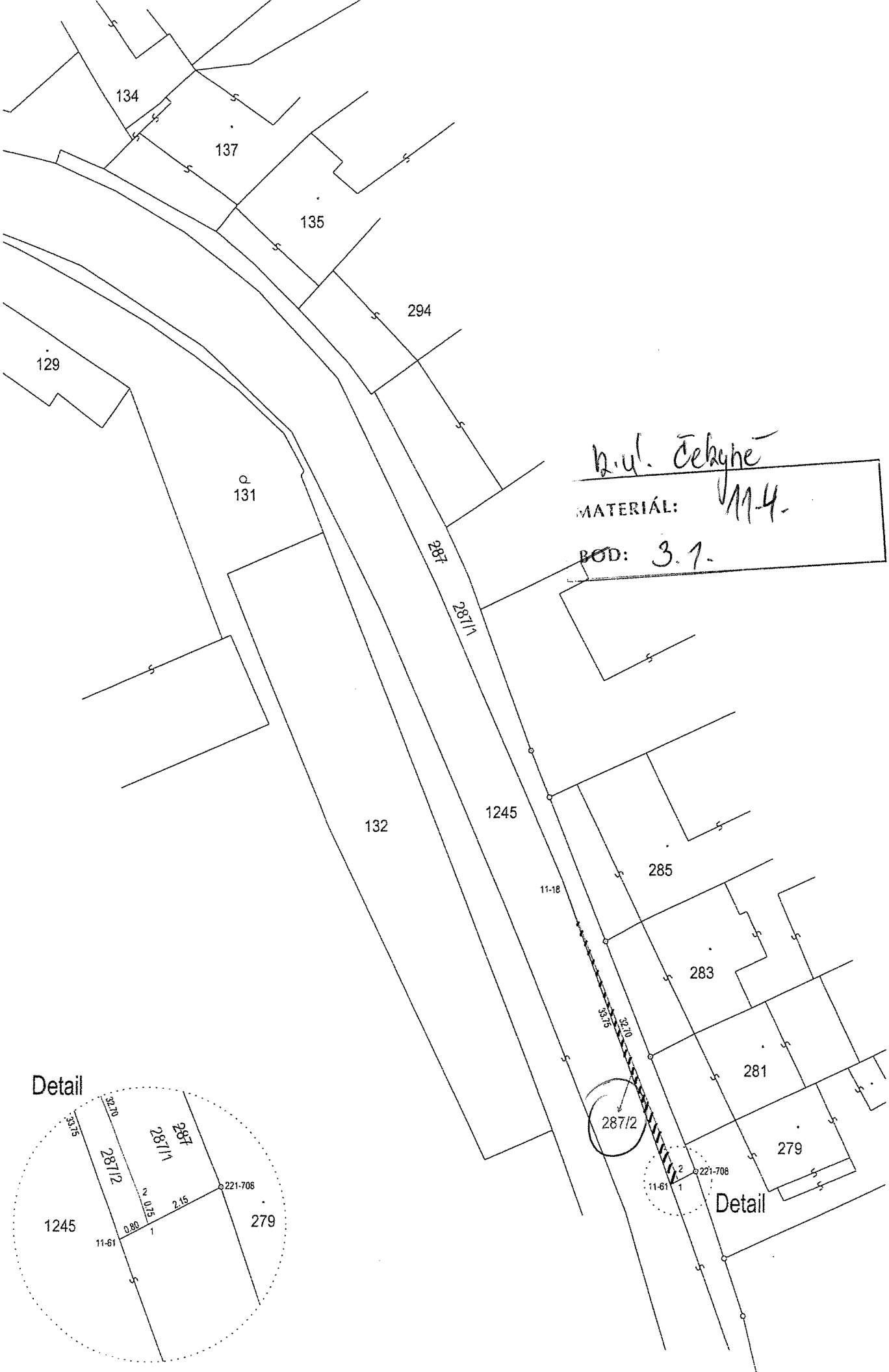
BOD: 2-2.

1384

k.ú. ŘÍKOVICE u PĚROVA

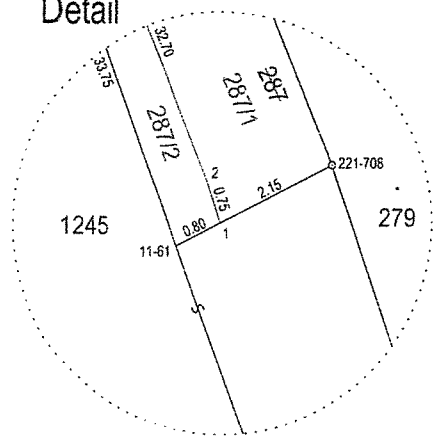
1:861



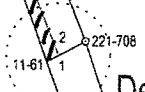


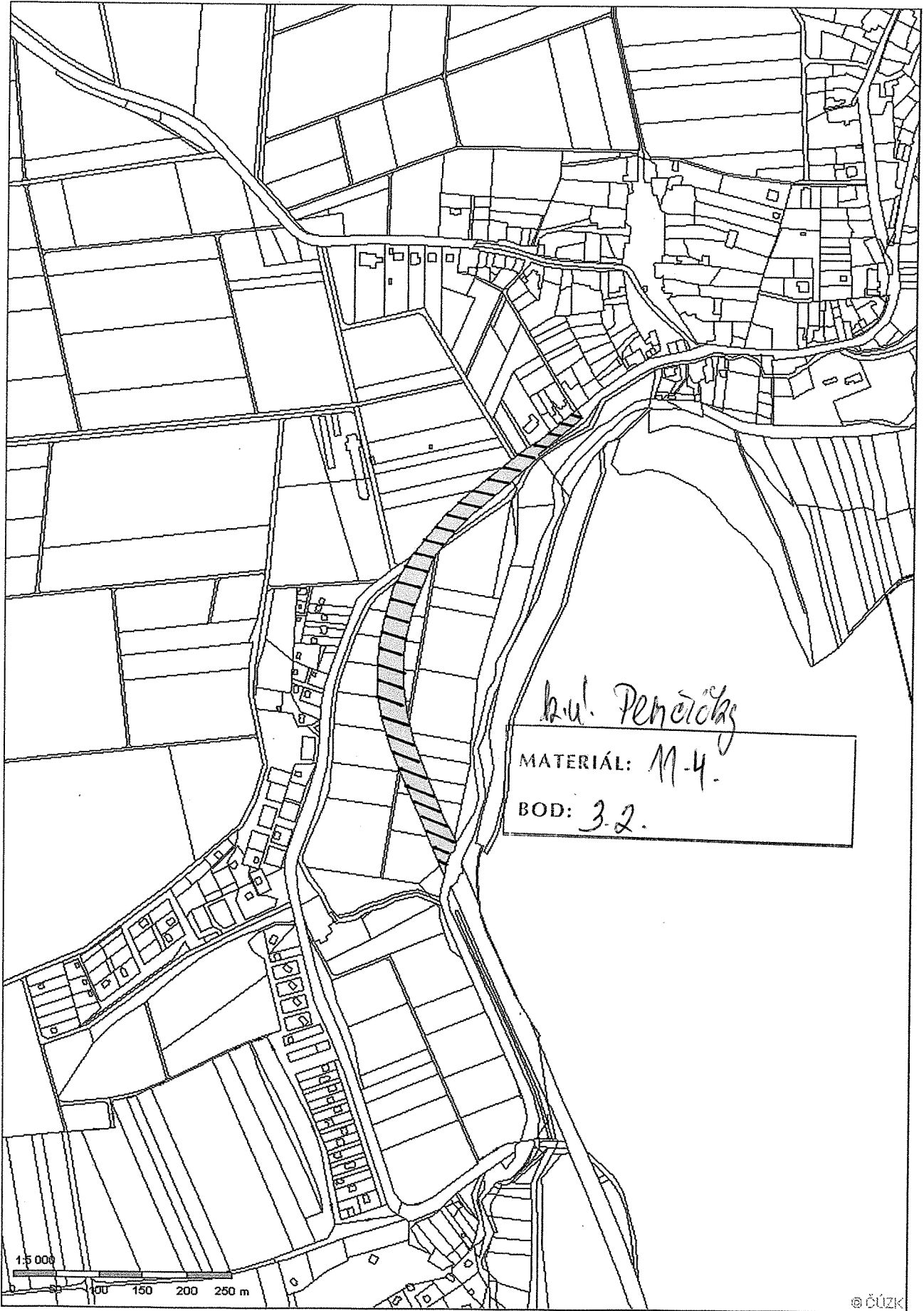
p. ul. Čekyně  
 MATERIÁL: 114.  
 BOD: 3.7.

Detail



Detail





k.u. Pehčičův  
MATERIÁL: M-4.  
BOD: 3.2.

1:5 000  
100 150 200 250 m

© ÚZK

*R. v. Uhlířov*

MATERIAL: M.4.

BOD: 3.3.

