

*K. U. S. H. V. A. V. A*  
*K. U. S. T. V. A. V. A*

MATERIAL: *10.0.*  
BOD: *A.1.*

514

2413

2423

1068/21

1068/21

1068/15

1068/14

24/3

24/2

32

33/1

5

7

6

37

33/2

4

38/6

38/2

246/5

97

96

246/4

95

1062/4  
98/5

1093/7

1068/23

1093/3

38/3

782/5

782/7

119 • 120 • 121 • 122

118

782/3

782/4

778/7

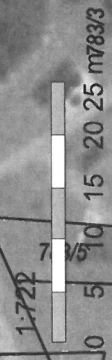
113/4

778/6

113/1

780/4

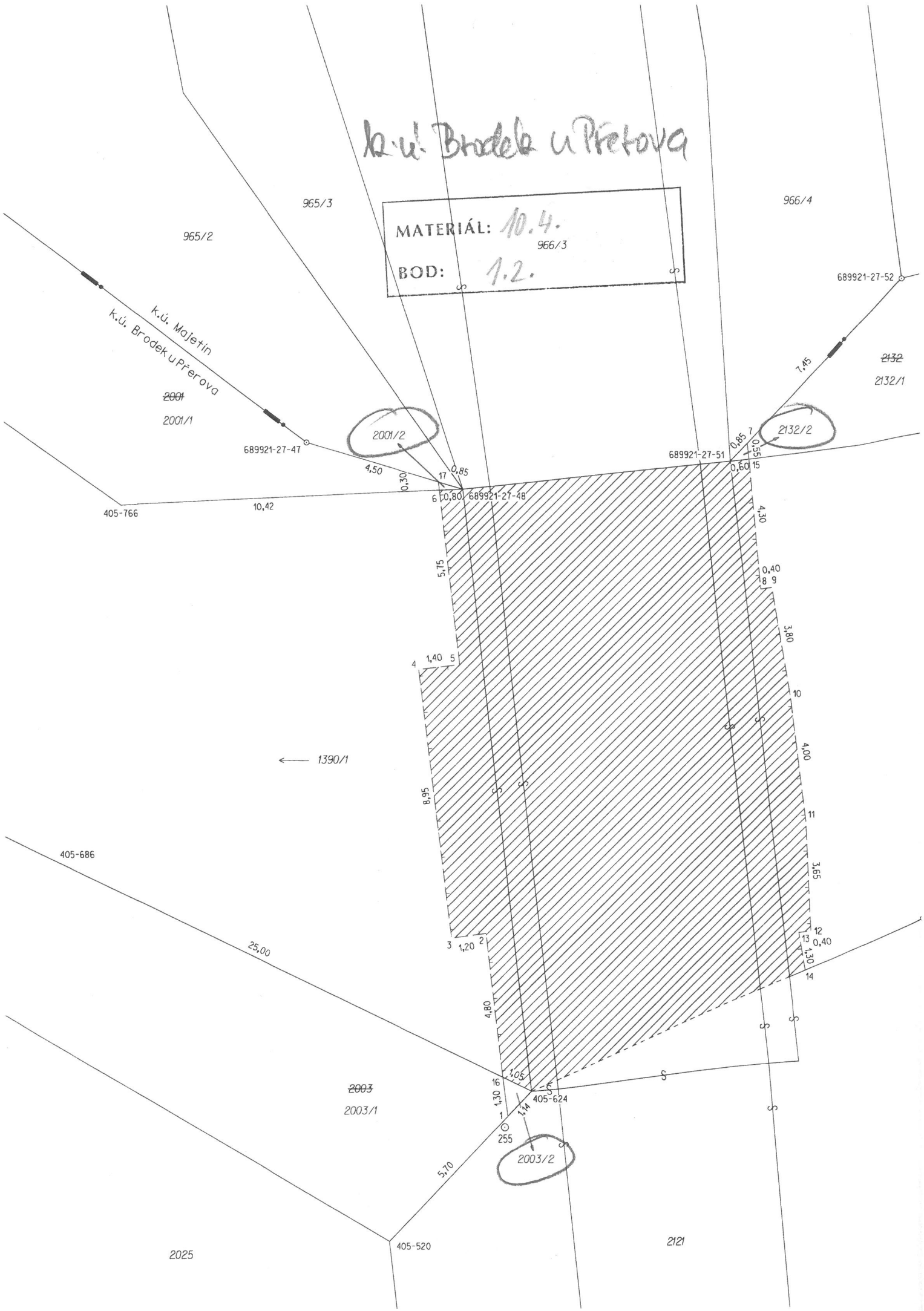
779/5



1:722

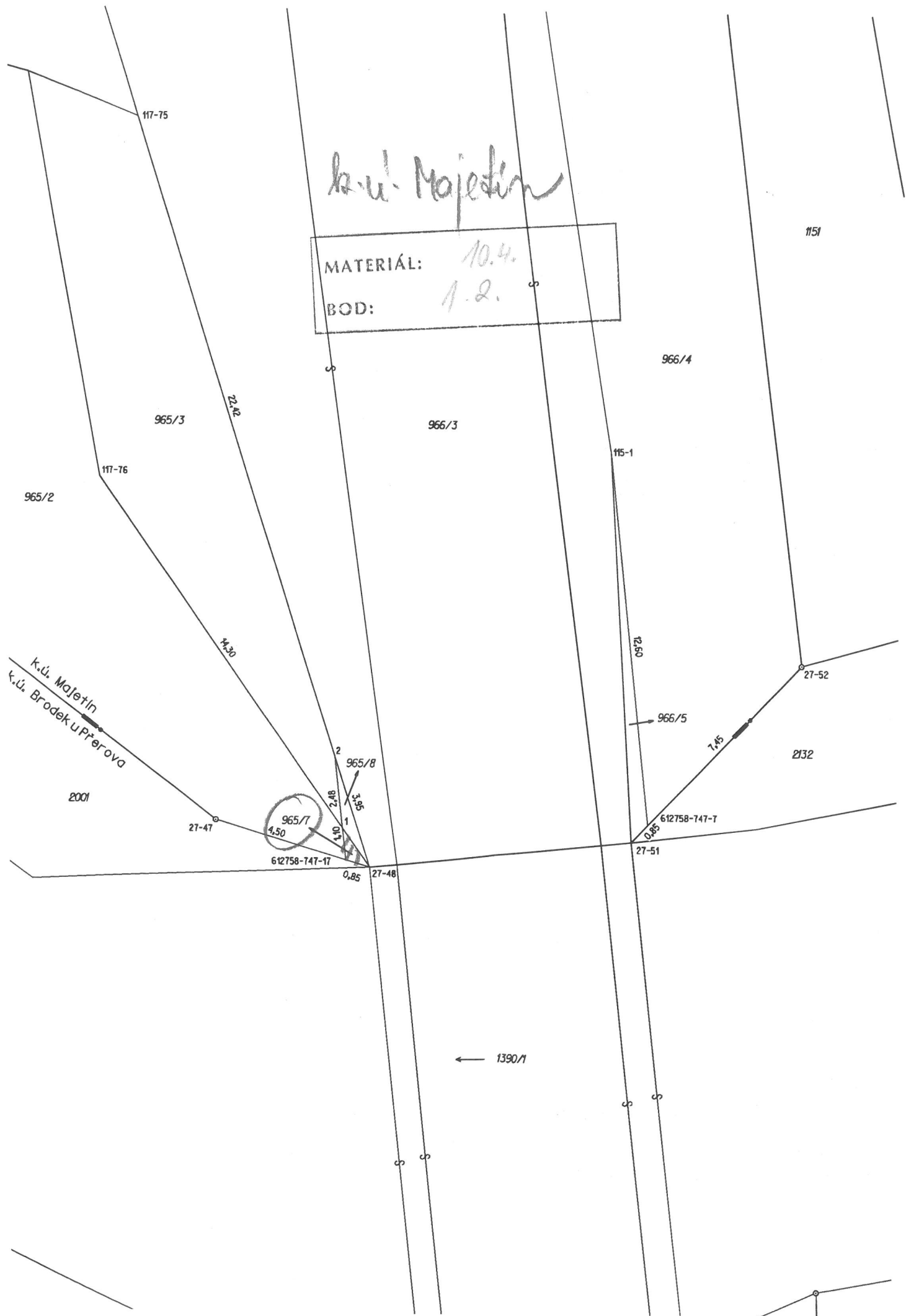
# k.ú. Brodek u Přerova

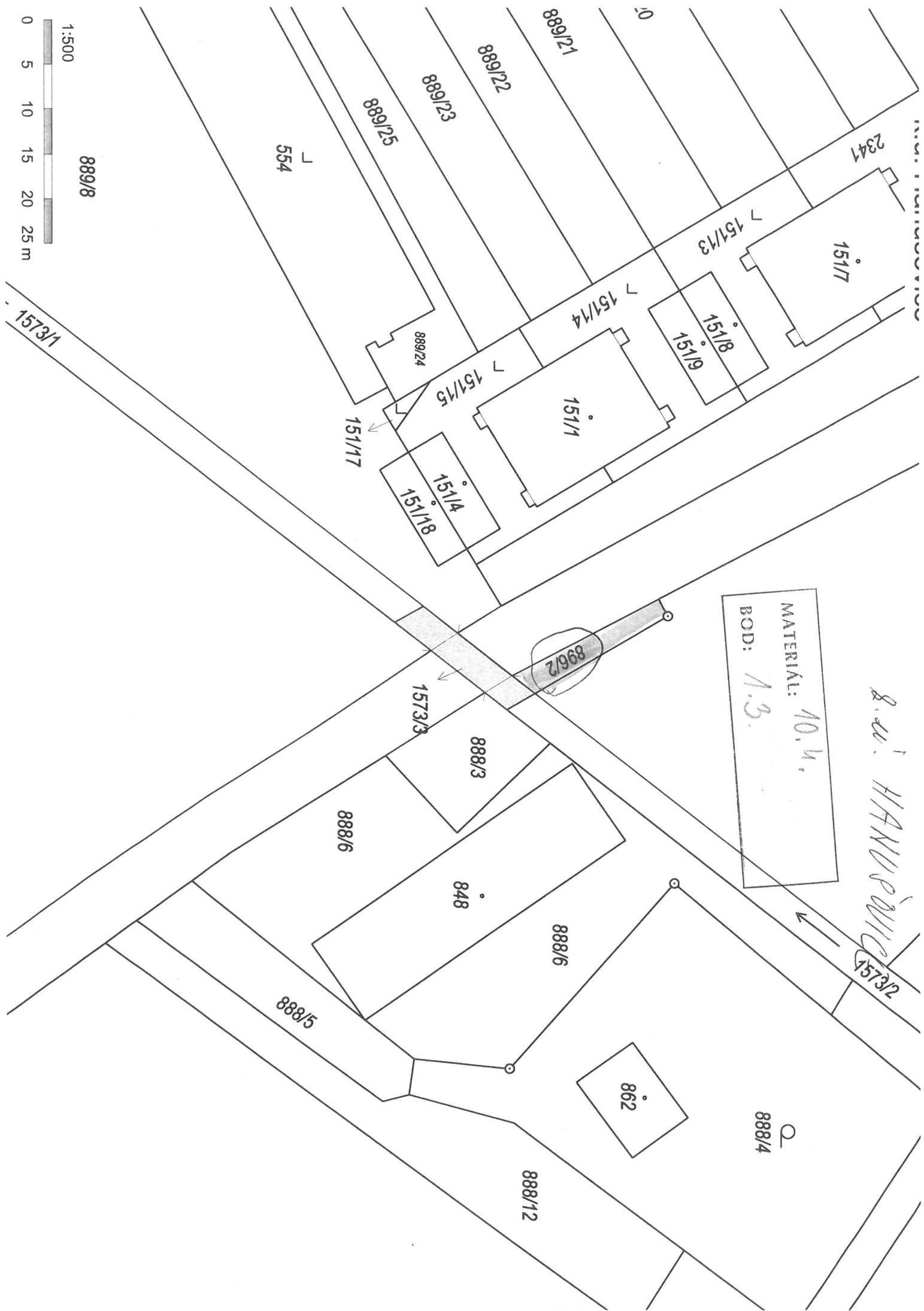
MATERIÁL: 10.4.  
BOD: 1.2.



k.ú. Majetín

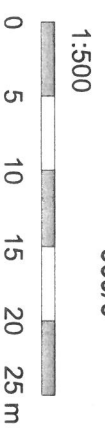
MATERIÁL: 10.4.  
BOD: 1.2.





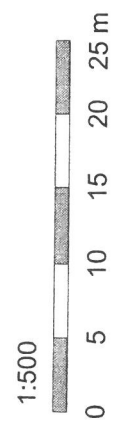
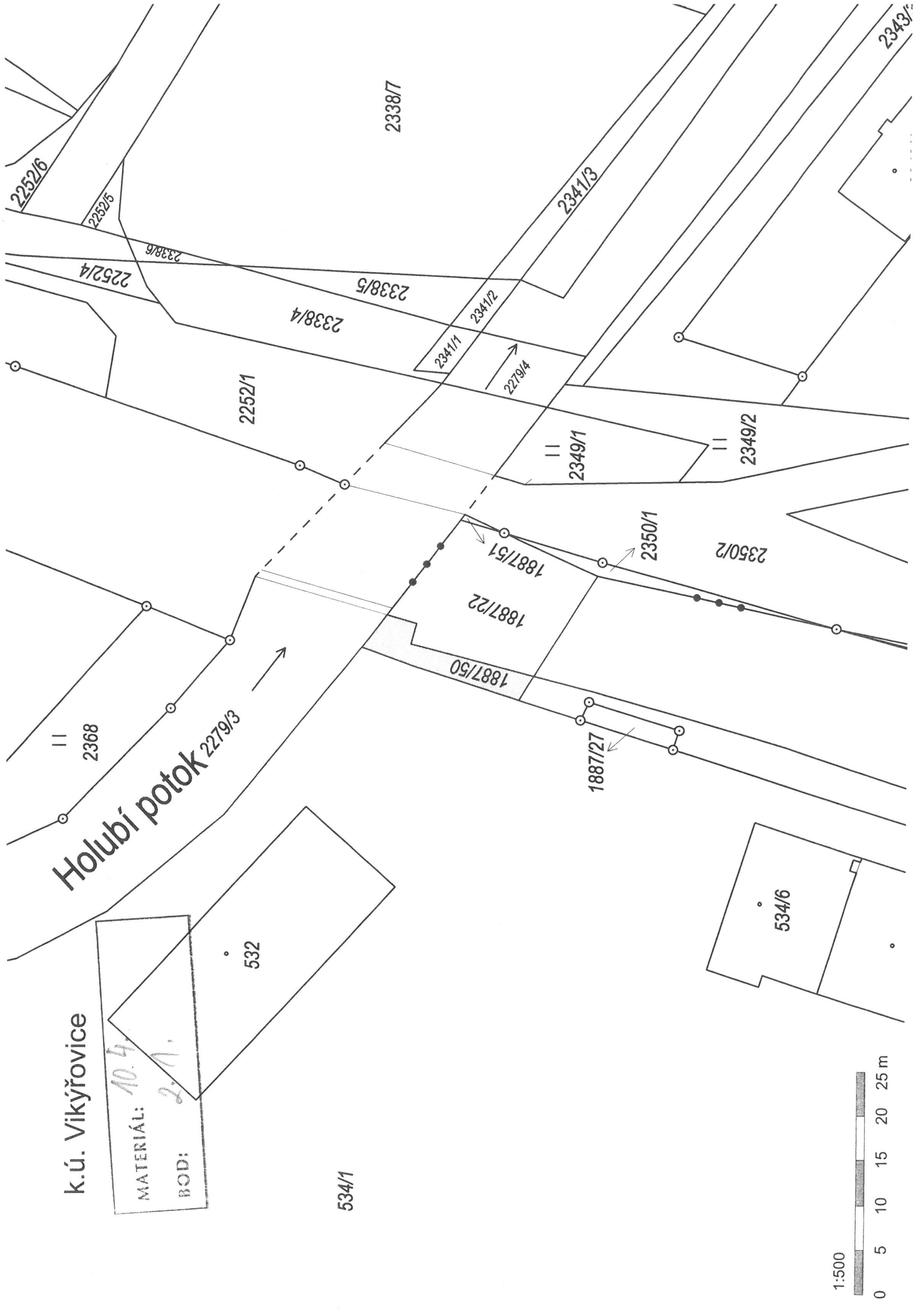
MATERIÁL: 10.4.  
BOD: 1.3.

8. u! HANNOVING



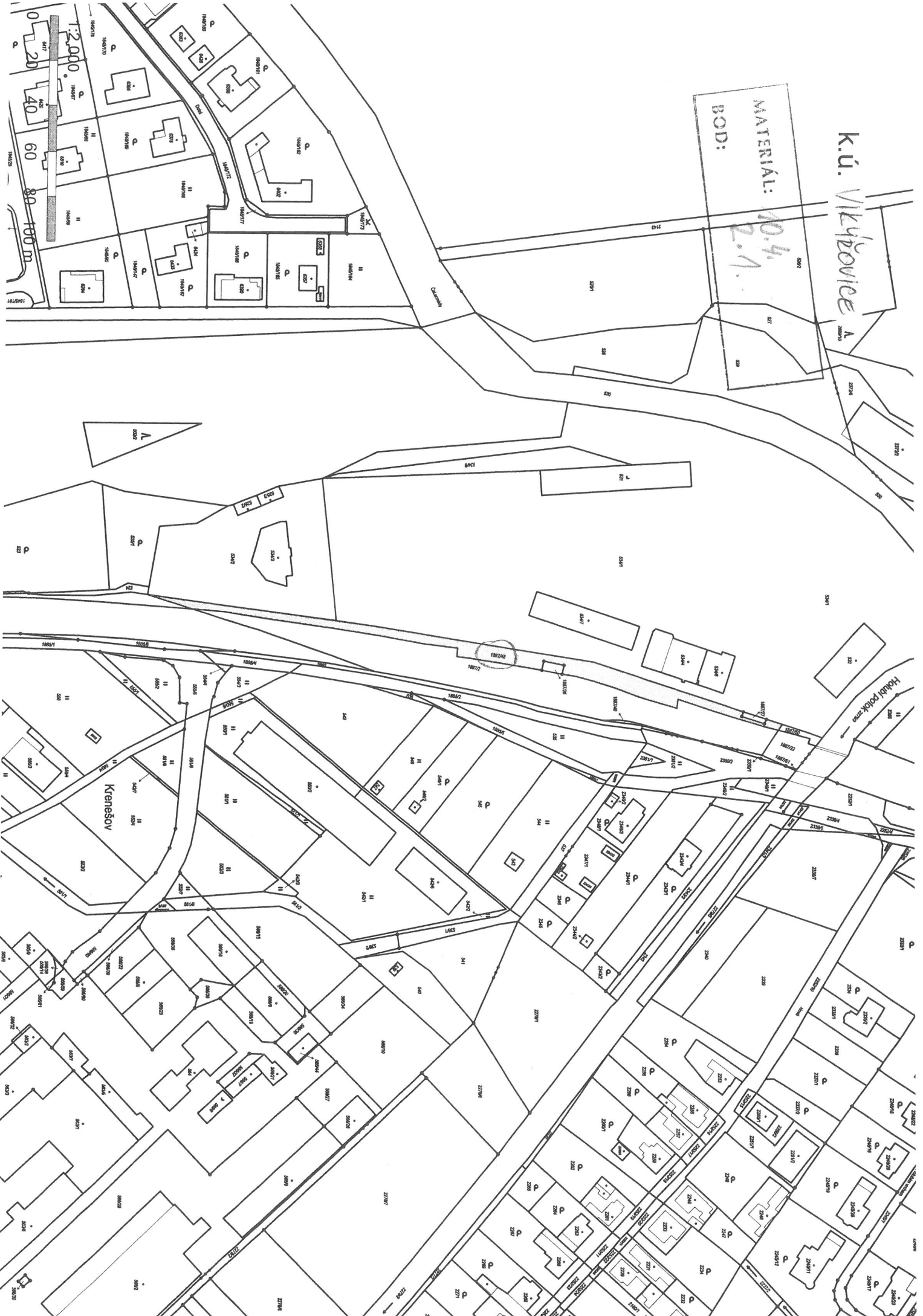
k.ú. Víkyněovice

MATERIÁL: 10.4.  
BOD: 2.A.



K.Ú. Vlkpovice A

MATERIÁL: 10.4.  
BOD: 2.1.

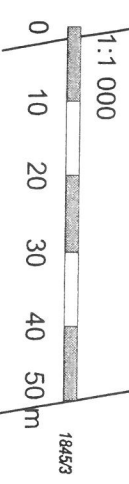


# K.ú. Vikýřovice

MATERIÁL: 10.4.

BOD: 2.1.

11  
45/11



k.ú. Víkřovice

MATEJKA  
1000

1084/44

1:4 000

0 50 100 150 200 250 m

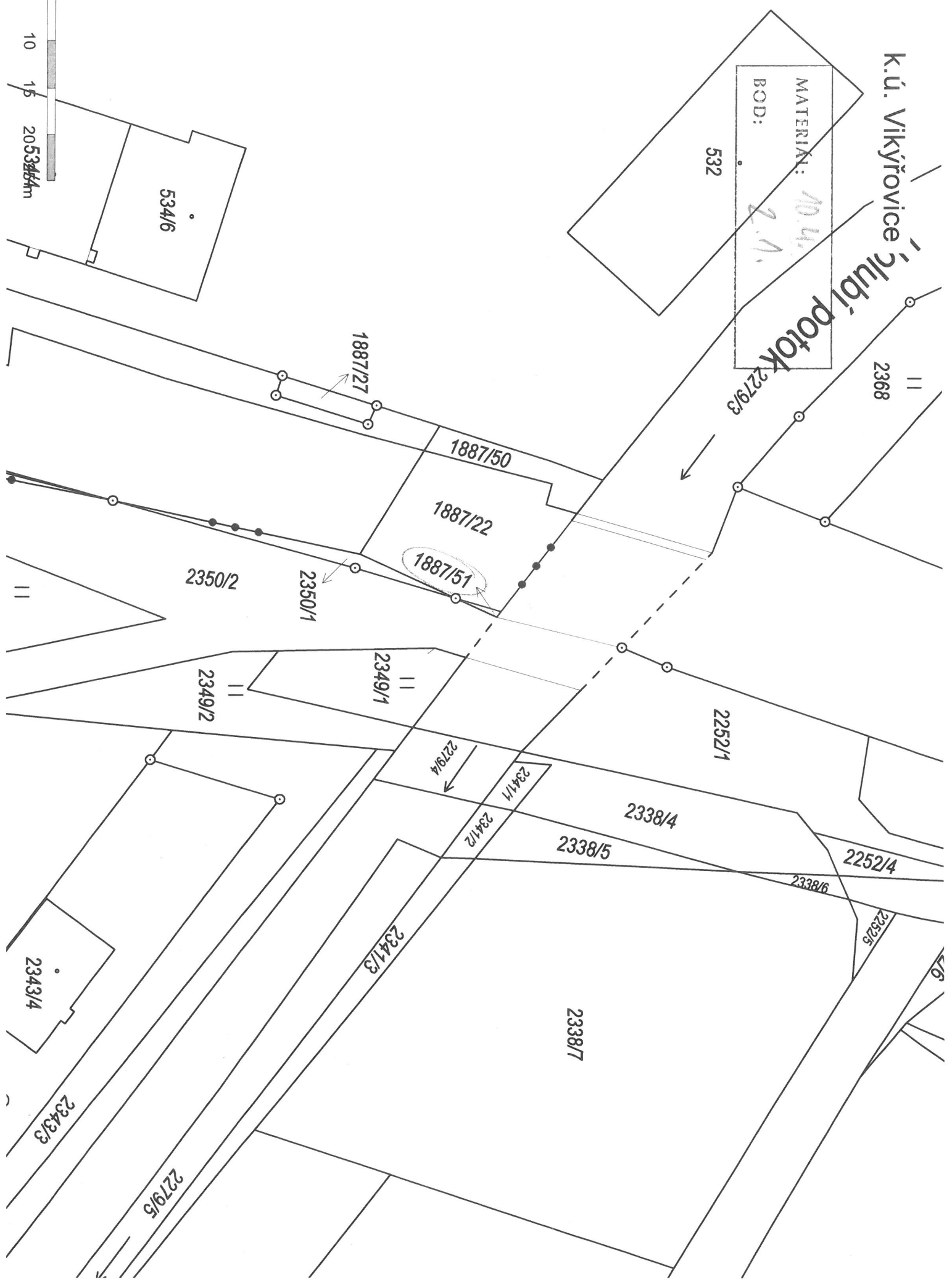
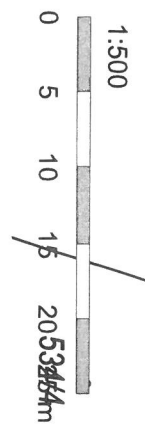




k.ú. Vítkyřovice

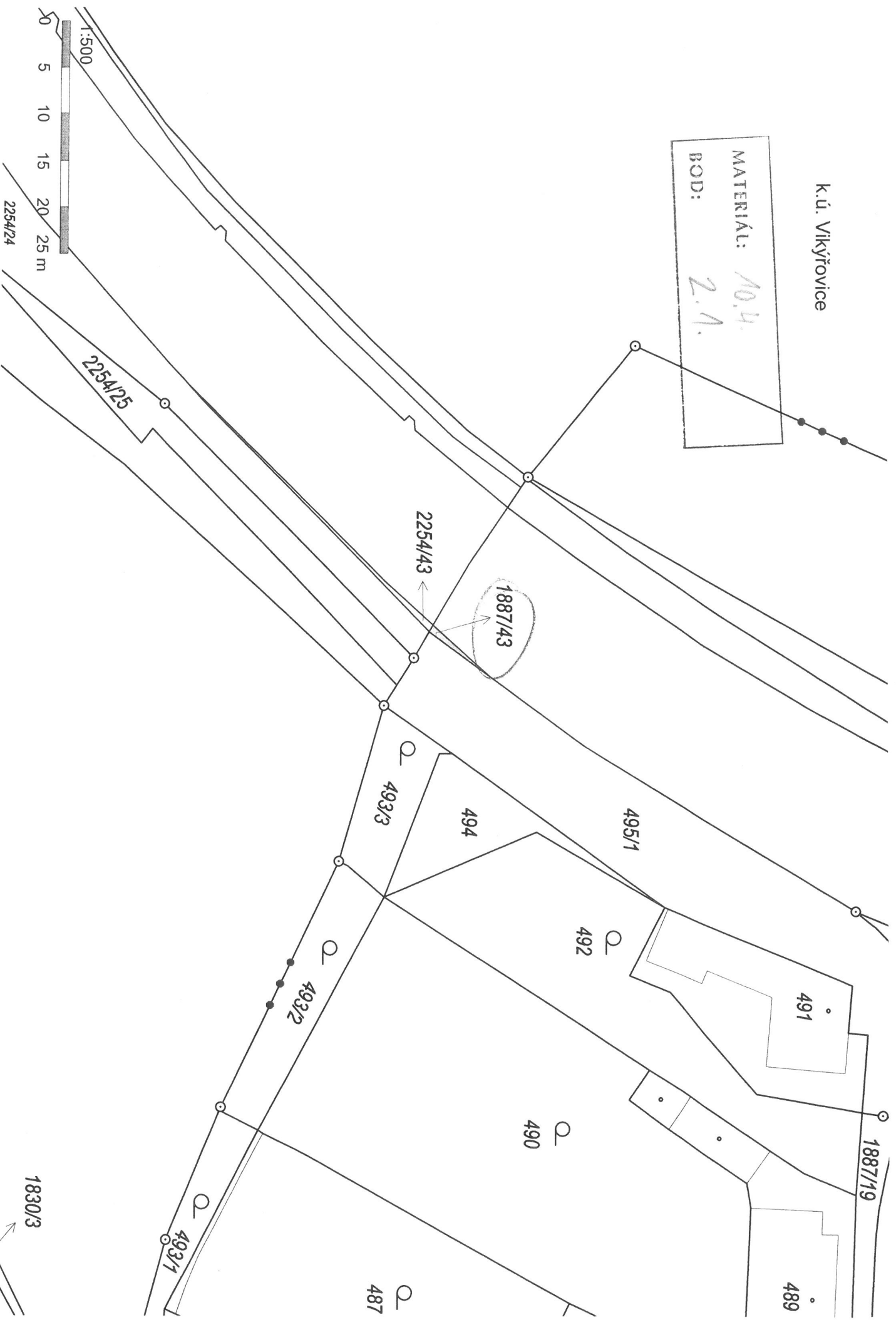
MATERIÁL: 10.4.  
BOD: 2.1.1.

hlubší potok



K.ú. Vikýřovice

MATERIÁL: 10.4.  
BOD: 2.1.



1:500

0 5 10 15 20 25 m

2254/24

2254/25

2254/43

1887/43

493/3

494

495/1

492

491

490

489

487

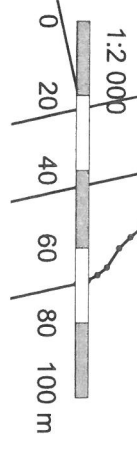
1887/19

1830/3



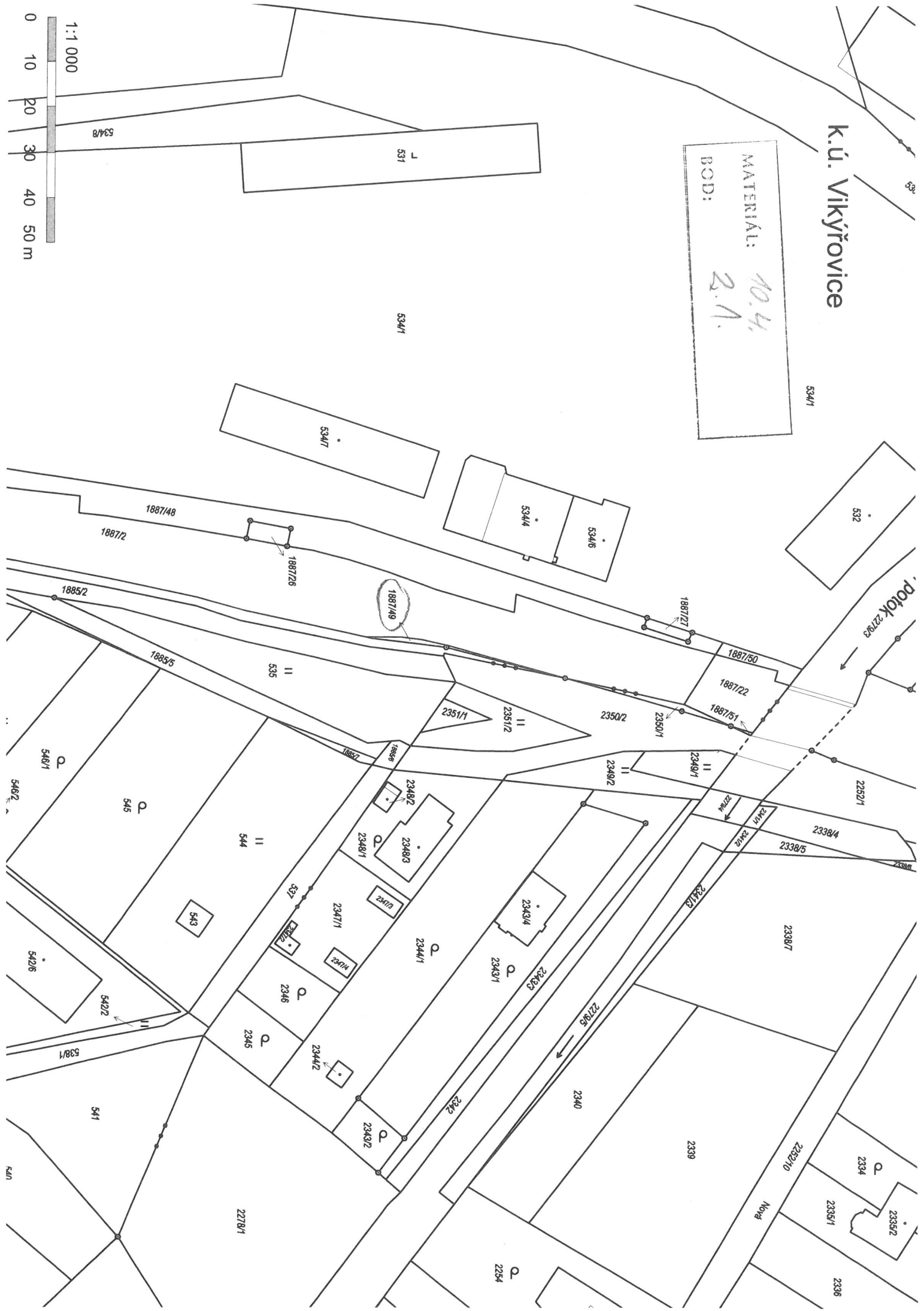
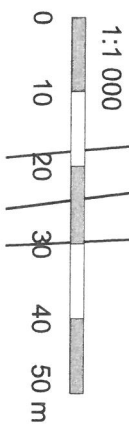
# K.ú. Vlkýřovice

2



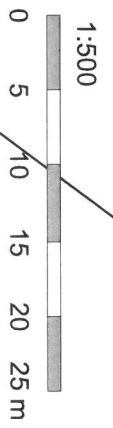
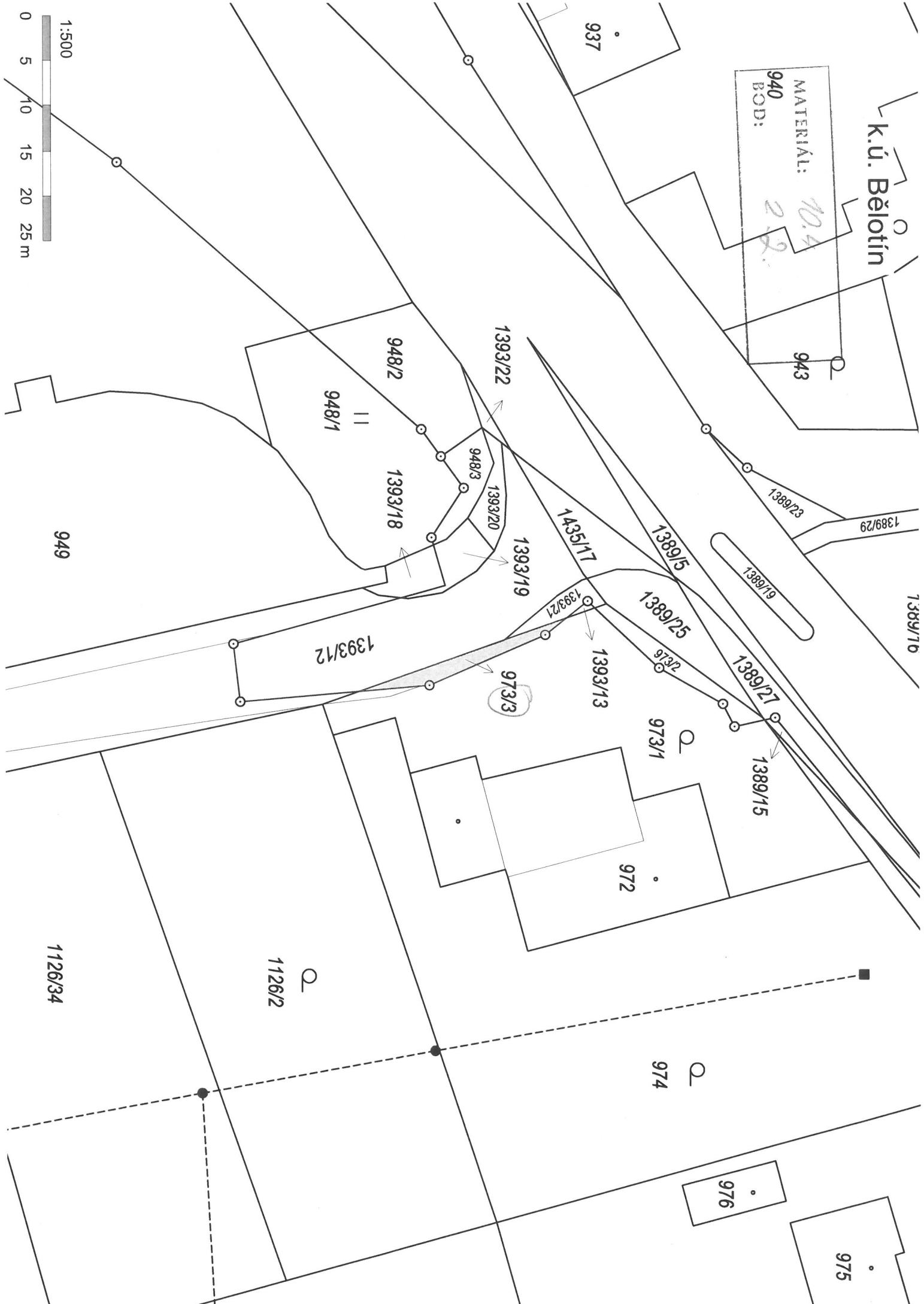
# K.ú. Vítkyřovice

MATERIÁL:  
10.4.  
2.1.  
BOD:



K.ú. Bétotín

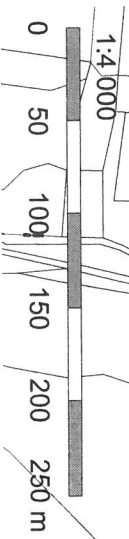
MATERIÁL: 10.4  
BOD: 0.2.

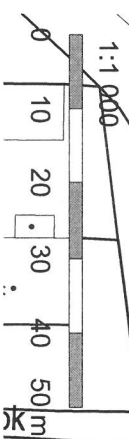


K.ú. Kozov

MATERIÁL: 10.4.  
BOD: 23

→ 10.4.1







2232/139  
22 k.ú. Velká Bystřice

MATERIÁL: 10.4.  
BOD: 2.4.

2232/150

2232/295

2232/140

2232/155

2232/161

2232/135

2232/151

2232/141

2232/132

2232/136

2232/153

2232/142

2232/143

2232/137

2232/138

2141/4

2232/134

2141/3

2141/2

1:500

