

k.ú. Kostelec na Hané

MATERIÁL: *AD. V. 1.*

POD: *11. 1. 2.*

1158

1156/2

1155/4

1154/3

1156/3

1155/3

1154/2

1153/2

2771/28 2771/40

2771/2

1344/2

1151

1150

1149

1143

1142

1141

1138

1137

1134

1133

1155/2

2771/4

1344/1

2771/5 2771/2

Za Branou

1345

1190

1193

1194

1188/1

1177

1180

1181

1182

1183

1184

1185

1186

1189

1190

1193

1194

1:500

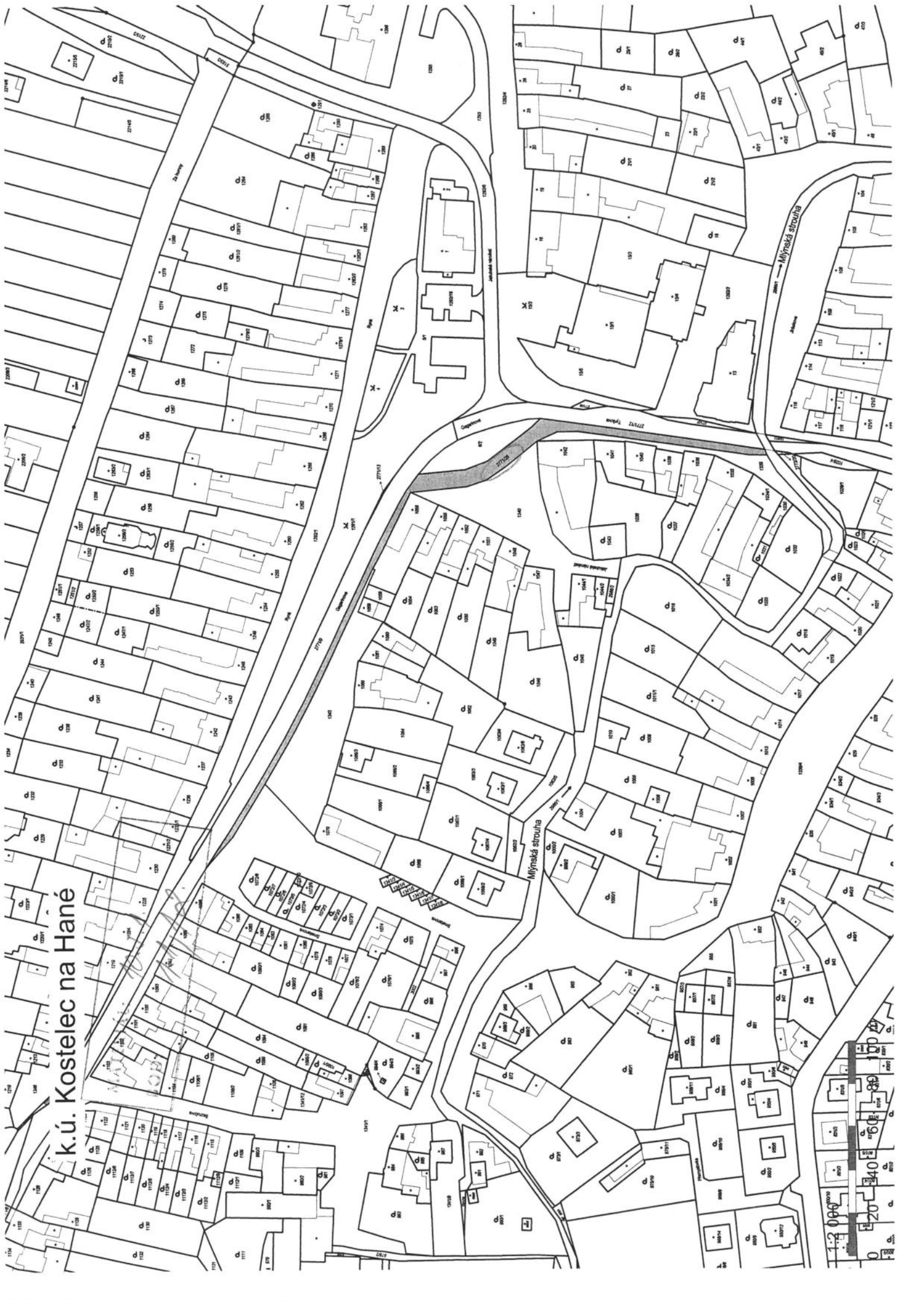


k.ú. Kostelec na Hané



AGENCIÁ: D.J. F.
BOD: A.A./A.R.

k.ú. Kostelec na Hané



k.ú. Kostelec na Hané

MAKABERÁ: *AD. J. A.*
KOD: *A. 1. 1. 2.*

15/5

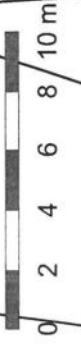
15/1

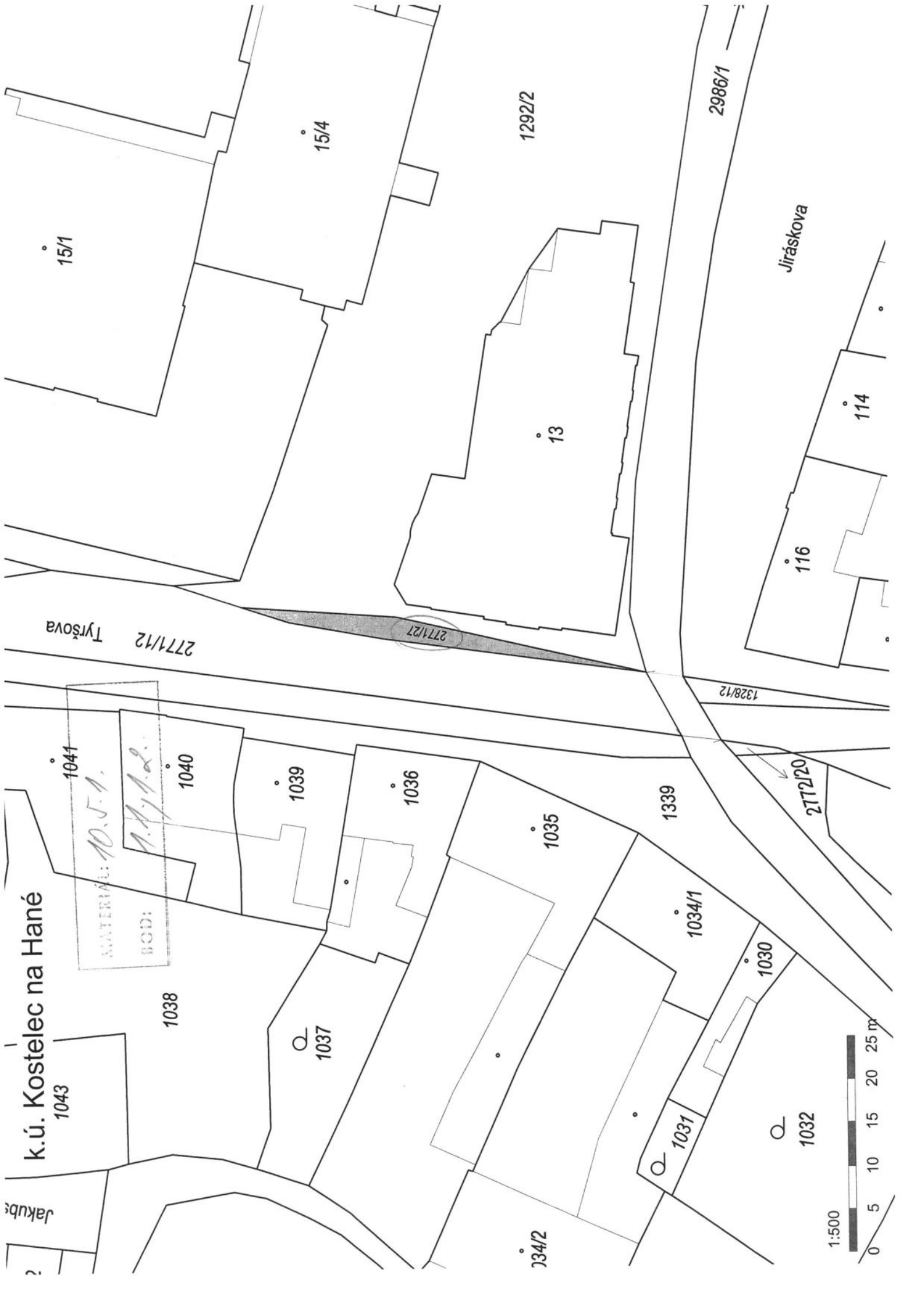
2771/26

TYŘOVA

2771/12

1:250





k.ú. Kostelec na Hané

1035

13

Jiráskova

1339

1328/12

2772/20

1028/4

MATERIÁL: A.J.A.
BOB: A.A.P.P.

1033

1031

1034/1

1030

1032

1022

1028/1

1023

1026

1021

1024

1025

1028/2

1338/5

117

118

116

114

113

109

121/1

121/2

123

122

124

125

Bezručova

1:500



KOSTELEC NA HANÉ

Kladi listů

1

2

3

4

5

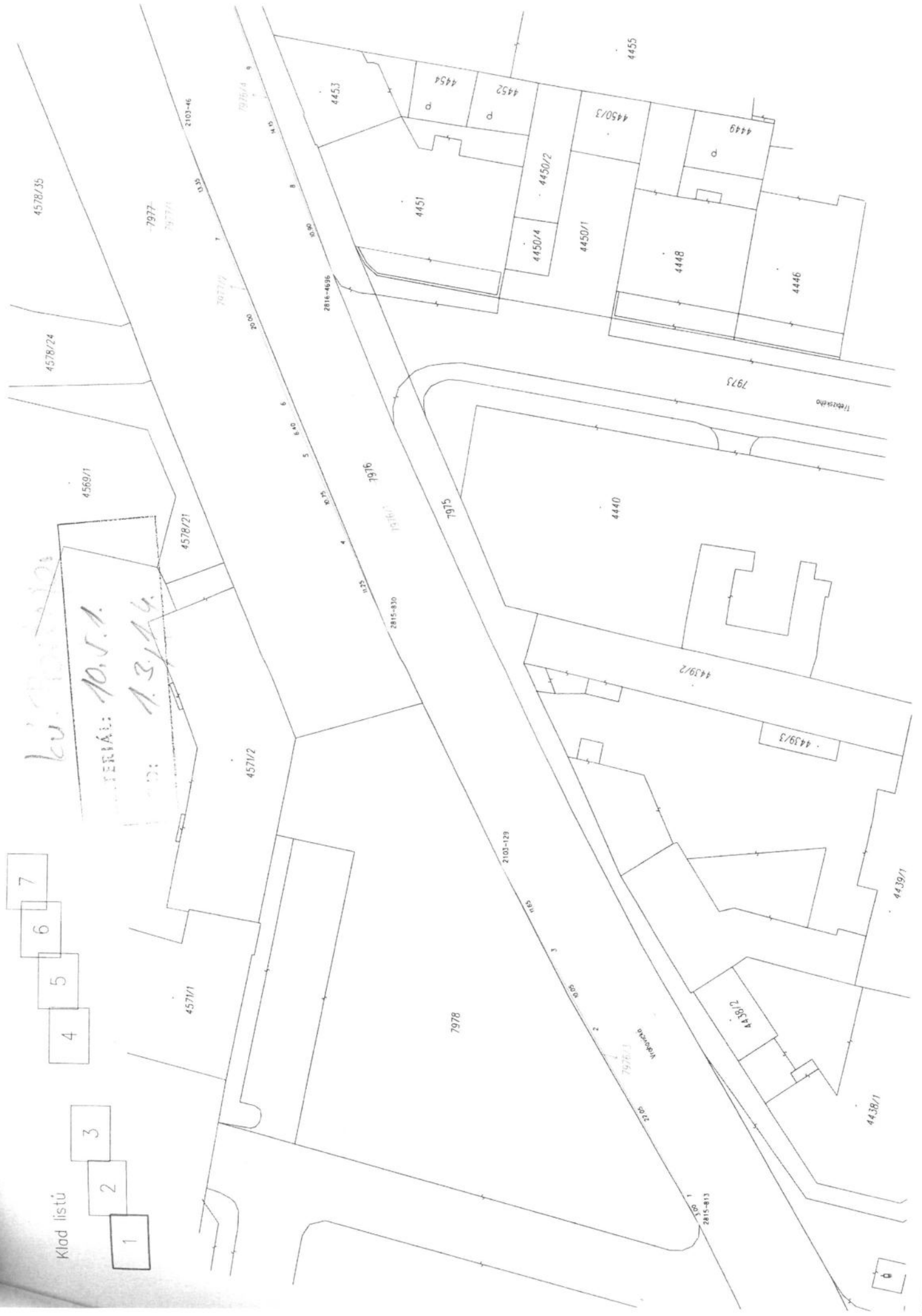
6

7

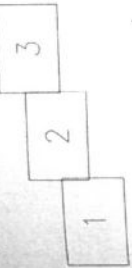
kv. 7978/1

SERIA: 10. J. 1.

D: 1.3.14.4.



Klady listů



4547/2
MATERIÁL: *10. P. 1.*
BOD: *1.3, 1.4.*



E.V. Proštor

MATERIÁL: 10.5.1.
 HOD: 1.3.1.4.

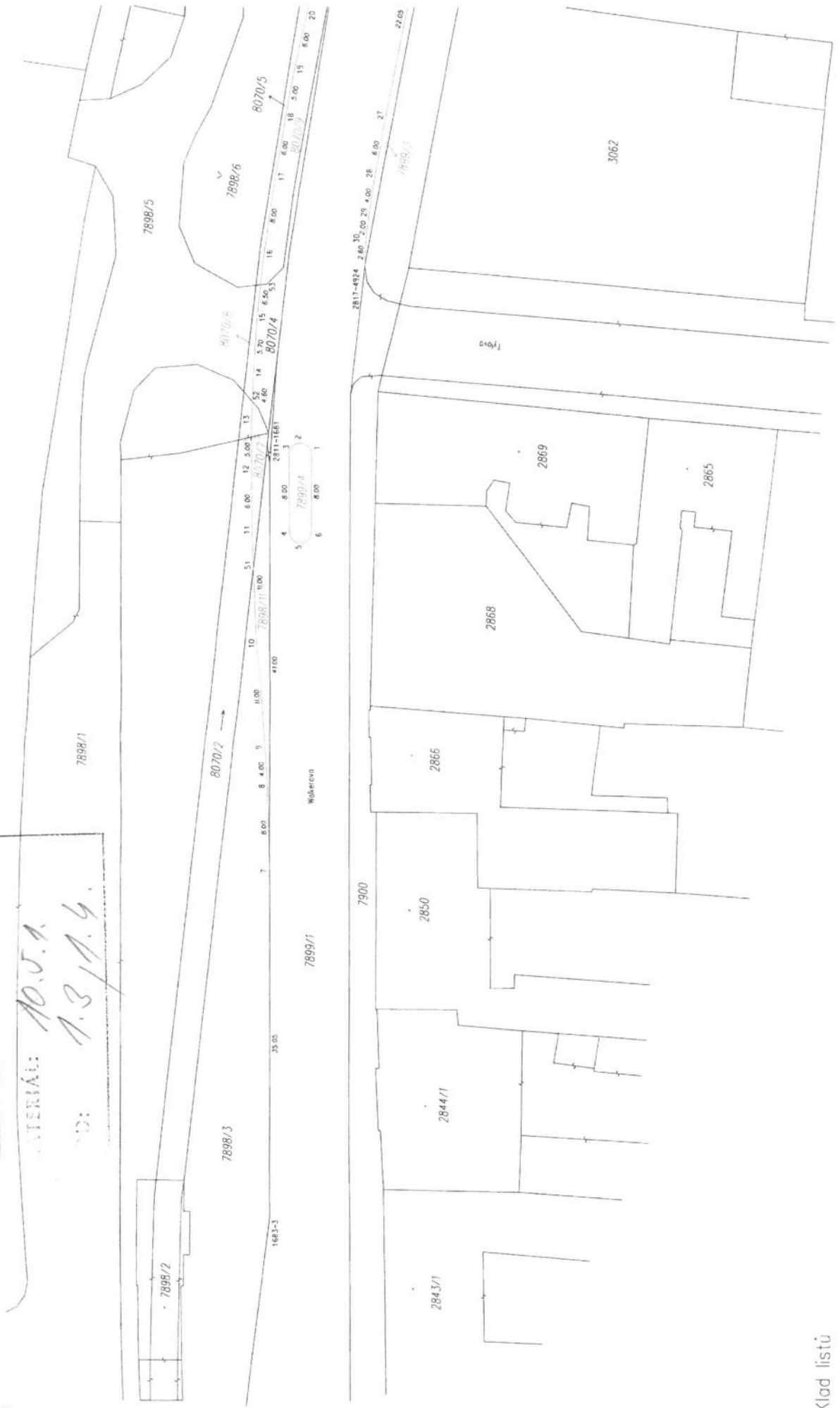


Kladi listu

- 1
- 2
- 3
- 4
- 5
- 6
- 7

L.V. PROSJEKTOV

MATERIAŁ: A.O.S.A.
D: A.3/A.4.



Klad listů

- 1
- 2
- 3

K. V. POOSTEJON
 MATERIAL: 10.5.1.
 TUB: 1.2.1.4.



Klad listů

- 1
- 2
- 3

k.ú. PROSTĚŠOV

MATERIAL: 10.J.1.
BOD: 1.3, 1.4



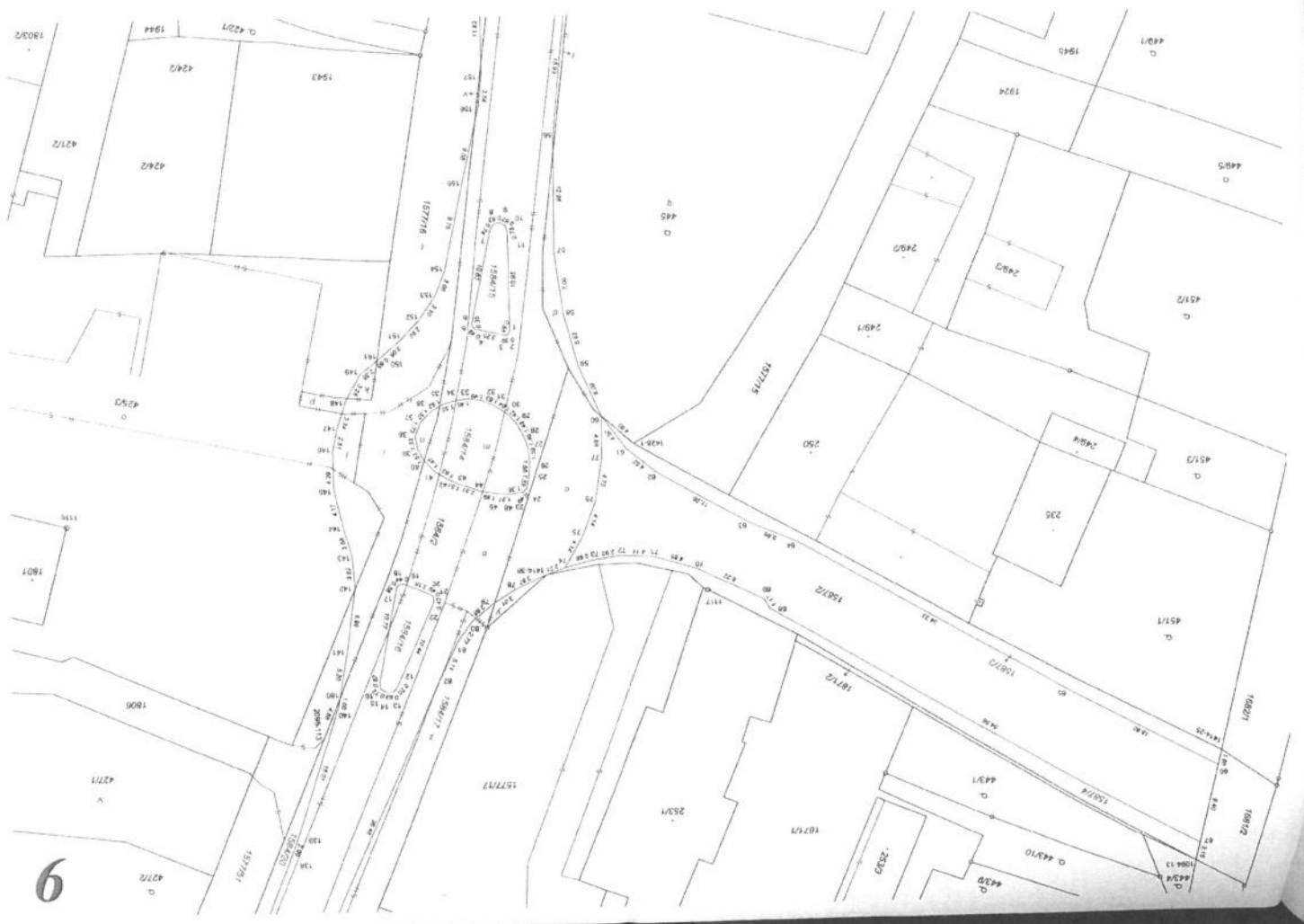
Klad listů
1 2 3



10

1000
 1001
 1002
 1003
 1004
 1005
 1006
 1007
 1008
 1009
 1010
 1011
 1012
 1013
 1014
 1015
 1016
 1017
 1018
 1019
 1020
 1021
 1022
 1023
 1024
 1025
 1026
 1027
 1028
 1029
 1030
 1031
 1032
 1033
 1034
 1035
 1036
 1037
 1038
 1039
 1040
 1041
 1042
 1043
 1044
 1045
 1046
 1047
 1048
 1049
 1050

L. W. Kitchell
 No. 5. A.
 1. 5. 1. 6.



By: *K. K. K.*
 APPROVED: *M. J. A.*
 DATE: *11.16.*



8

DATE: 10.5.11
 BY: A.S. 1.6.
 PROJECT:

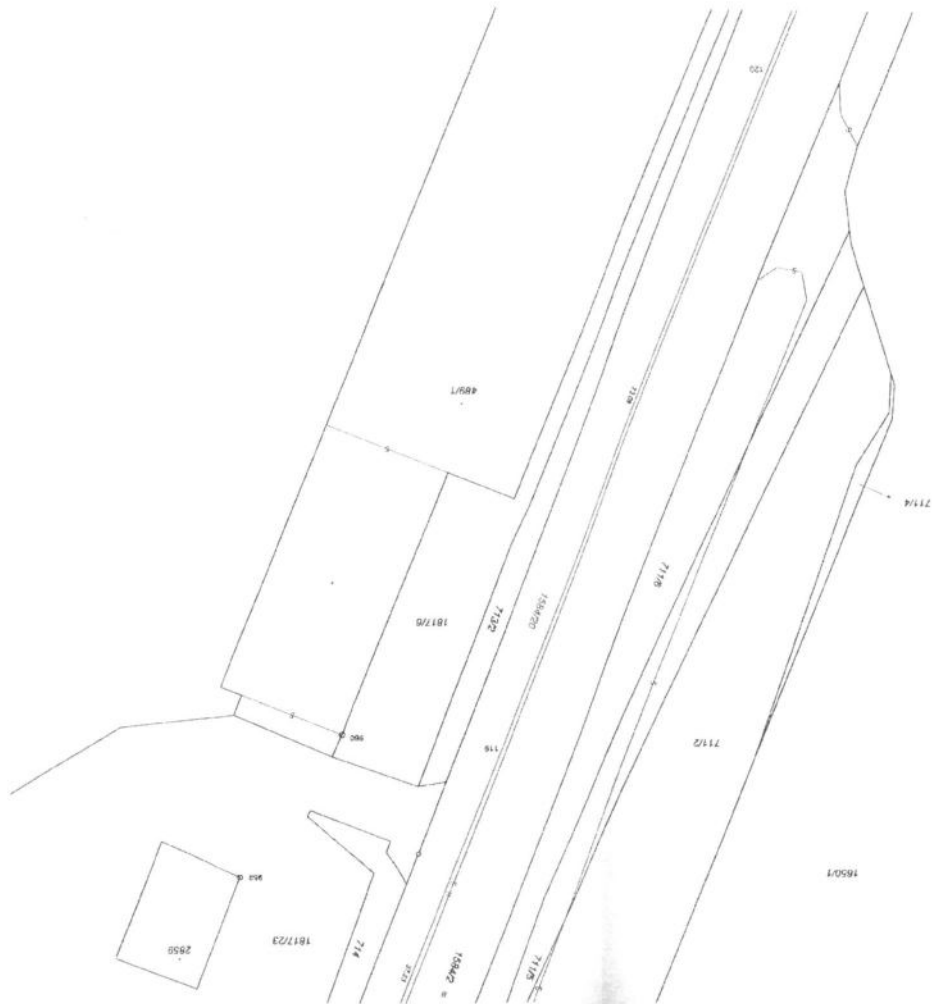
E.V. Richards



WATERWAY: N.O.S.N.
 A.I. R.G.
 E.V. Rittenrod



K.V. - LITON
 MATERIALS: A.S.I.
 BOD: N.J. K.G.



3

MATERIALS: NO. 5.1.
 NO. 5.1A.6.

by Lindt



L'U. CHOTTE
 MATRIKAL: K.D.J. 1.
 100: A.S. 1. K.G.

