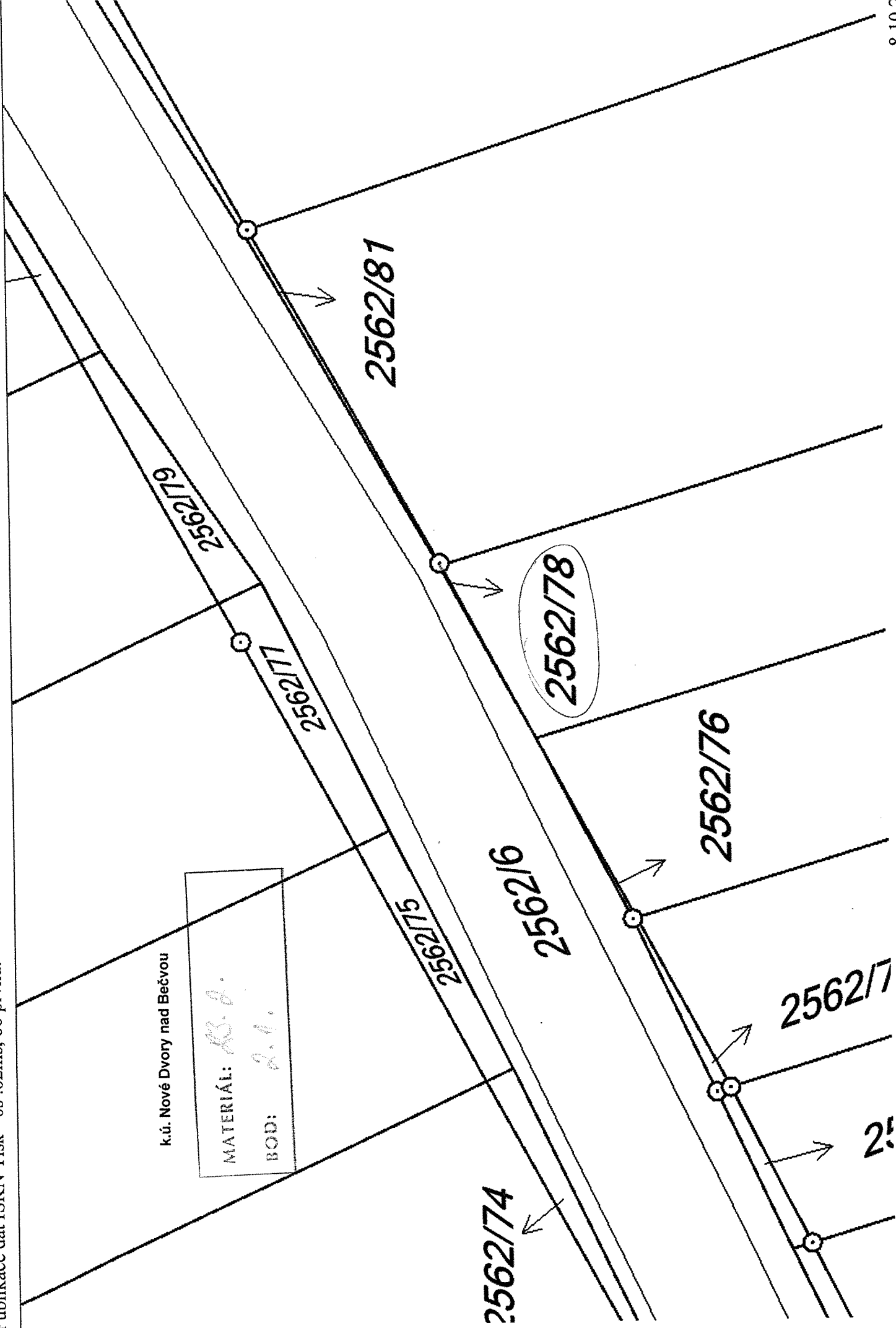


k.ú. Nové Dvory nad Bečvou

MATERIÁL:	<i>KB. B.</i>
BOD:	<i>2.1.</i>



ku. Luka

MATERIAL: 23.2.0  
123/1

BOD: 2.2, 3.3.

0  
123/3

899/12

0  
122/1

20/1

20/3

20/2

123/2

129 5.60

169 5.70

13.20

190

195

957

951/1

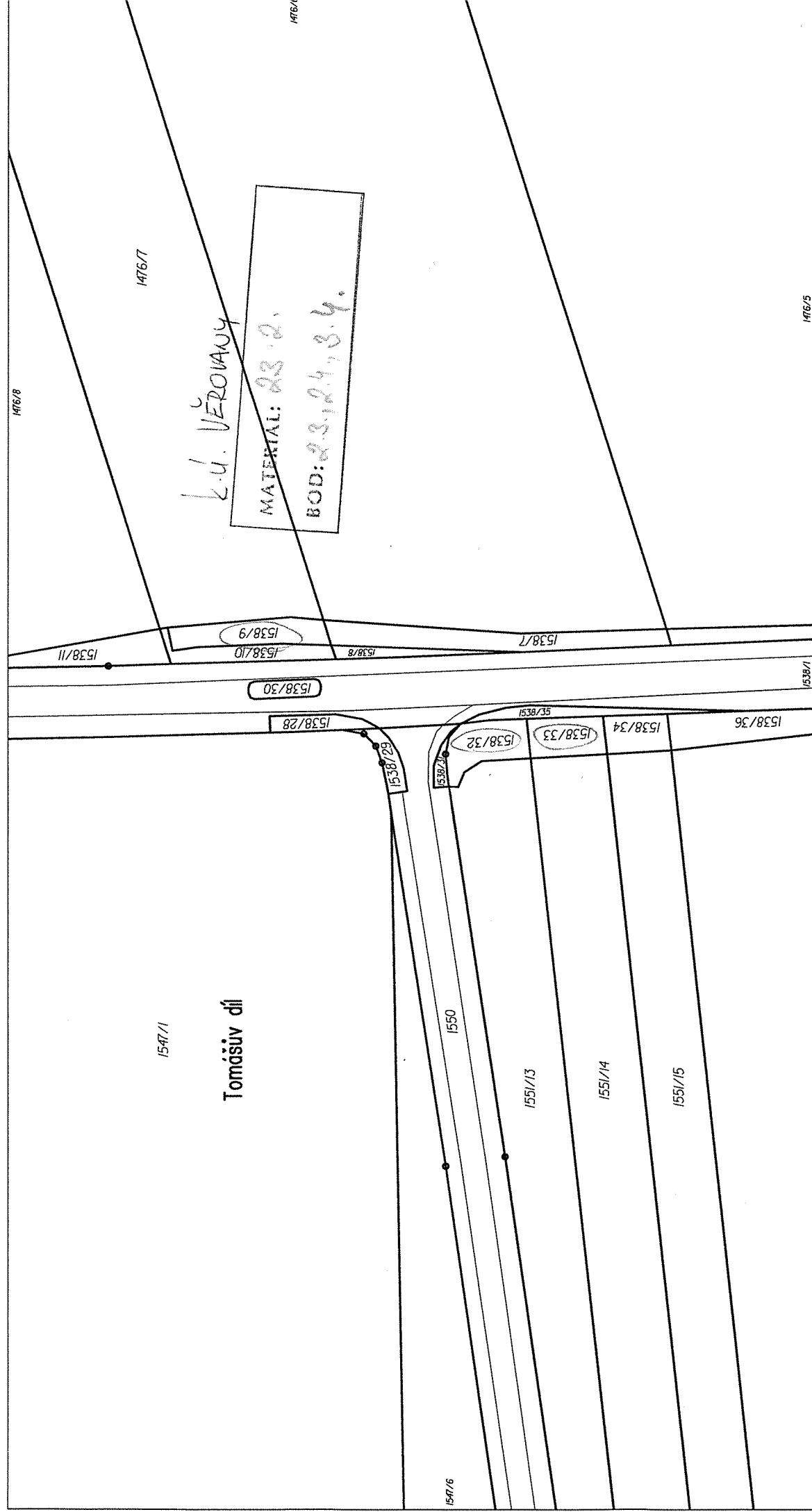
920/1

22/1

22/2

95

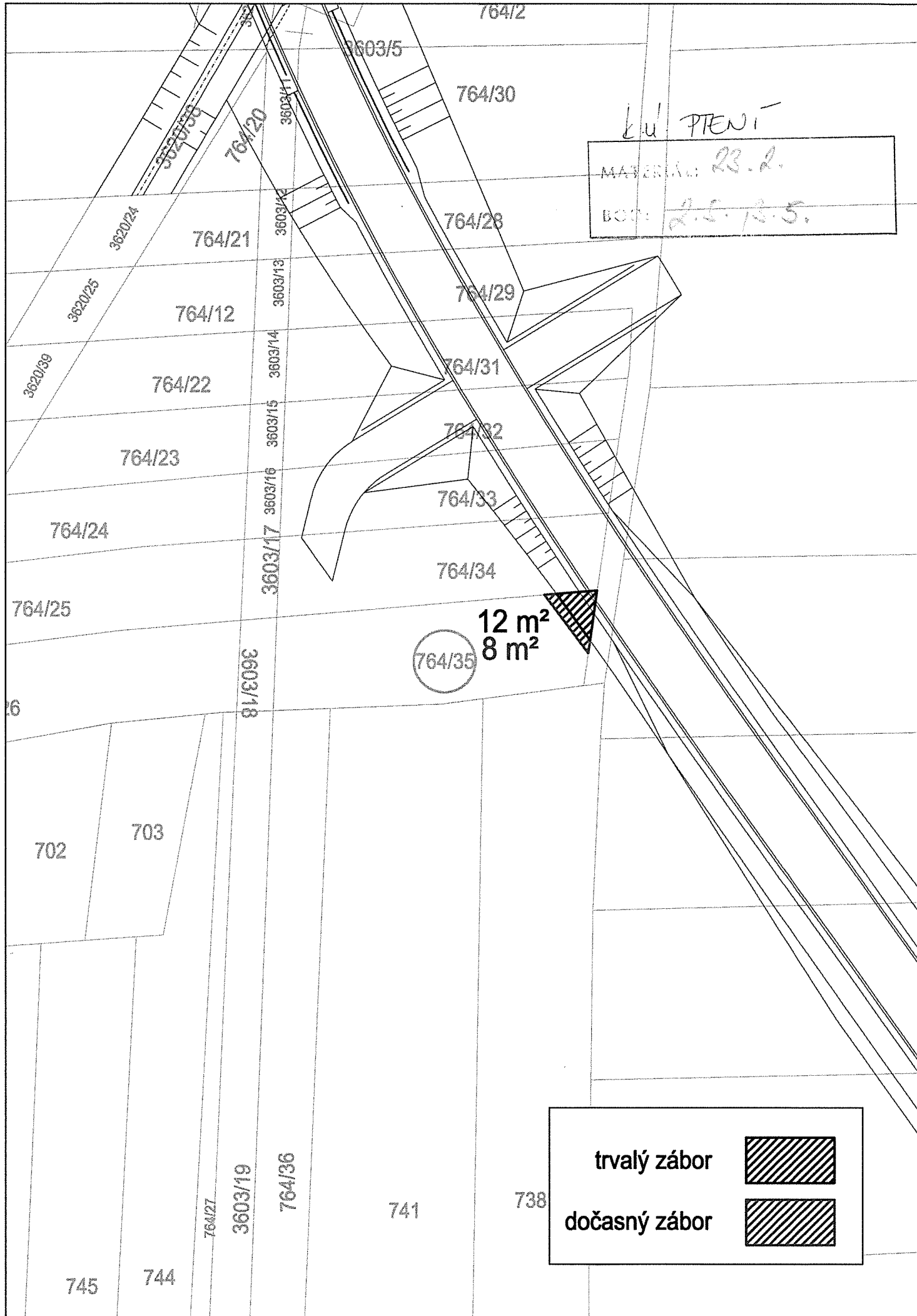
23/1



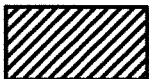

k.ú. VĚROVANY  
 MATERIÁL: 23.2.  
 BOD: 23,24,34.

Katastrální úřad pro Olomoucký kraj, Katastrální pracoviště Olomouc	Okres Olomouc	Obec Věrovany	1476/5	Podpis Číslo Razítko
Kat. území Věrovany	Mapový list č. OLOMOUC 8-8/34	Měřítko platné pro rám 190 x 277 mm 1:10000		
<b>KOPIE KATASTRÁLNÍ MAPY</b>				
Stav k 25.06.2015 07:15:02	Vyhotovil Vyhотовeno dálkovým přístupem 25.06.2015 07:28:29	Dne		

1551/17



k u PŤENÍ  
 MAVERIA: 23.2.  
 BOB: 2.5. / 3.5.

trvalý zábor   
 dočasný zábor 

764/35

12 m<sup>2</sup>  
 8 m<sup>2</sup>

1443/5

1286/106

498

*L.ú. PLEVI*

*POSLEDNÍ: 23.2.*

*BOD: 2.6.13.6.*

1286/105

1286/29

1286/104

1286/83

1286/26

498/5

440/8

05.1

1286/24

498/2

**455 m<sup>2</sup>  
24 m<sup>2</sup>**

424

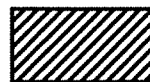
1286/22

1286/20

1286/81

1286/13

trvalý zábor



dočasný zábor



1286/96

1286

k.ú. Konice

MATERIAL: 23.2.  
BOD: 2.4.13.8.

4699

4698

4697

4696

4693

4694

4692

312

1578/18

1577

337

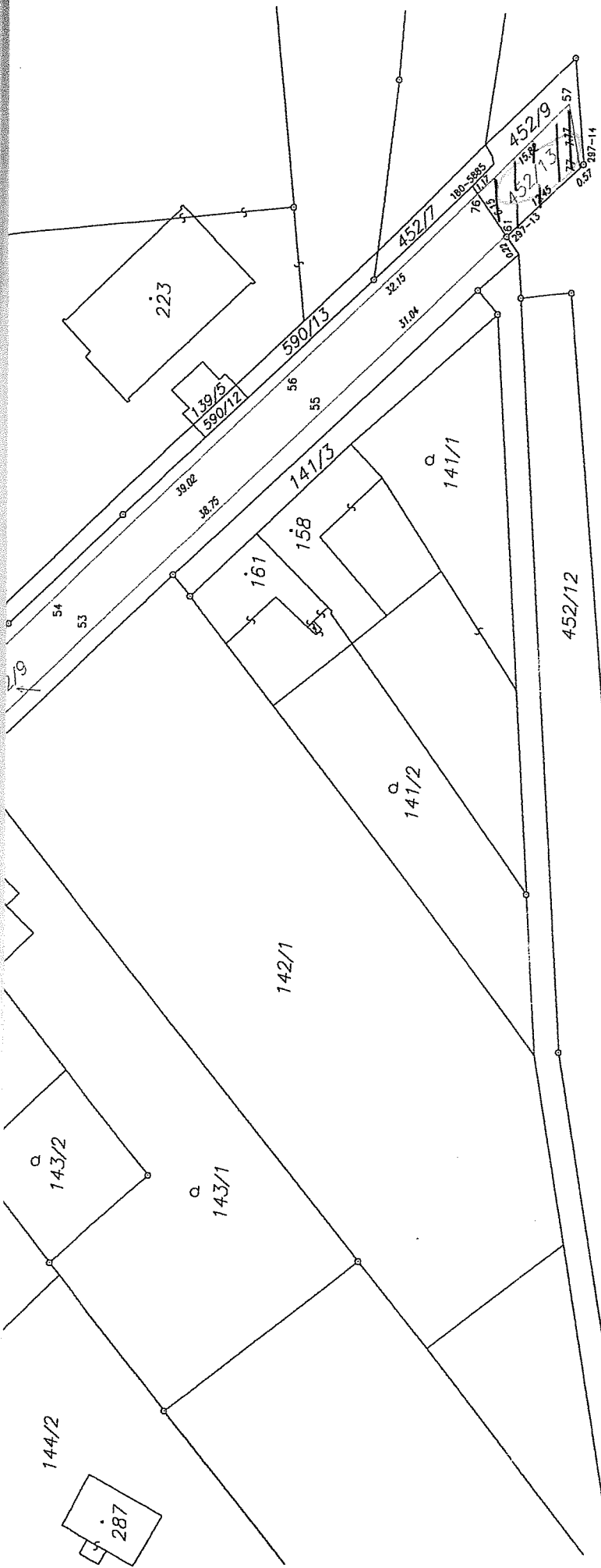
1:500



4716

4714

4713/14



MATERIÁL: 23.2.  
 BOD: 3.9.

K.u. Blatec

452/8

447/63

495/6

447/55

329-1494

K.V. POLICE

MATERIÁL: 23.2.  
BOD: 3.40.

218/1

2.27

203

329-1514

218/2

221/1

218/3

481/1

95.47

23

329-1675

20.44

217/1

204

9.98

205

8.64

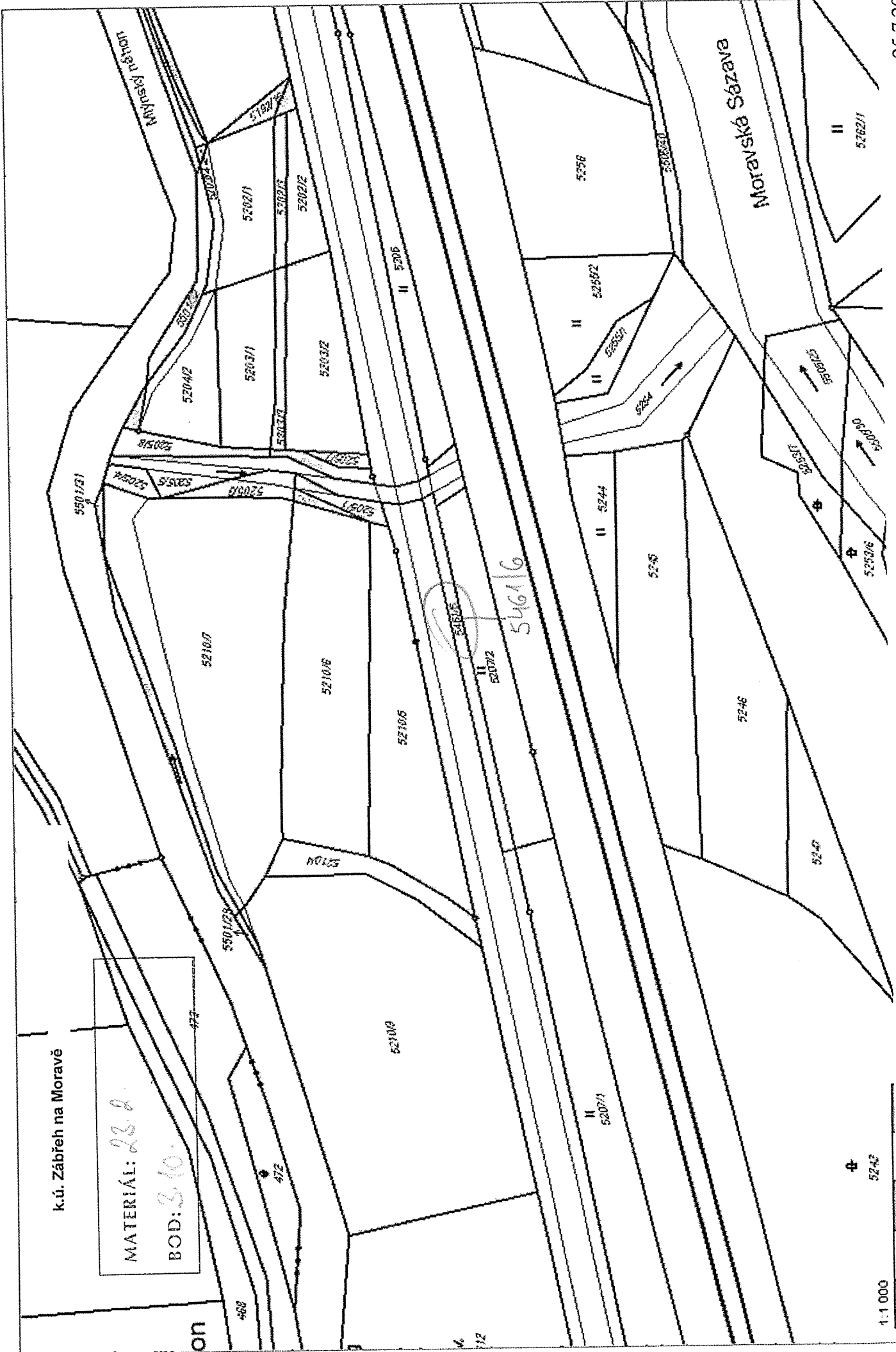
206

329-1685

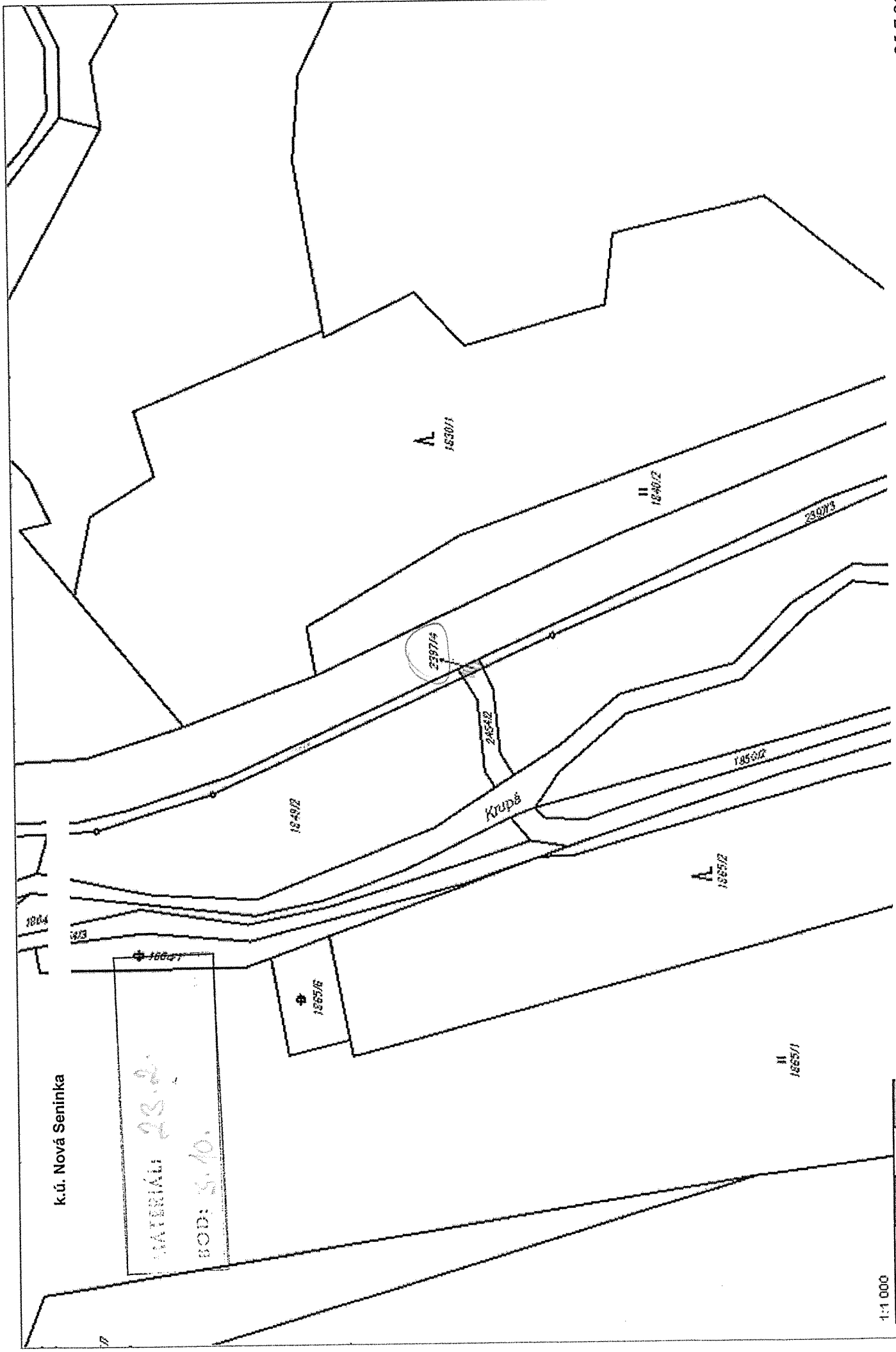
120

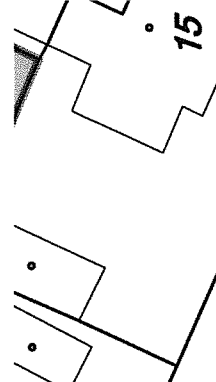
217/2





1:1 000





15

24

25

21

19

22

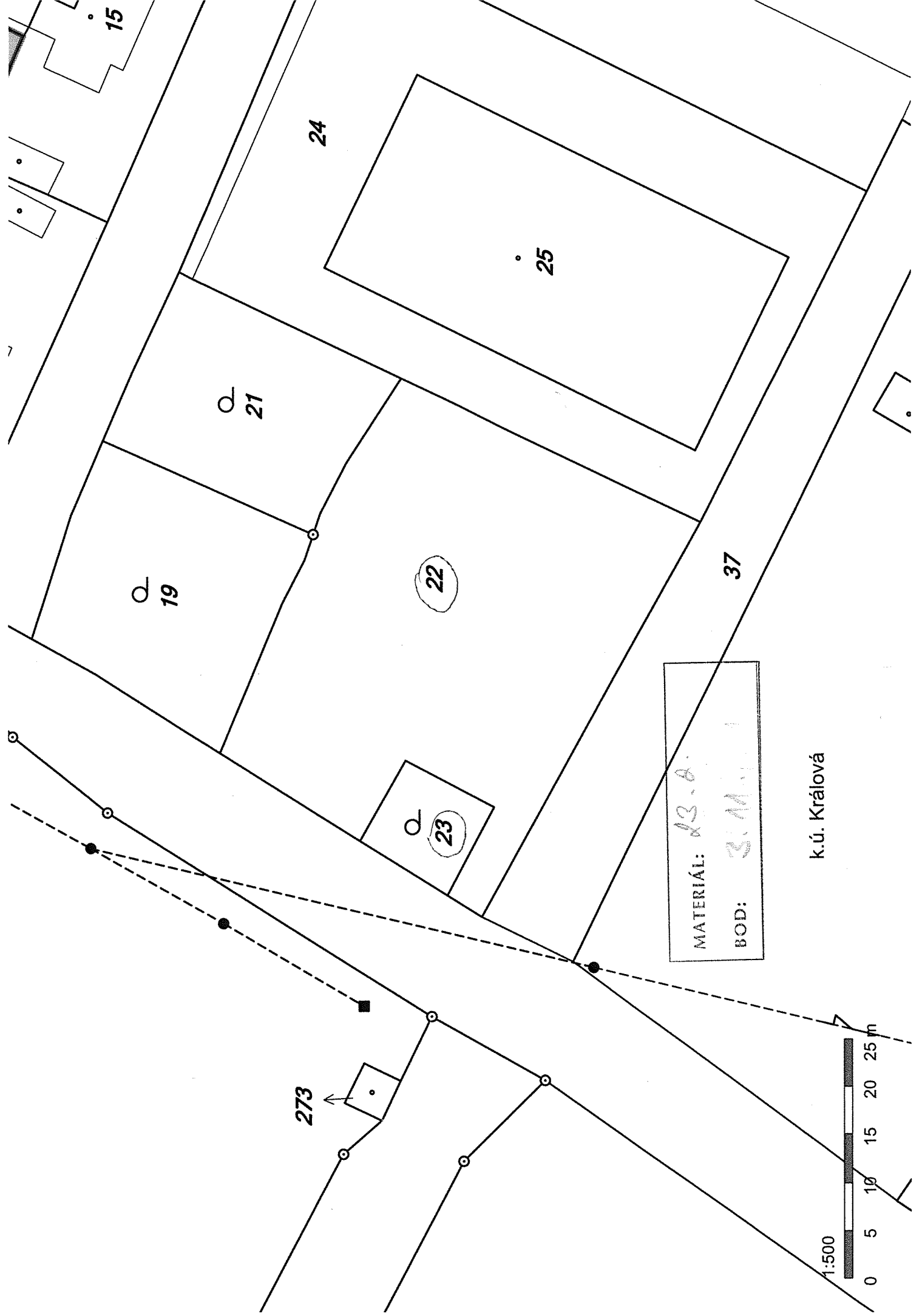
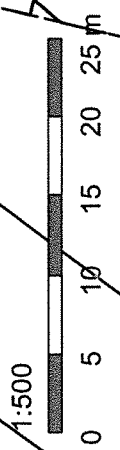
37

23

MATERIÁL: *23.8.*  
BOD: *3.11.1*

k.ú. Králová

273



k.ú. Náměť na Hané

290/217

MATERIÁL: 23.2

BOD: 3.10.2

290/218

834

863

838

290/219

290/220

290/221

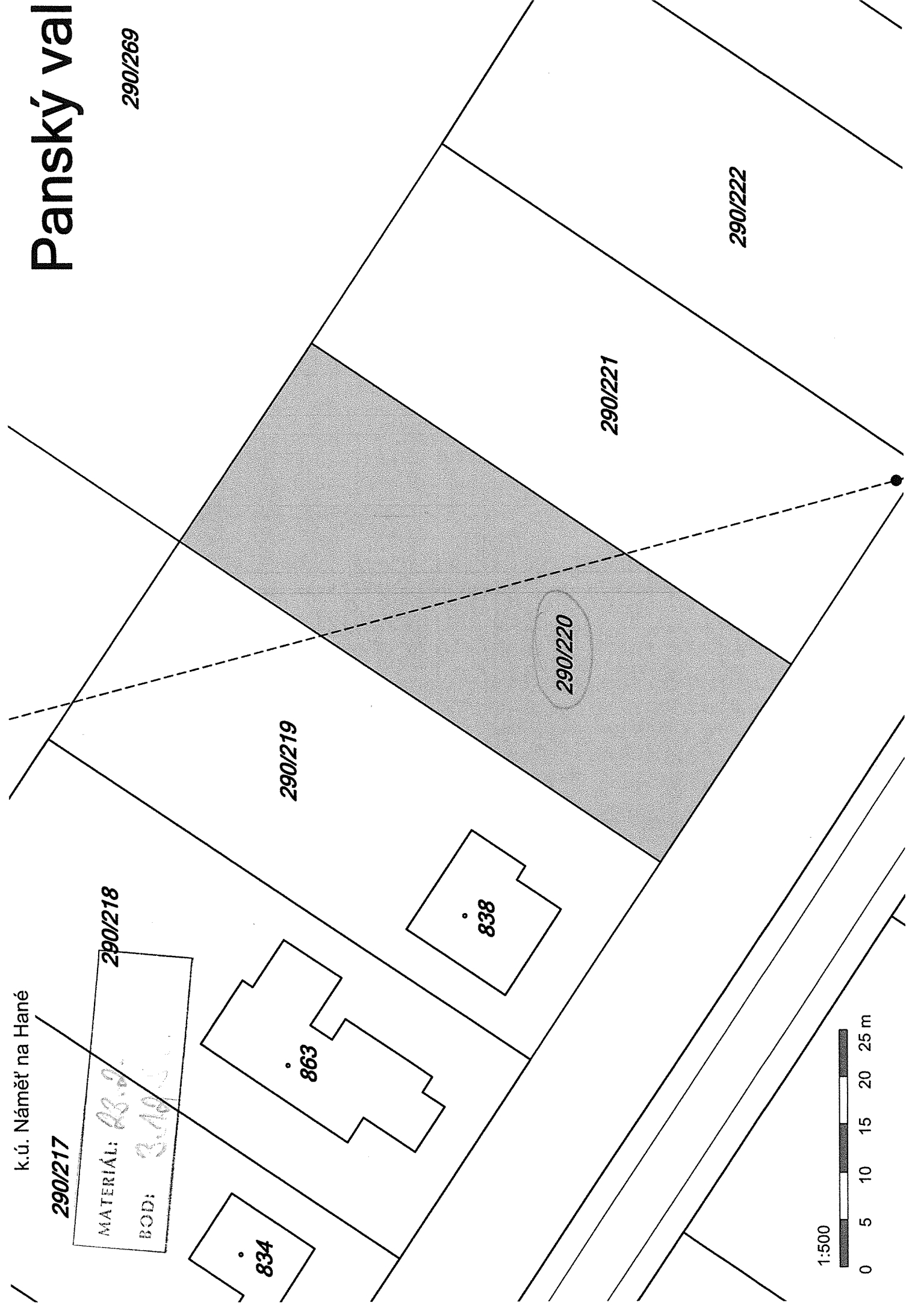
290/222

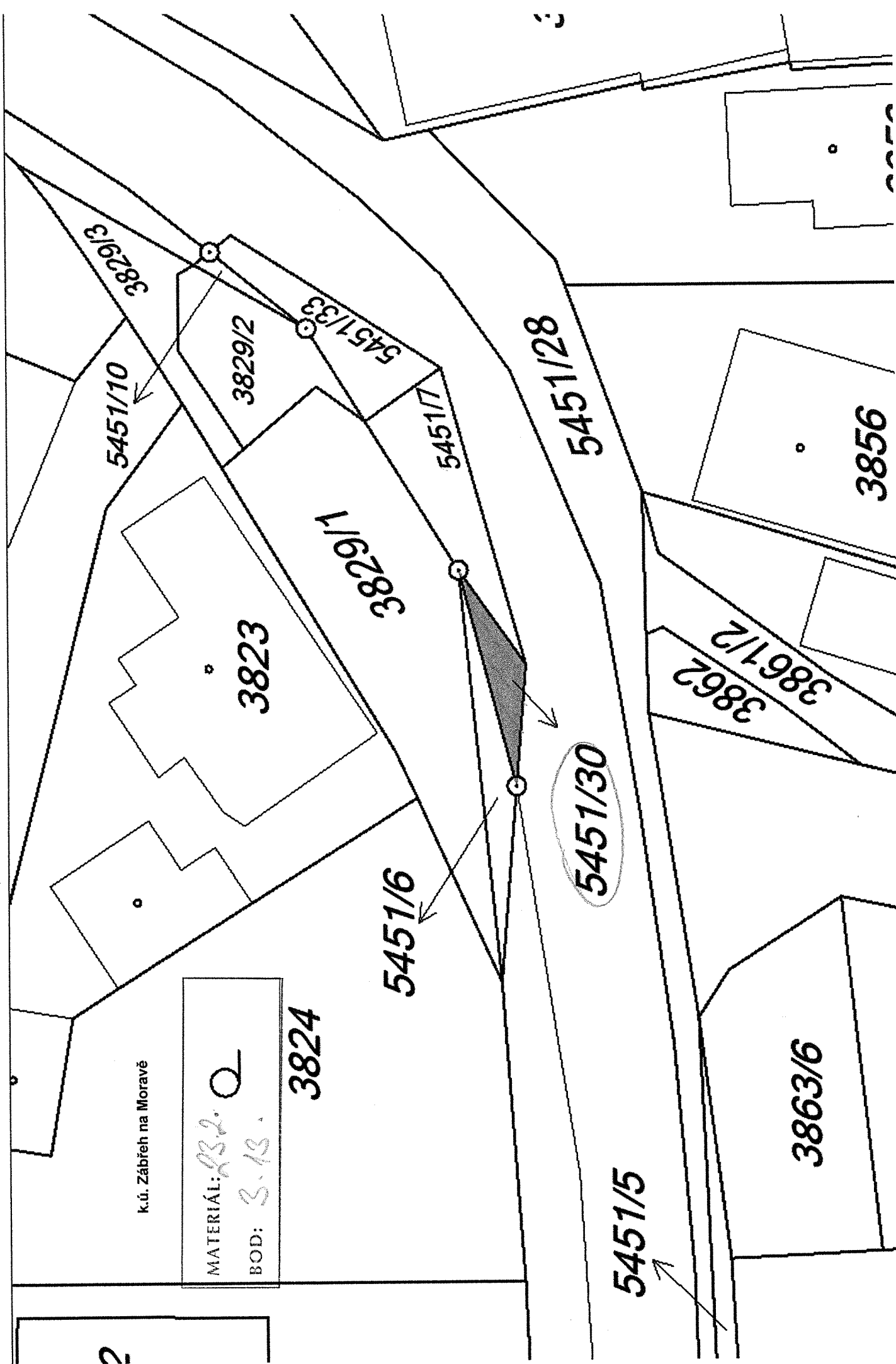
1:500

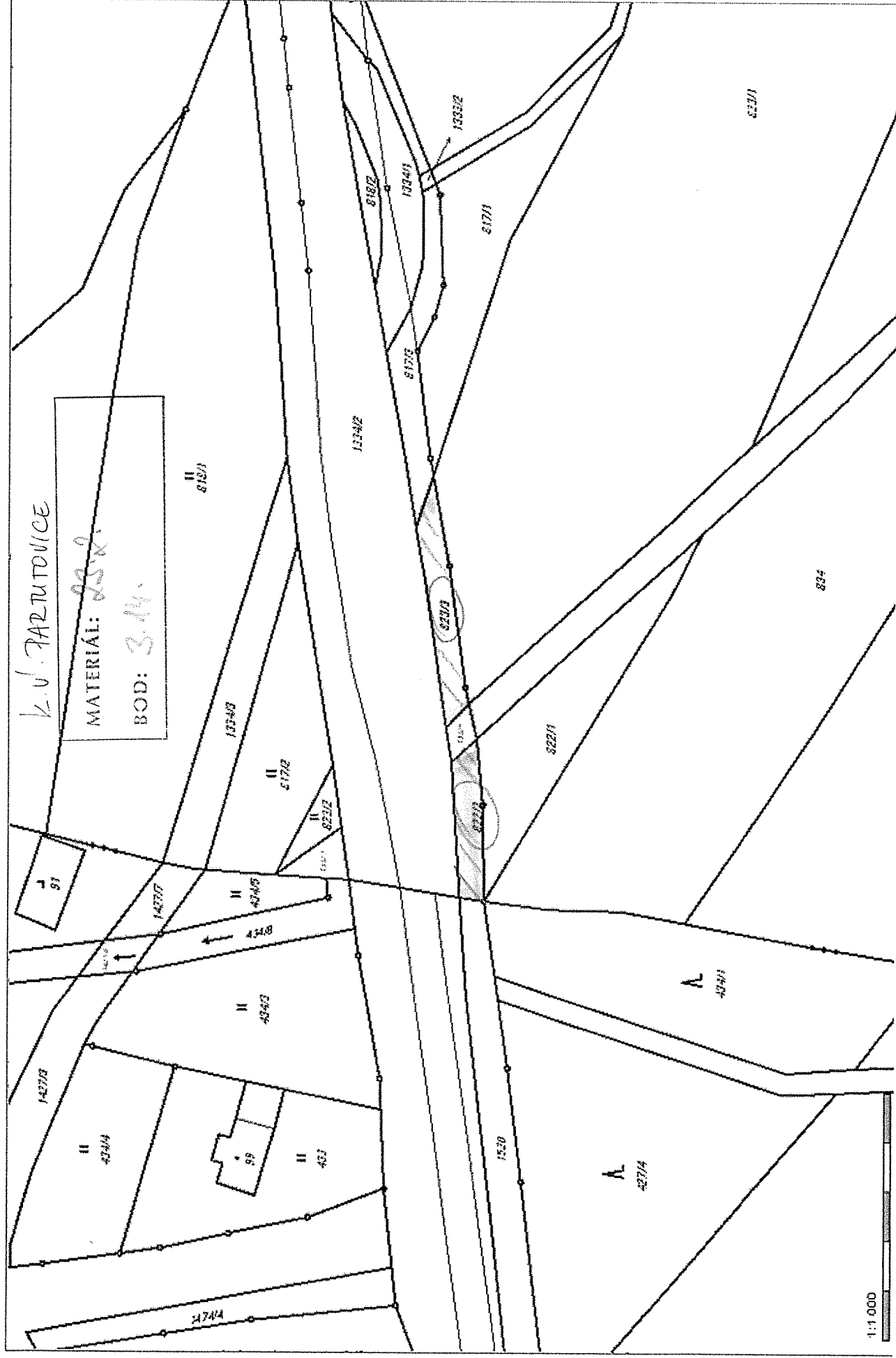
0 5 10 15 20 25 m

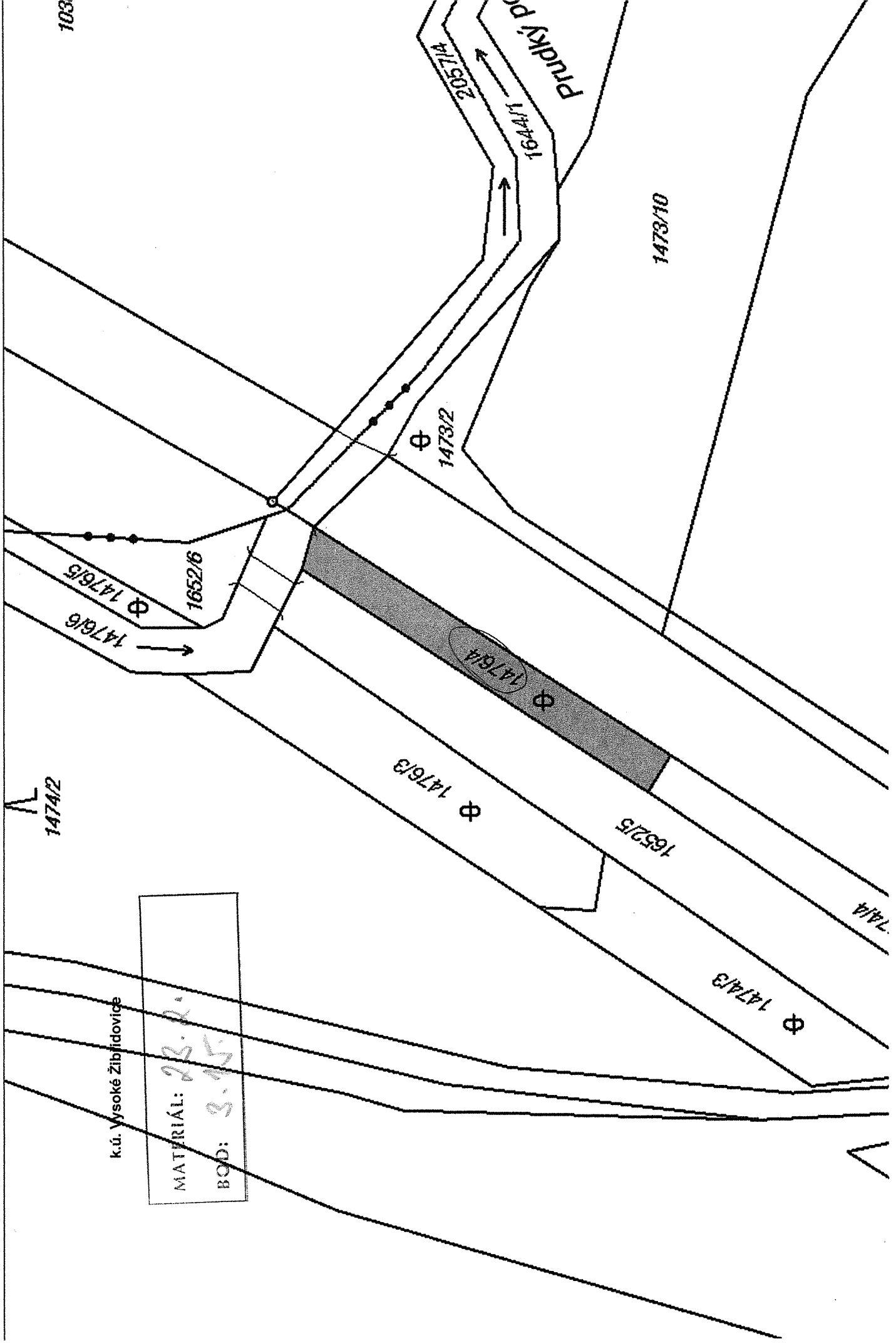
# Panský val

290/269



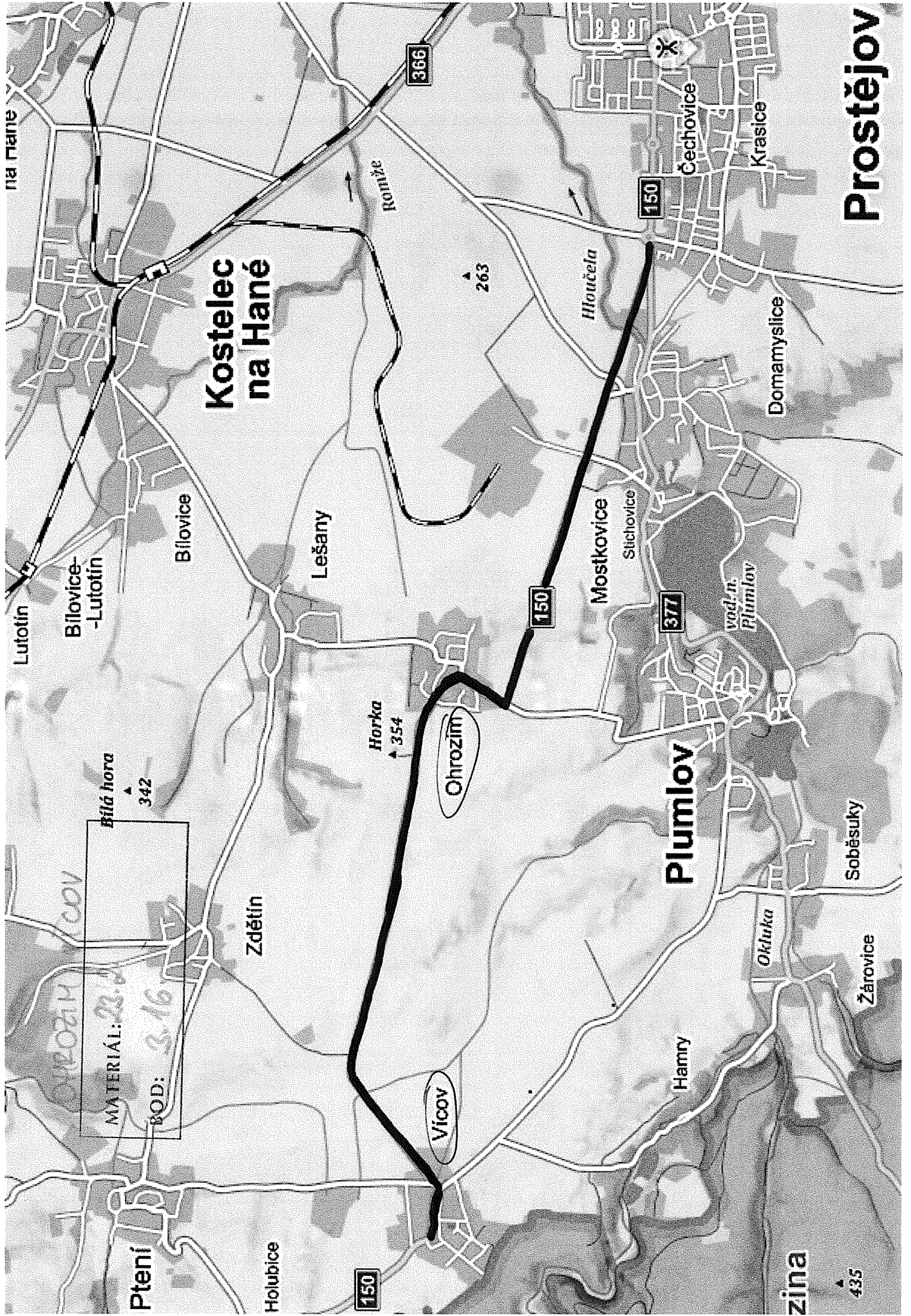






k.ú. Vysoké Žibřidovice

MATERIÁL: 23.2.  
 BOD: 3.15



OHROZIM COV  
MATERIÁL: 23.2  
BOD: 3.16

**Kostelec  
na Hané**

**Plumlov**

**Prostějov**

Bílá hora  
▲ 342

Horka  
▲ 354

Ohrozim

Vlcov

150

150

377

366

150

▲ 435



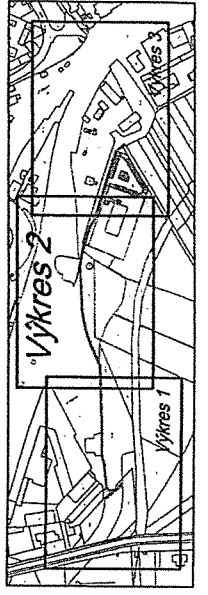
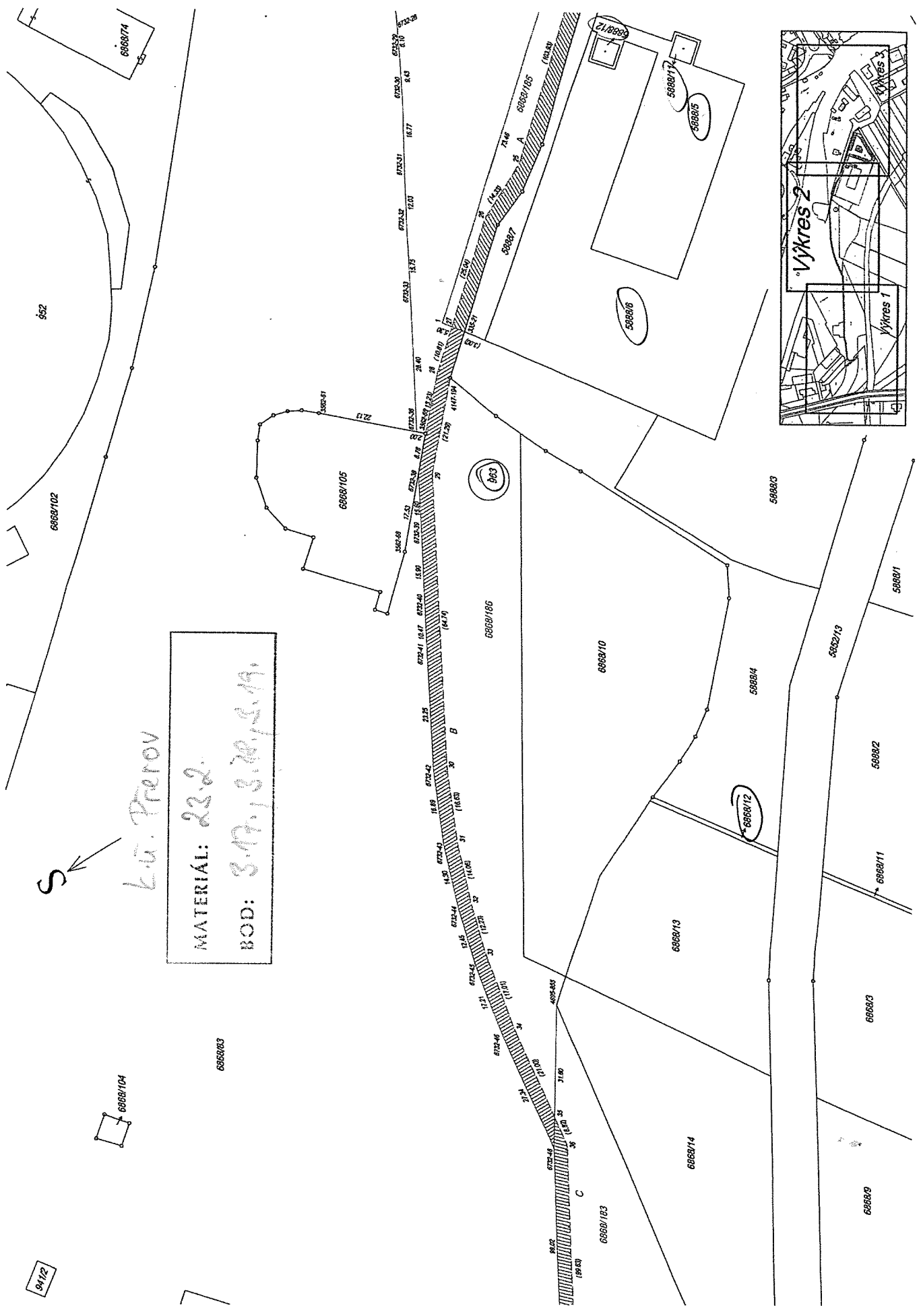
94/12

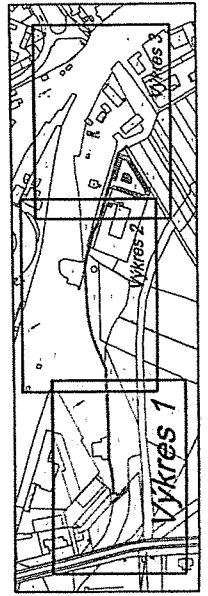
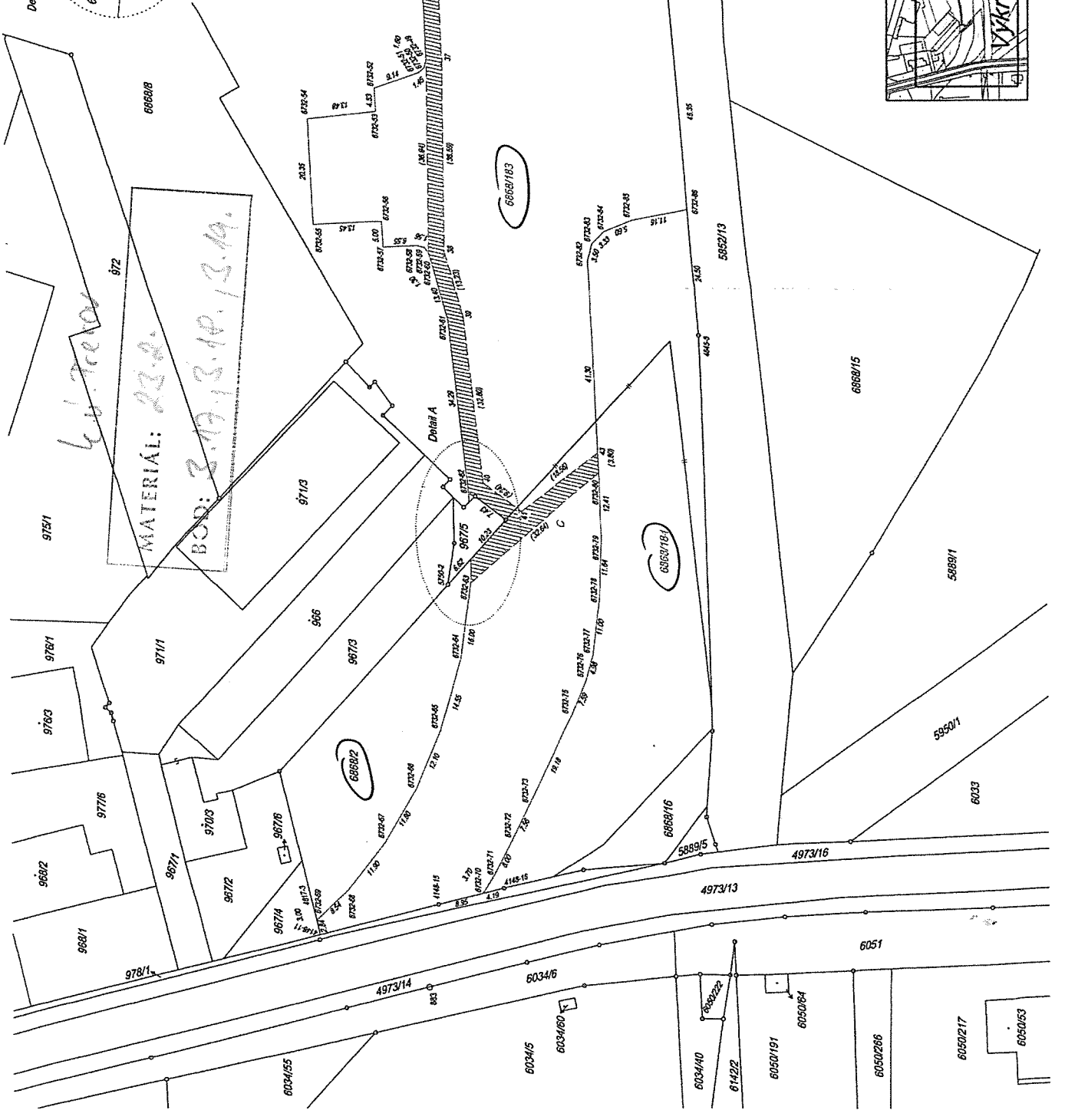
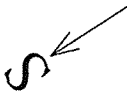
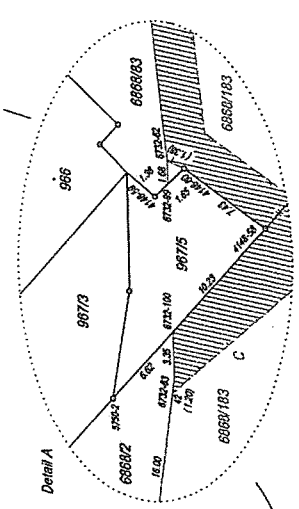


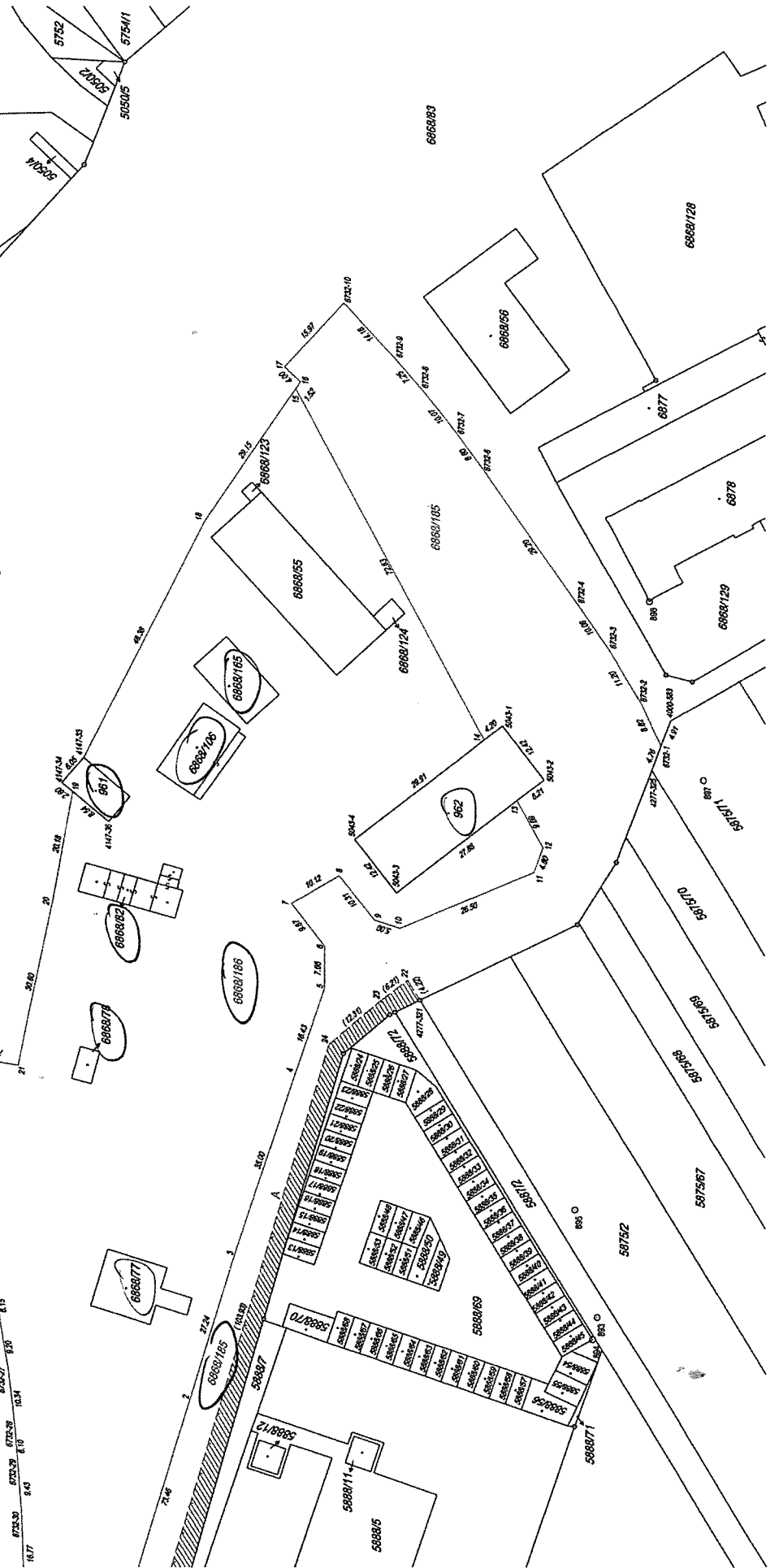
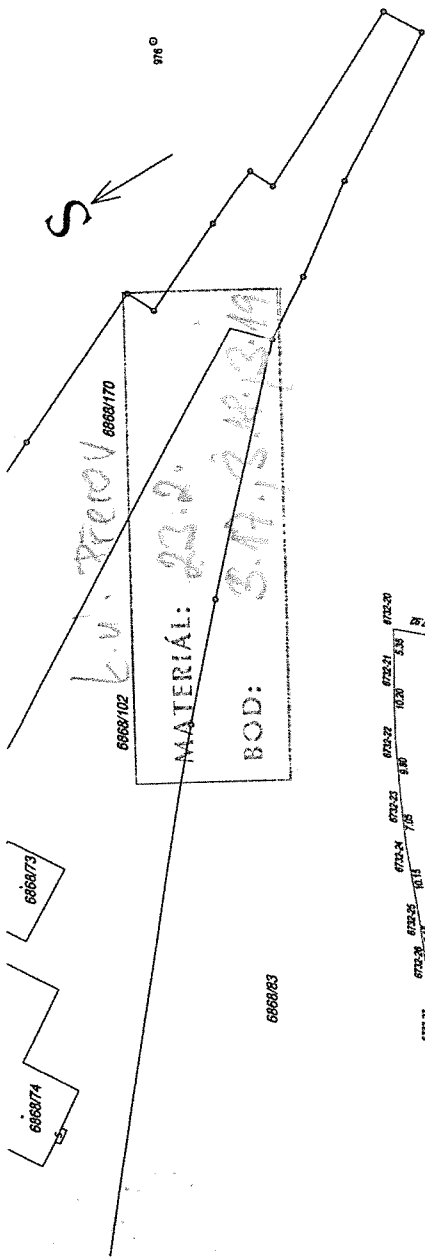
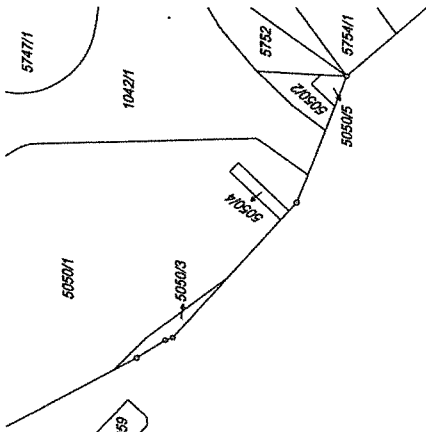
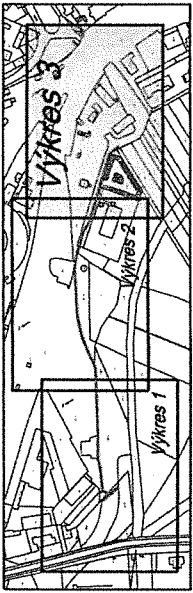
S

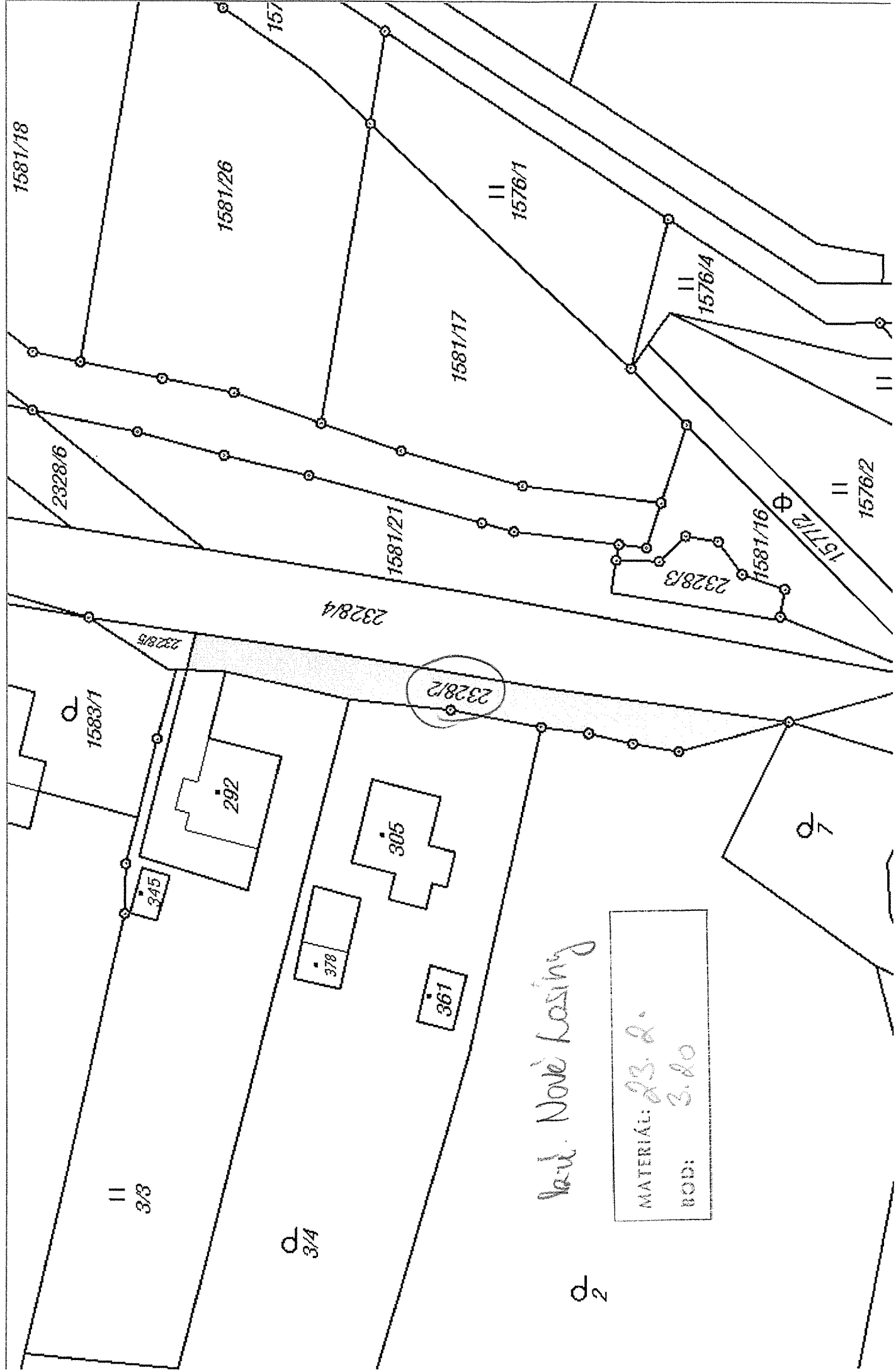
k.ú. Prerov

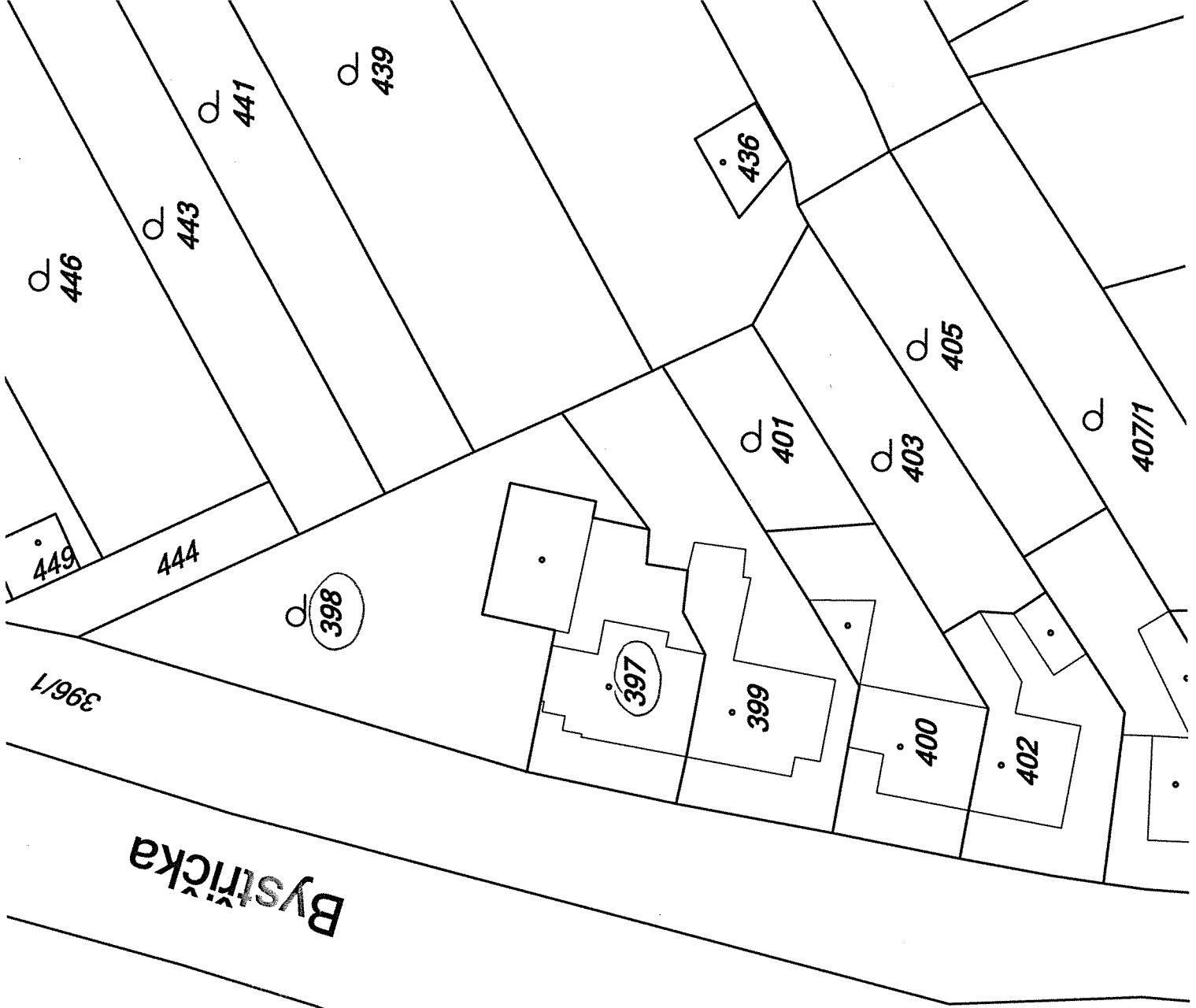
MATERIAL: 23.2.  
BOD: 3.17.13.20.15.19.











Bystřická



k.ú. Dřevohostice  
 MATERIÁL: 23.2.  
 BOD: 3.21.

