

2. u. Hruba' voda

MATERIÁL: 11.3.

ROD: 1.1.

6220

1174/3

319-36

29.38

37

36

2.70

319-37

22.10

38

10.40

39

10.70

40

2.78

41

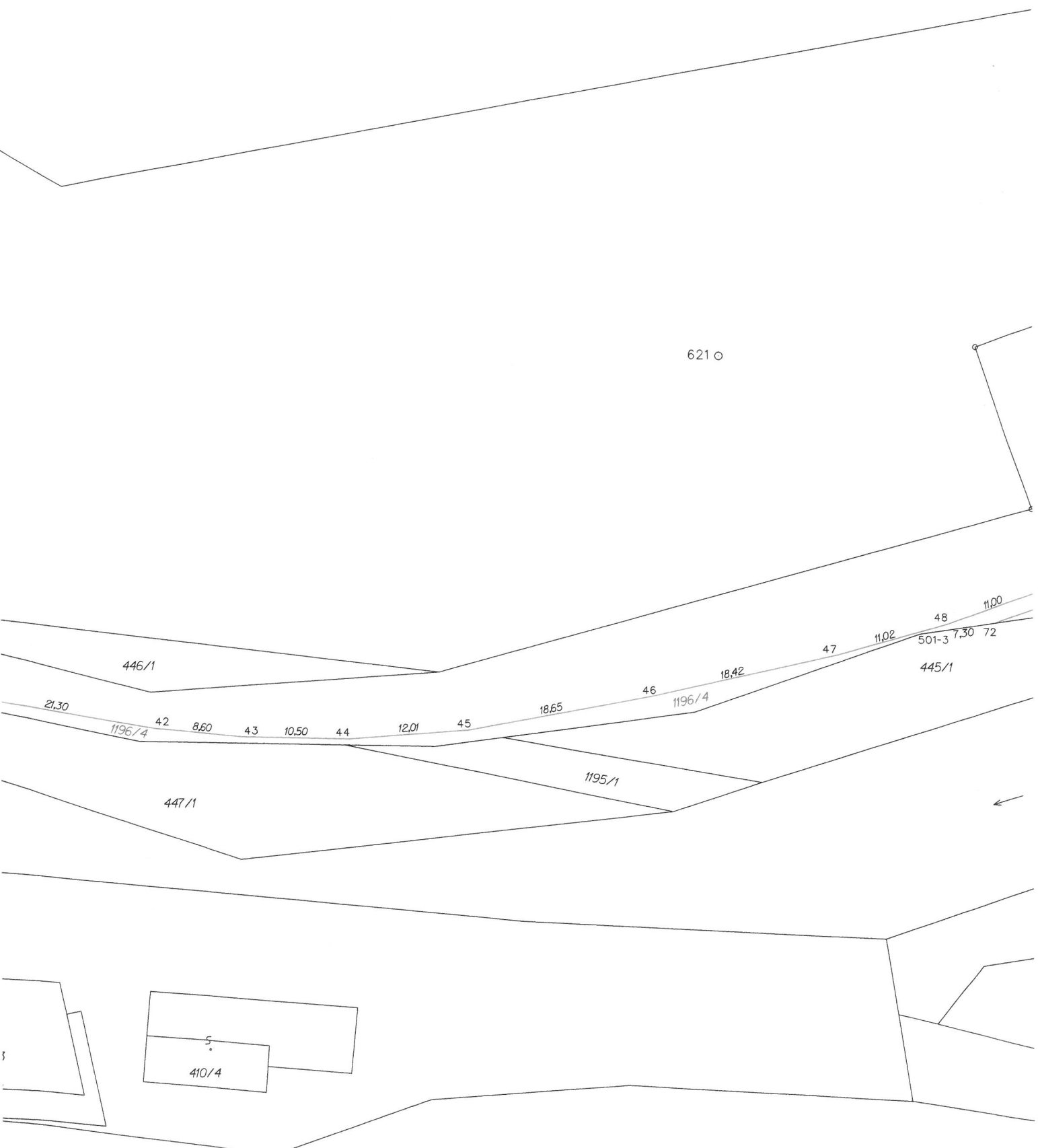
II  
410/1

S. u. Kumba Toda

1142/3

MATERIÁL: 11.3.  
DOD: 1.1.

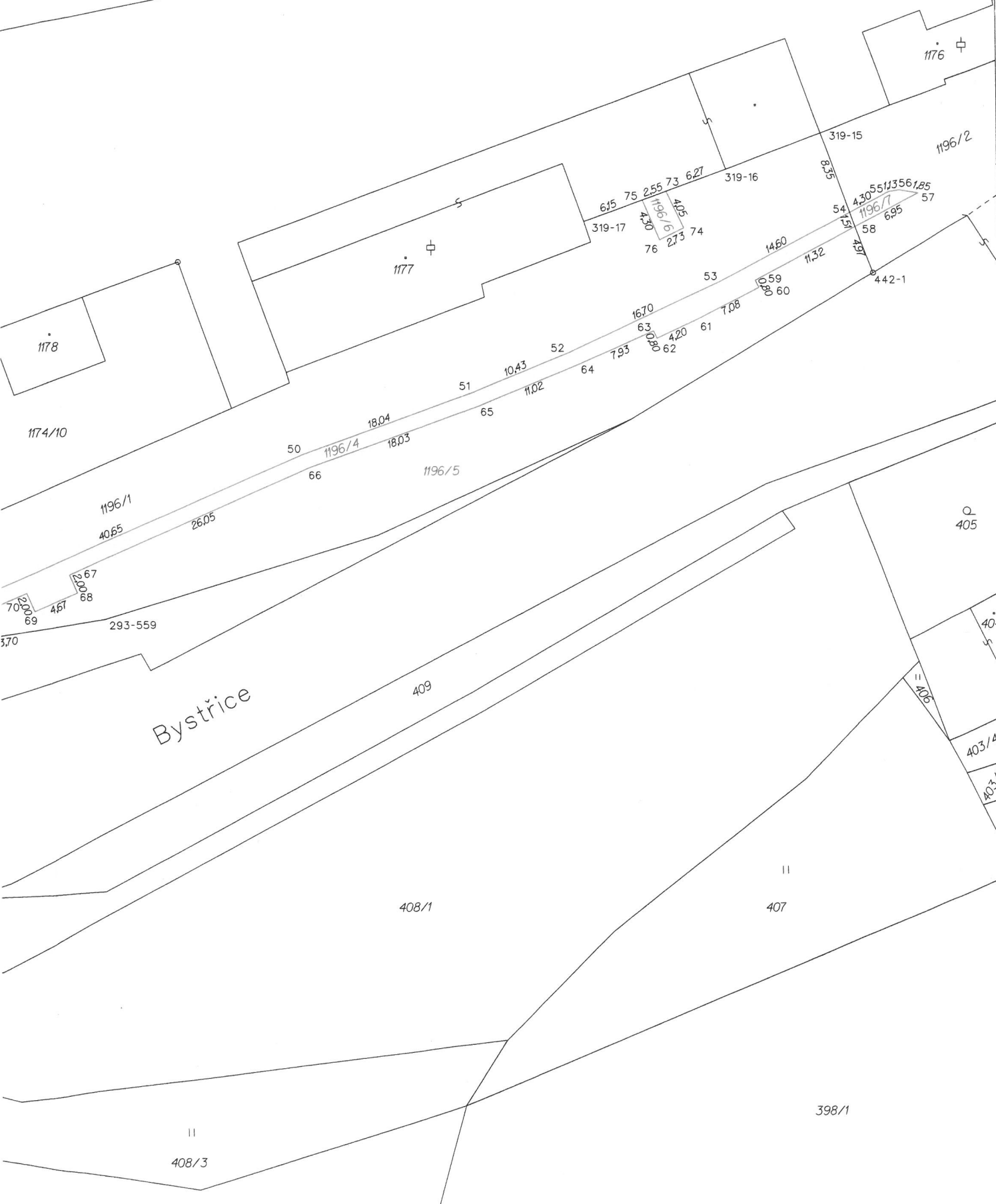
621 o



6200

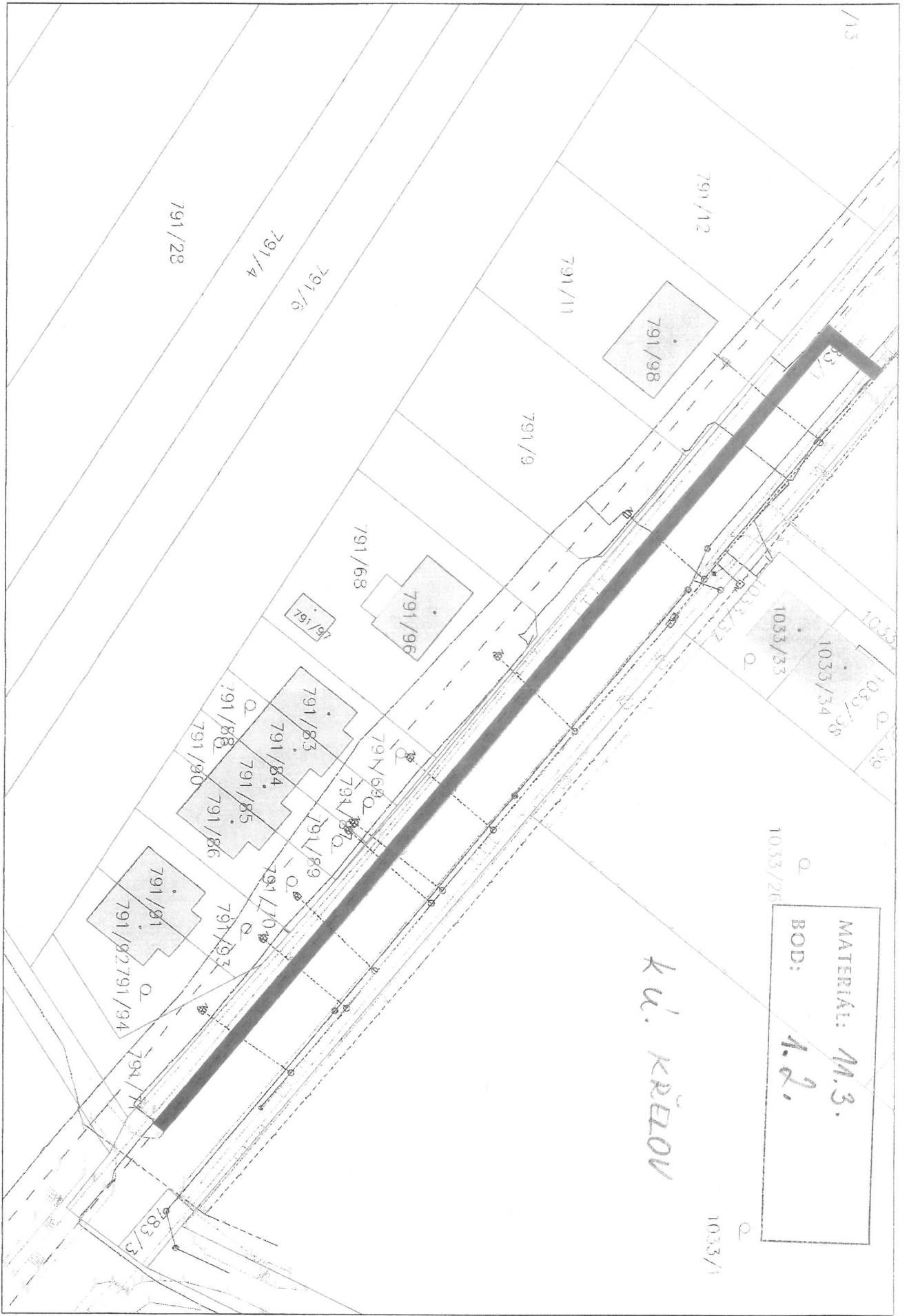
*L. u. Krubá' voda*

MATERIÁL:	11.3.
BOD:	1.1.



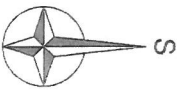
Bystrice

/13



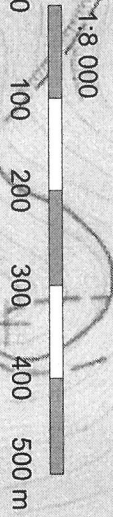
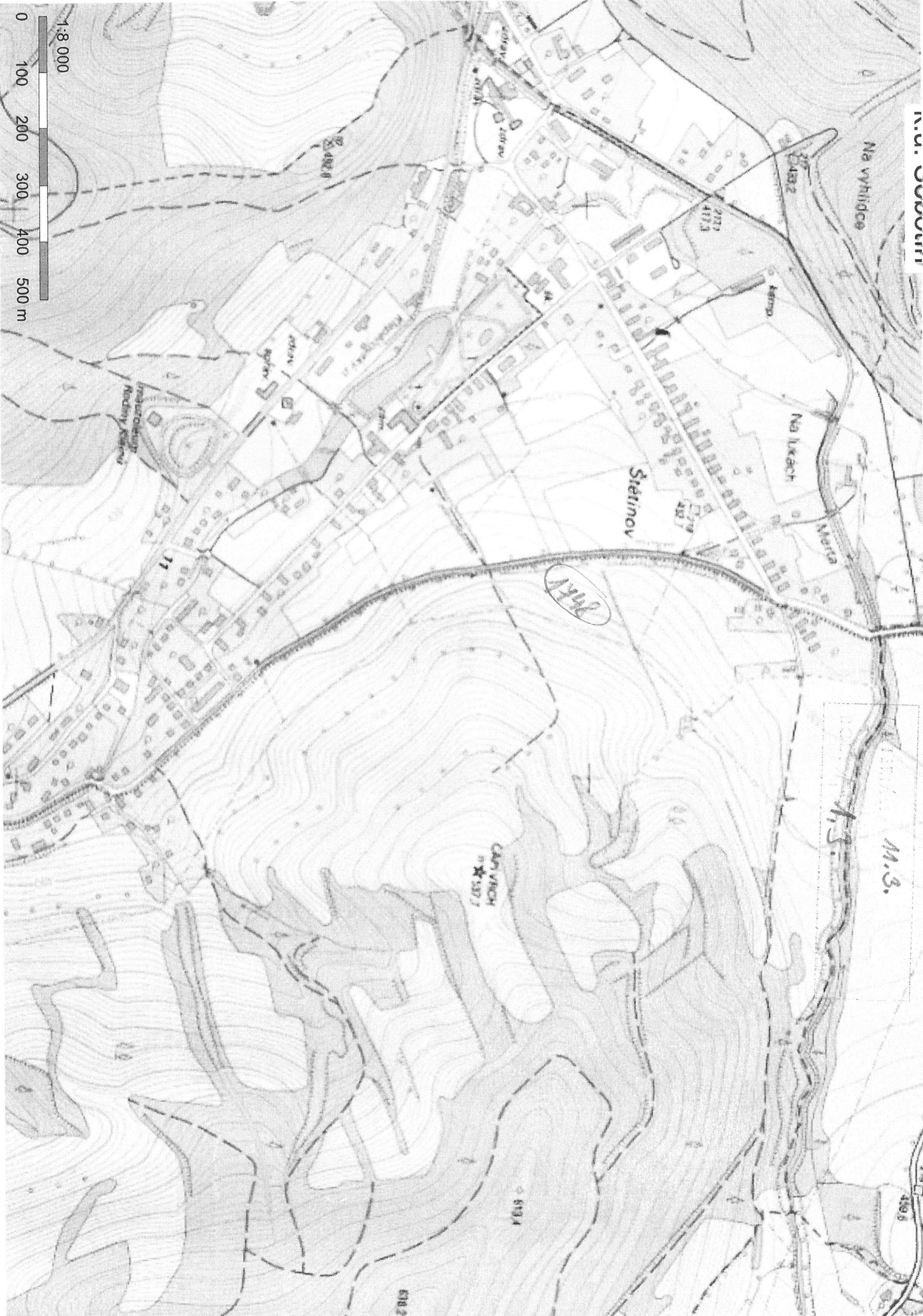
MATERIÁL: M.3.  
 BOD: 1.2.

k u. KŘELOV



OBEDNATEL:	OBEC KŘELOV – BRUCHOTÍN	<b>SOTOLÁŘ</b>
VYPRACOVAV:	ING. SOTOLÁŘ	MĚŘÍTKO: 1:500
DATUM:	04/2021	AKCE: CHODNÍK PRO PĚŠÍ NA ULICI KRÁTKÁ V KŘELOVĚ





1:8 000

M.S.

A.S.

PARK

ČERNÝ VÍCHOV  
17. 12. 1977

Stejnou

Na vřídce

Na lískach

Marta

Arnošt

237

413

242

208

211

218

221

224

227

230

233

236

239

242

245

248

251

254

257

260

31

Podobáňský  
Národní výbor

287

436

512

514

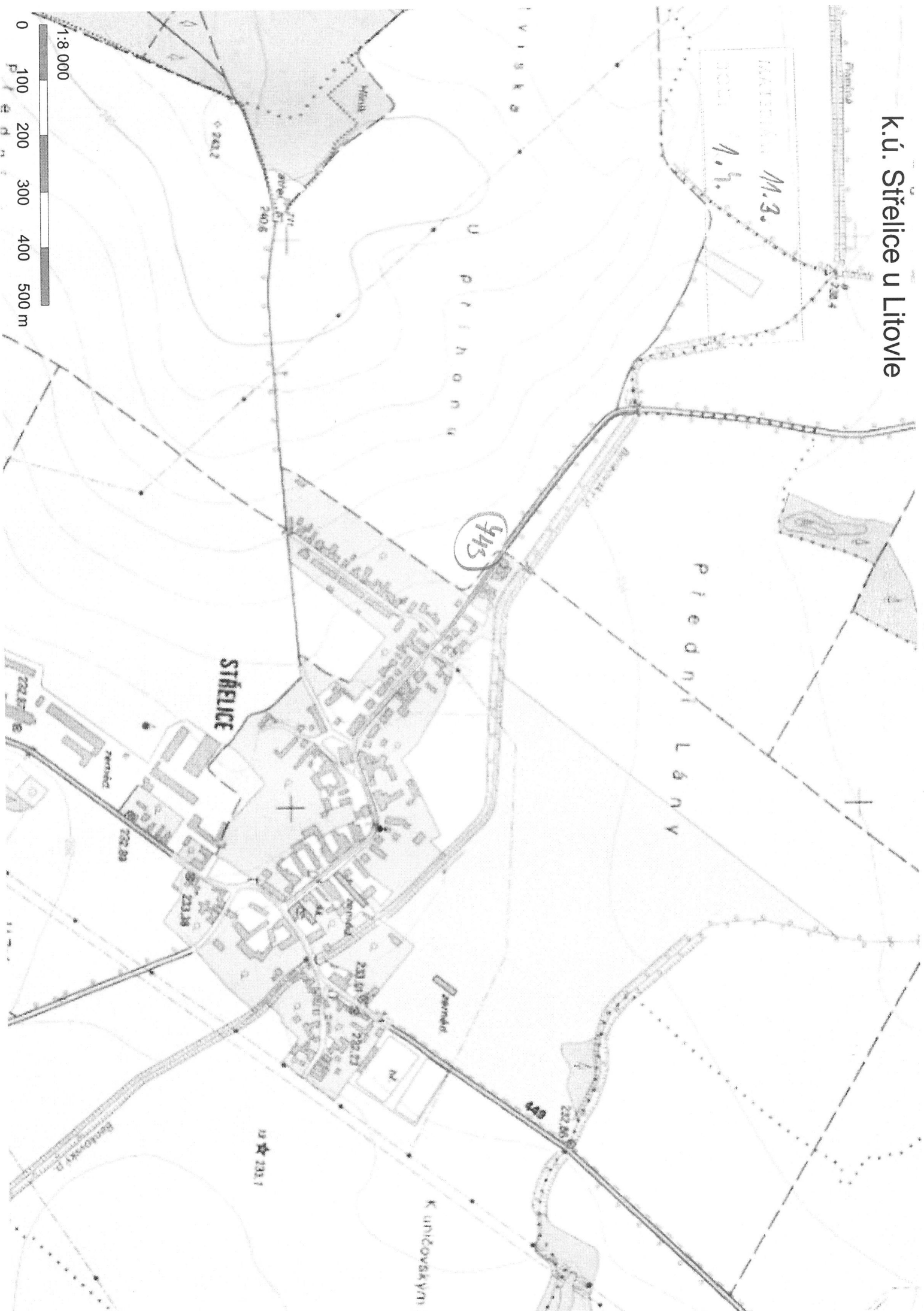
K.ú. Sobotín

M.ú. 1.3.  
1.3.



458217

# k.ú. Střelice u Litovle





# k.ú. Rataje u Olomouce

K a l i k o u

Skopalikovo pole

M.3.  
15. dílka

Za mostem

U splovy

## Těšetice

Mezi

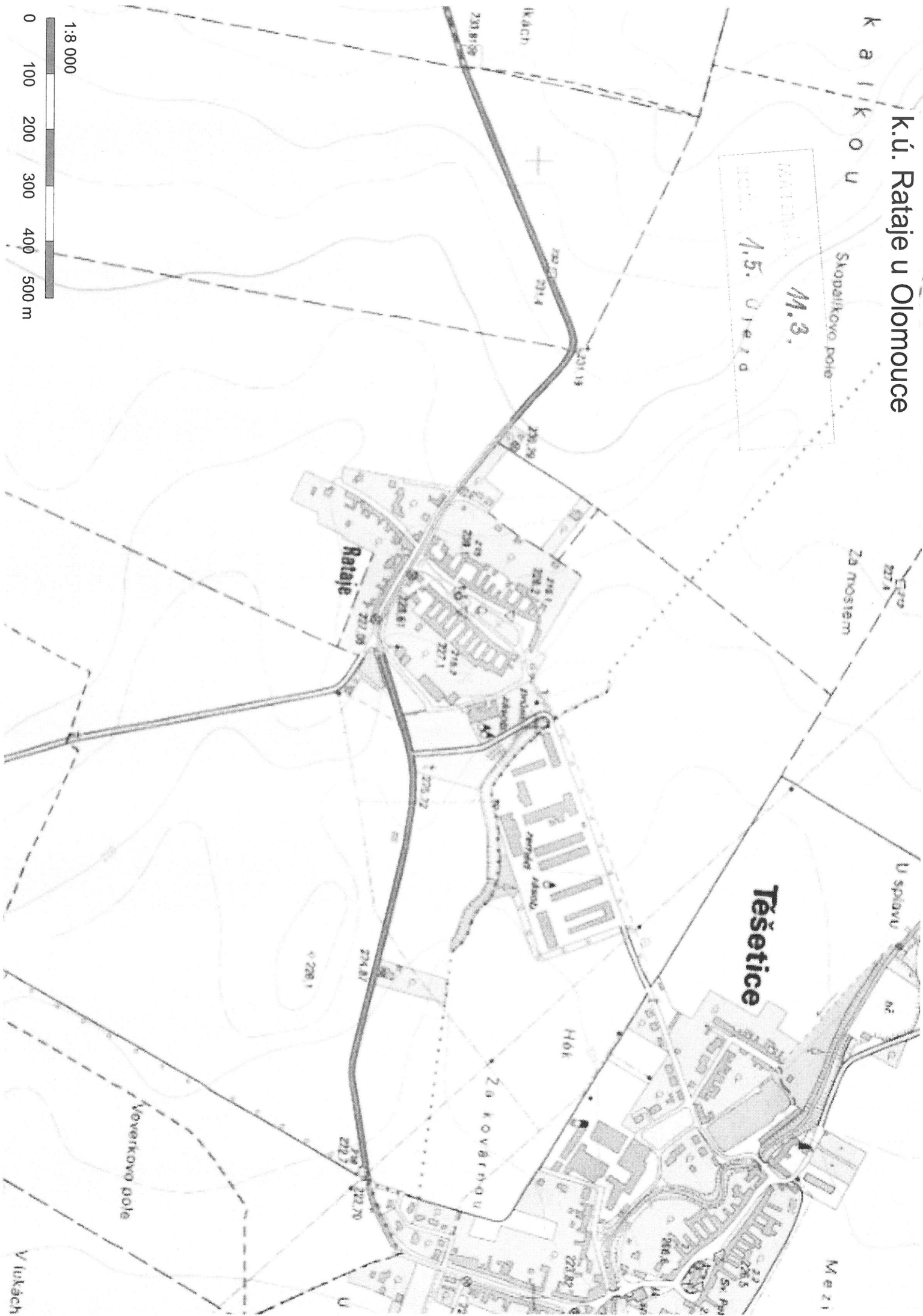
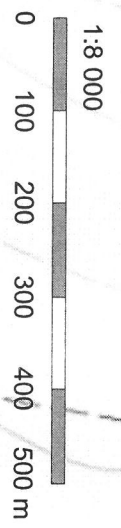
Ikáčh

Rataje

Za kovárnou

Veveřkovo pole

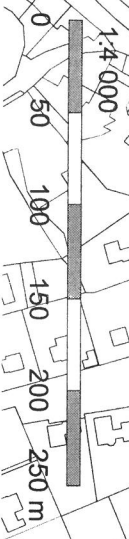
V lukách



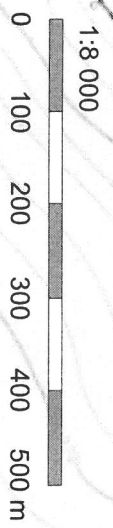
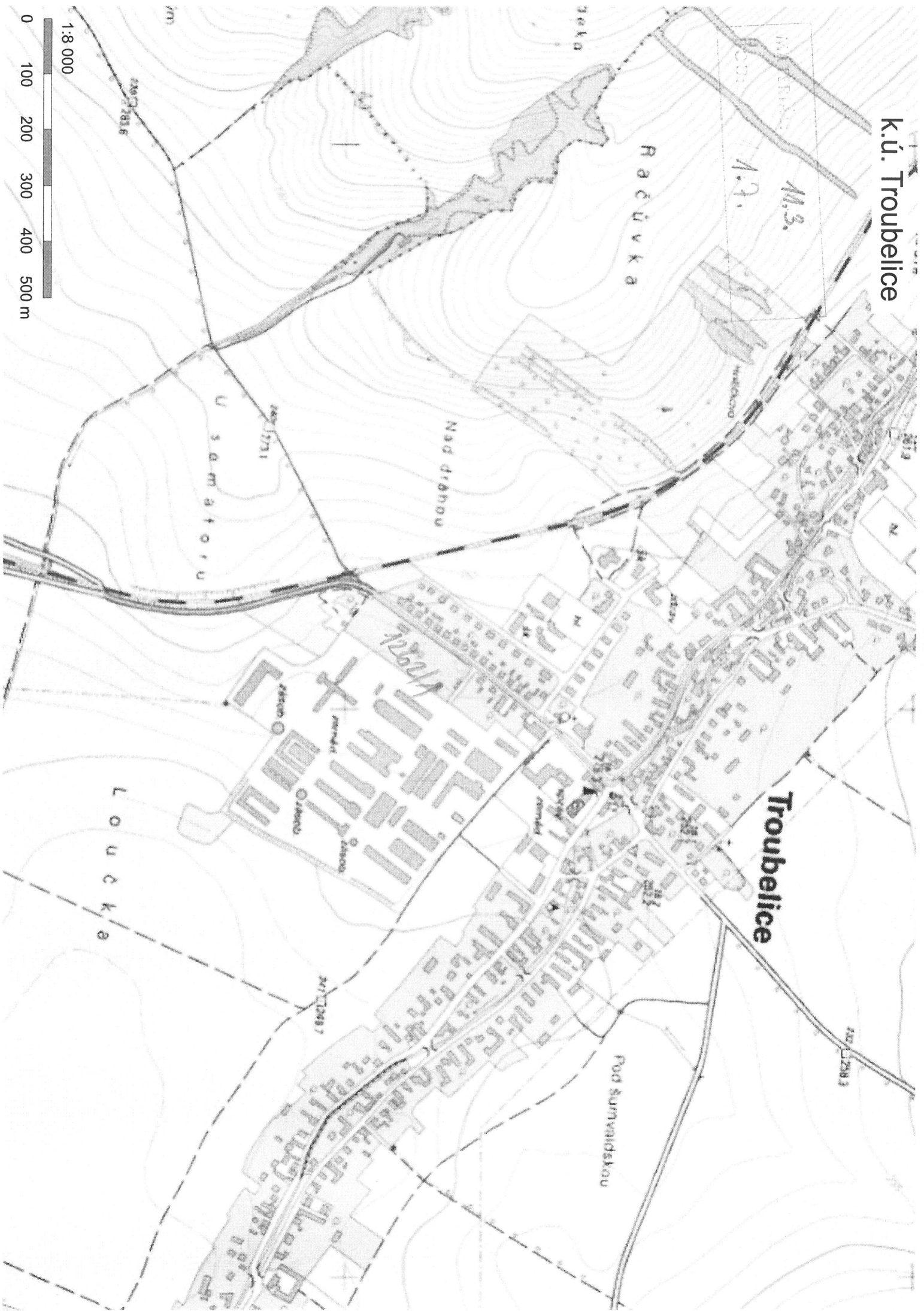
k.ú. Velká Bystřice

WATERK. 11.3.  
1001 1.6.

224315

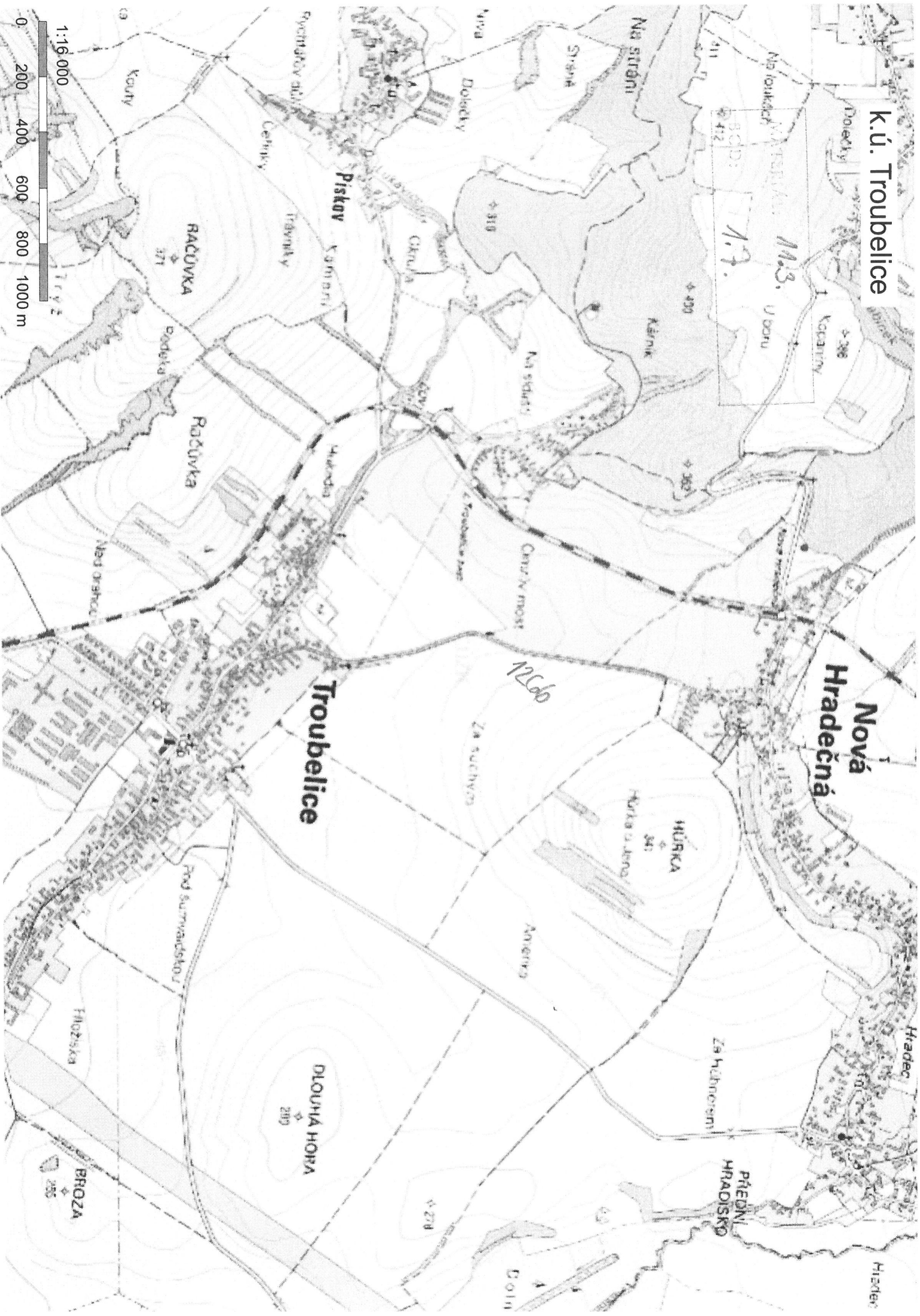


# K.ú. Troubelice





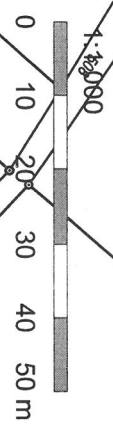
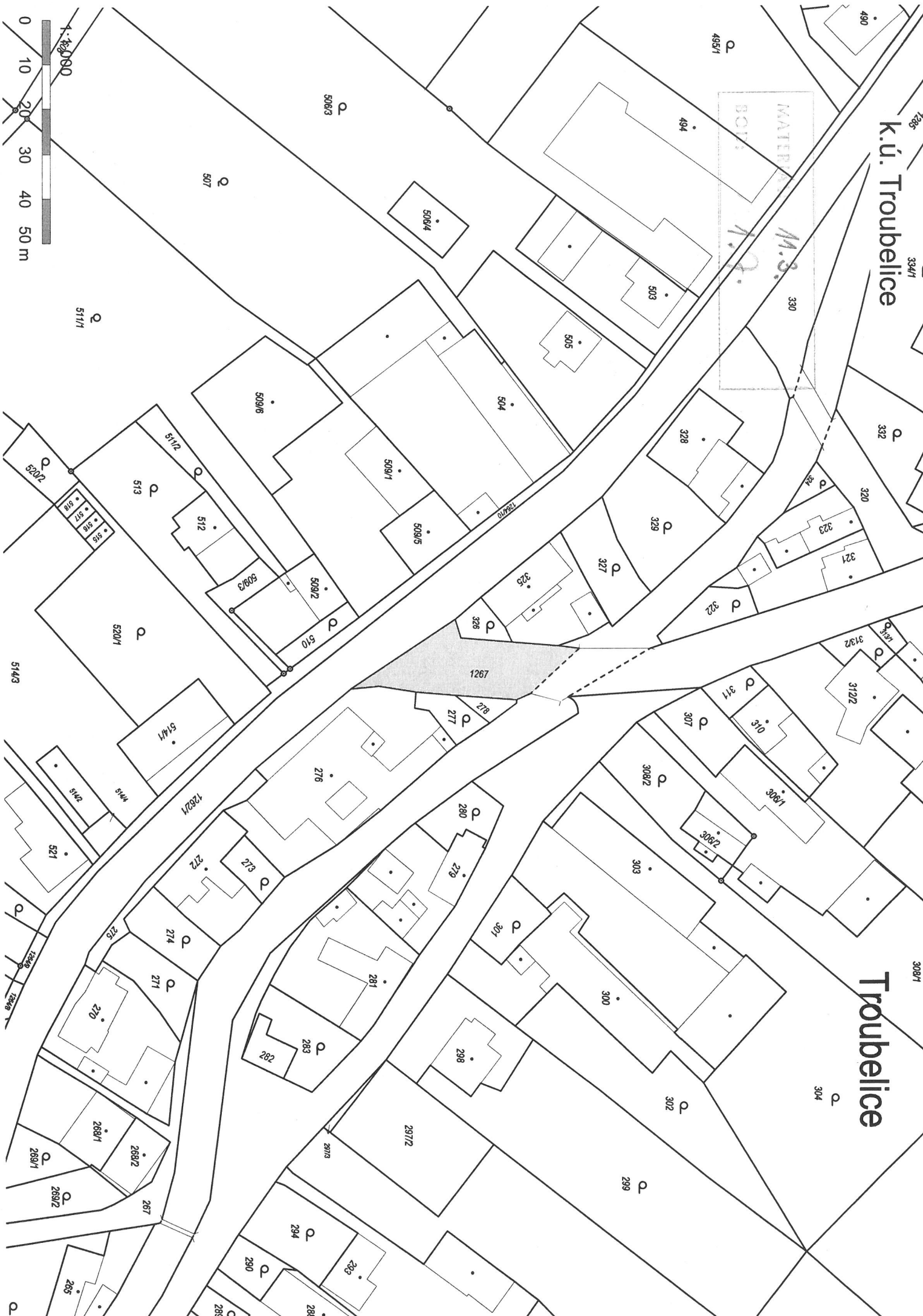
# k.ú. Troubelice



K.ú. Troubelice

Troubelice

MATEPRA  
BOU  
M.S.  
K.ú.



1:42,000



K.ú. Dolány u Olomouce

