

# Olomouc region GUIDE BOOK



[www.ok-tourism.cz](http://www.ok-tourism.cz)

## Dear tourists and experience lovers



it can be a little bit misleading to call this handbook a guide book. First of all, guide books are used not to get lost, not just to learn about history of places around. Nevertheless, whenever you take a wrong turn in Olomouc Region, you will not regret after all. Every time you can find new places: a castle, a waterfall, any interesting place. Our Region is totally unique in this respect. Your partner may like a spa, you may like lookouts, your children may like caves or museums, still you all can travel together. Go any direction, you will definitely meet a healing spring, a hill or a lookout, beautifully decorated caves and many exhibitions and expositions, which are to be seen not only in towns but also in the countryside.

To make your travel plans easier, we have published this guide. There are many pages of travel tips, however, we did not include all the places as we wanted to make this guide book small enough to fit into your glovebox in the car and light enough to carry in your backpack. Have a safe journey!

*Ladislav Okleštěk,  
the President of the Olomouc Region*



Published by: Olomoucký kraj, Jeremenkova 40a, 779 11 Olomouc, e-mail: [tourism@kr-olomoucky.cz](mailto:tourism@kr-olomoucky.cz), [www.ok-tourism.cz](http://www.ok-tourism.cz), tel.: (+420) 585 508 111

1st edition, 12/2017. Design, texts, typesetting: VENDI, s. r. o., Určická 31, 796 01 Prostějov

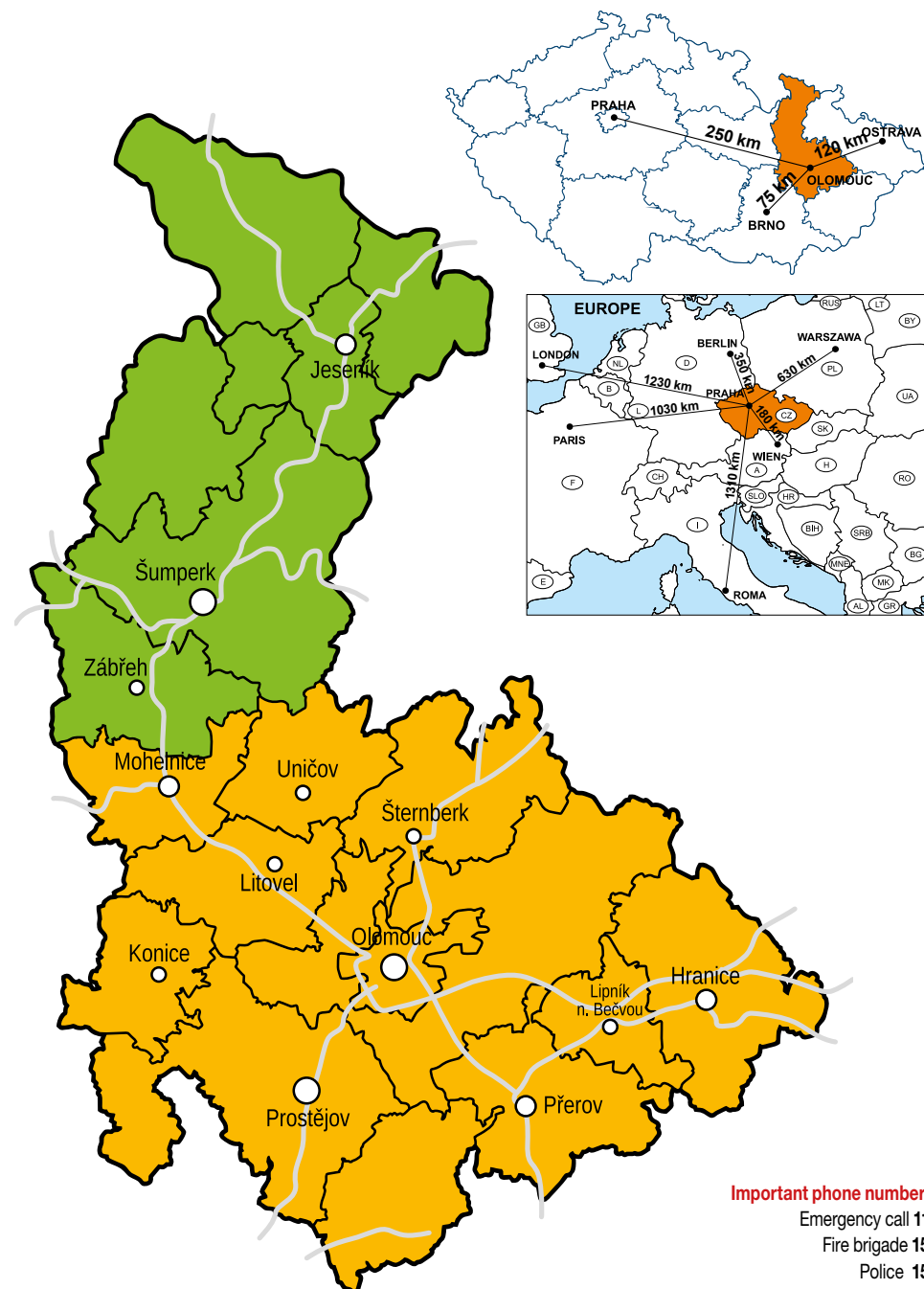
Print: TISKÁRNA K-TISK, s. r. o., Dolní 1452/11, 792 01 Bruntál

Photos: archives of tourist destinations introduced in this guide. Copyright: © Olomoucký kraj  
NOT FOR SALE

ISBN 978-80-87982-90-7 (English version)

ISBN 978-80-87982-91-4 (German version)

ISBN 978-80-87982-92-1 (Polish version)



### Important phone numbers:

Emergency call 112

Fire brigade 150

Police 158

Ambulance 155

ABA assistance for drivers 1240, Information about phone numbers 1188



## Central Moravia

Central Moravia - this fertile land stretching along Morava river is a charming Region, called Haná since 16th century. It is characterized by rich cultural traditions and folklore. The most popular folk festivals take place in Prostějov and Tovačov, the traditional Ride of Kings in Doloplazy and Kojetín. More about Haná people and their lives you can learn in a Haná open-air folk museum in Příkazy. There are also many castles, chateaus and ruins around, which, in fact, serve as an illustration of rich history of this Region - for example the fairytale castle Bouzov. You can also get new information in museums and galleries. There are some rarities as well

- Archbishop palace, collections in Arcidieceze museum, Time exposition in Šternberk, Museum of carriages in Čechy pod Kosířem or Muzeum of national history in Olomouc. Central Moravia is full of cycleways leading into charming towns and villages. If you love water, you can visit many aquaparks, lakes and ponds or try rafting. Nevertheless, the Region has its dark interesting places underground as well, you can visit many caves here. And after all day travelling you will definitely deserve something delicious to eat, why don't you taste the unique cheese tvaruzky and drink local beer? In the evening spoil yourself in one of the famous spas and enjoy the relaxing atmosphere.

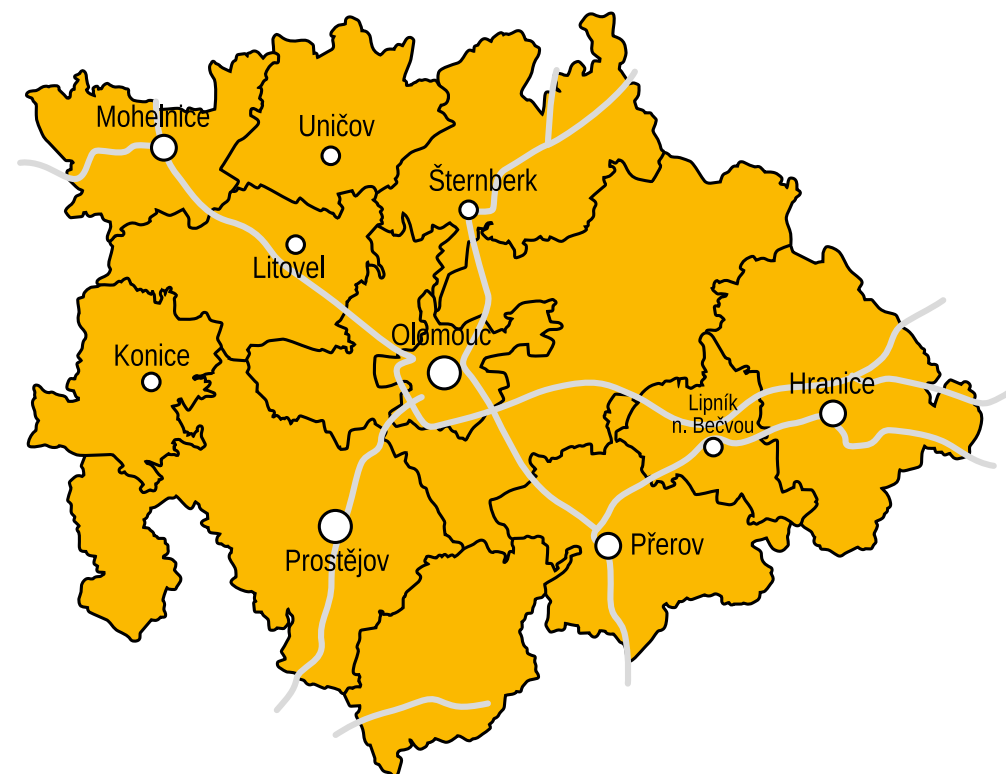
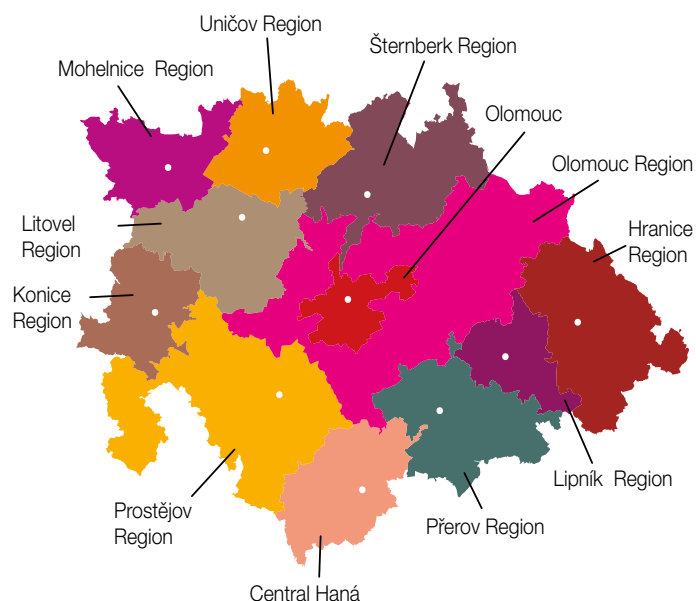


### Střední Morava - sdružení cestovního ruchu

Organisation of tourism  
Horní náměstí 5, 772 00 Olomouc  
Tel.: +420 585 204 627-629  
E-mail: [info@central-moravia.cz](mailto:info@central-moravia.cz)  
[www.strednimorava-tourism.cz](http://www.strednimorava-tourism.cz)  
Open: Mon - Fri

### Content:

Olomouc .....	6-15
Olomouc Region .....	16-17
Přerov Region .....	18-19
Hranice Region .....	20-21
Lipník Region .....	22
Prostějov Region .....	23-25
Konice Region .....	26
Central Haná .....	27
Šternberk Region .....	28
Uničov Region .....	29
Litovel Region .....	30-31
Mohelnice Region .....	32-33





The Upper square („Horní náměstí“) in Olomouc with its dominant feature - Holy Trinity Column

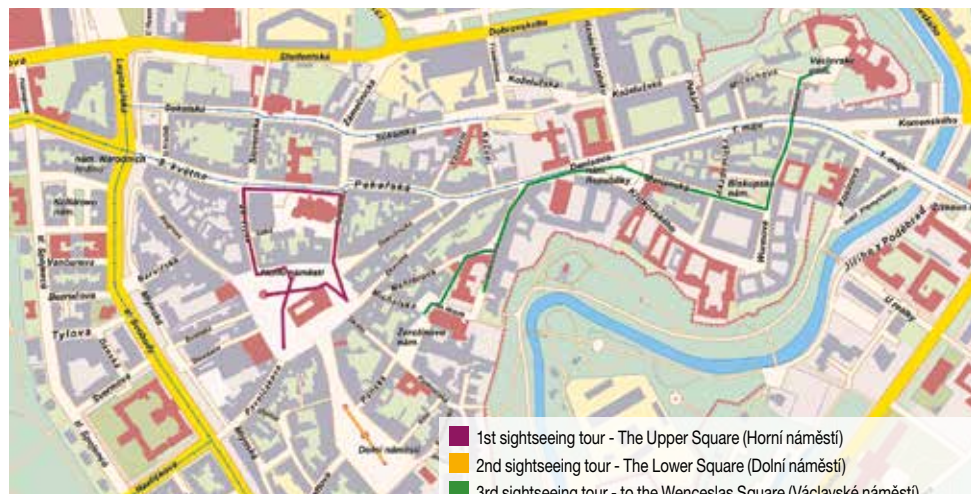
The second largest conservation area in the Czech Republic offers a wide range of attractive places: monasteries, temples, art museums, technical museums, large parks, a ZOO or an aquapark. Olomouc can take pride in its Baroque column Holy Trinity Column in the Upper square, which was inscribed on the UNESCO World Heritage List in 2001.

If you plan to visit Olomouc, you should definitely see this monument with more than forty statues. It is the most magnificent and the highest monument of its kind in the Czech Republic. Next places worth seeing are undoubtedly the following ones: a group of six Baroque fountains, Museum of modern art and Arcidiejeze museum, where you can take a look inside a Romanesque bishop palace. Archbishop palace is a next significant building in Olomouc. Since 1777 it has served as a residence of Olomouc bishops and archbishops and has been visited by a lot of important people. When the

emperor and king Ferdinand I. Dobrotivý surrendered his reign, the emperor František Josef I. ascended the throne here on 2nd December 1848.

During the tour around Olomouc you may notice many surviving military fortresses, which formed parts of a unique fortification as late as in 19th century; nowadays they are connected by a natural trail both for cyclists and hikers. A great tip for a short trip is a Basilica of the Visitation of the Blessed Virgin Mary on Svatý Kopeček, right next to the city. Nearby there is a ZOO with a shark aquarium, giant aviaries, a lookout and a rope adrenalin centre for children. For its atmosphere and historical sights Olomouc is very popular with international conferences and festivals.

We recommend three tours around Olomouc city, plot on a map below.



- 1st sightseeing tour - The Upper Square (Horní náměstí)
- 2nd sightseeing tour - The Lower Square (Dolní náměstí)
- 3rd sightseeing tour - to the Wenceslas Square (Václavské náměstí)



## Information centre Olomouc

Upper square - townhall arcade (Horní náměstí)  
779 11 Olomouc  
+420 585 513 385, +420 585 513 392  
[www.tourism-olomouc.cz](http://www.tourism-olomouc.cz)

## Tourist centrum, s. r. o.

Švédská 10, 772 00 Olomouc  
+420 585 222 138, +420 585 231 460  
[www.tourist-centrum.cz](http://www.tourist-centrum.cz)



## The Upper square - purple trail (Horní náměstí)

### Holy Trinity Column (Sloup Nejsvětější Trojice)



The Holy Trinity Column in Olomouc is a Baroque monument built between 1716 and 1754. The main purpose was to celebrate the Catholic Church and faith. People at time were grateful for ending the plague, which struck Moravia between 1714 and 1716. The column can also be understood as an expression of local patriotism, since all artists and master craftsmen working on this monument were Olomouc citizens. What is more, almost all depicted saints were connected with the city of Olomouc in some way. With its 35 metres it is the biggest Baroque sculptural group in the Czech Republic, inside there is a small chapel.

[www.unesco-czech.cz](http://www.unesco-czech.cz)

### Edelmann Palace (Edelmannův palác)

A Renaissance town house, in the design of a palace, in the Upper Square (Horní náměstí).

## The Lower Square - orange trail (Dolní náměstí)

### Marian Plague Column (Mariánský morový sloup)

Between 1715 and 1723 the column was built by Václav Rindl, as a gratitude of Olomouc citizens for plague ending, which struck Moravia between 1714 and 1716.

### Jupiter Fountain (Jupiterova kašna)

Jupiter Fountain was built as the last one from the group of Olomouc Baroque fountains. Since 1735 it has decorated the Lower Square.

### Town Hall with an Astronomical Clock (Radnice s orlojem)

The Gothic town hall built in 1378 is typical for its Gothic-renaissance tower 75 m high, Gothic corridors, a large hall, St. Jeronym chapel, Gothic chapel oriel in the south part and a fountain Hygie in the west side. The astronomical clock is a part of a north townhall wall and was built in 15th century. Its present appearance comes from Karel Svoboda who made it in the spirit of Socialist Realism. Olomouc astronomical clock is one of the heliocentric astronomical clocks that are very rare in the world.

### St. Maurice's Church (Chrám svatého Mořice)

St. Maurice's Church is a late Gothic church with two asymmetrical towers and arched triple-nave. Inside there are church organs, the 7th largest in Central Europe. Their author was an organist Michael Engler.

Opletalova 10, Olomouc, tel.: +420 585 223 179,  
[www.moric-olomouc.cz](http://www.moric-olomouc.cz)

## A Group of Olomouc Baroque Fountains

The most famous and artistically most demanding Olomouc fountain is The Caesar Fountain. Its sculptures represent the mythical city founder - emperor Julius Caesar. On the other hand, Merkur Fountain, built in 1727, is regarded to have the highest artistic quality. In the Upper Square, in front of the astronomical clock, there is Herkules Fountain, the second oldest Olomouc fountain. On the other side of the town hall you can see Arion Fountain, built in 2002 during the reconstruction of the Upper Square. Thus the group of Olomouc Baroque fountains inspired by ancient mythology became complete.



### Neptun Fountain (Neptunova kašna)

It was built in 1683 as a part of a unique group of Baroque fountains with ancient motives.



## To the Wenceslas Square - green trail

### St. Michael's Church (Chrám svatého Michala)



Three cupolas of the Baroque Church of St. Michael form one of the dominant features of the city. Between 1673 and 1686 it was rebuilt into a present appearance of early Baroque according to the project of G. P. Tencalla.

*Žerotínovo nám. 1, tel.: +420 585 223 915, +420 603 282 975, [www.svatymichal.cz](http://www.svatymichal.cz), open from dawn till dusk*

### Chapel of St. John Sarkander (Kaple sv. Jana Sarkandra)

Neo Baroque Chapel of St John Sarkander is a building with two floors roofed by a cupola with a lantern. In the middle of the prayer room there is a round opening into a basement, where you can see the rack from the time Sarkander lived.

*Na Hradě, tel.: +603 282 975, [www.svatymichal.cz](http://www.svatymichal.cz)*

## Next sights out of sightseeing tours

### Hradisko Monastery (Klášterní Hradisko)

Some elements of the building are very significant, for instance stucco and painting decorations of a monastery library vault. On the first floor there is a ceremony room.

*Sušilovo nám. 5, tel.: +420 973 407 208, +420 602 965 662, [www.vnol.cz](http://www.vnol.cz), guided tours: April - September, each first Saturday of the month 09:00, 10:00 and 11:00, each Thu 14:00 and 15:00*

### Theresian Gate (Terežská brána)

A Baroque gate was built between 1752 and 1753. It got its name in honour of Maria Thereza who visited Olomouc.

### Villa Primavesi (Vila Primavesi)

A famous Art Nouveau villa is situated in a garden above the city walls and is sensitively incorporated into a historic city centre. Today there is a restaurant and a gallery.

*Univerzitní 7, Olomouc, tel.: +420 585 204 852, [www.vilaprimavesi.cz](http://www.vilaprimavesi.cz)*

### Jesuit Convict with the Chapel of Corpus Christi (Jezuitský konvikt s kaplí Božího těla)

The art centre of Palacky University is located in the building of the Baroque Jesuit convict.

*Univerzitní 3, Olomouc, tel.: +420 585 633 099*

### Church of the Virgin Mary of the Snow (Kostel Panny Marie Sněžné)

This Baroque one-nave church is a part of a complex of former Jesuit school buildings.

*Denisova, Olomouc, tel.: +420 585 549 256, open Mon - Sat 9.00-18.00, Sun 12.00-18.00*

### Triton Fountain (Kašna Tritonů)

Triton Fountain was created after a city fire in 1707 and belongs to the group of Olomouc Baroque fountains.

### Olomouc Castle with St. Wenceslas Cathedral (dóm sv. Václava) and Roman bishop palace

The last man of Přemyslid dynasty, Czech King Vaclav III. was murdered here in 1306.

*Václavské náměstí, Olomouc, tel.: +420 585 514 190, [www.olmuart.com](http://www.olmuart.com)*

### Fortress Korunní Pevňůstka

Korunni pevnůstka is a protected historic building with an exposition of Olomouc fortification history. Inside you can find an interactive museum of science intended for all families called A fortress of knowledge (Pevnost poznání)

*Třída 17. listopadu 7, Olomouc, tel.: +420 724 443 848, [pevnostolomouc@seznam.cz](mailto:pevnostolomouc@seznam.cz), open: April - October Tue - Fri 9.00-17.00, Sat - Sun 11.00-17.00, November - March: after arrangement*

### Theresian Armoury (Tereziánská zbrojnice)

A massive late Baroque building is a typical demonstration of Theresian military architecture.

*Biskupské nám. 1, tel.: +420 585 631 111, Open - library Mon - Thu 8.00-22.00, Fri 8.00-19.00, Sat 9.00-16.00, a courtyard is open to the public during the day*

## Olomouc traditionally and untraditionally

### Ololod' and Ološlap (a cruise)



An excursion cruise Ololod' provides an unforgettable experience to Olomouc visitors and mainly to children. Untraditional experience is provided by Ološlap as well. Thanks to this you can get to know Olomouc from a different angle. Ološlap can be also used as a mobile beer bar for parties, celebrations, meetings or company parties.

*Tel.: +420 776 857 870, [www.plavbyolomouc.cz](http://www.plavbyolomouc.cz), [info@oloslap.cz](mailto:info@oloslap.cz)*

### Multimedia Guide OLINA

A pocket satnav with multimedia content shows the visitors around Olomouc and takes them to the most important sights and interesting places. Multimedia guide OLINA provides an attractive form of tourist navigation, hours of audiovisual records, thousands of pictures and tens of thousands of words in one portable gadget. Available as an application: [www.tourism.olomouc.eu/tourism/information-centre/multimedia-guide/cs](http://www.tourism.olomouc.eu/tourism/information-centre/multimedia-guide/cs)

### Cruises on Rafts Through Olomouc and a Nature Conservation Area Litovelské Pomoraví

*CK Peřej tours, tř. Svobody 39, Olomouc, tel.: +420 603 113 344, [www.perej.cz](http://www.perej.cz)*

### Olomouc in a Nutshell

This guided tour shows the most significant sights in the Upper Square. Visitors can go up the town hall tower, of course, with a commentary about the town hall and other Olomouc sights. Tickets available in an information centre in townhall arcade.

*Guided tours daily from 15/6 to 31/8.*

*Out of season after arrangement. For bigger groups, school trips, excursions etc. recommended to book in advance tel: +420 585 513 385 or e-mail [infocentrum@olomouc.eu](mailto:infocentrum@olomouc.eu).*

## Audioguide - Sights in Olomouc

Visitors who want to see Olomouc with a guide but still want to stay independent and keep their privacy can use an audioguide. It is available in five languages and can be borrowed in an information centre in a townhall arcade.

*Horní náměstí, Olomouc, tel.: +420 585 513 385, [infocentrum@olomouc.eu](mailto:infocentrum@olomouc.eu)*

## Tour around Olomouc with a Cat Ola

Children from 4 to 7 years old can see Olomouc sights in a very attractive way. Their guides will be a cat Ola and a tomat Zlobovous.

*Horní náměstí, Olomouc, tel.: +420 585 513 385, [infocentrum@olomouc.eu](mailto:infocentrum@olomouc.eu)*

## Going up the Townhall Tower in Olomouc

The dominant feature of the Upper Square, a 75 m high townhall tower, forms a part of a town hall and so is accessible through its inside area. Climbing up the tower is possible in summer from 15/6 to 31/8 six times a day during the tour Olomouc in a nutshell. Out of season from 1/9 to 14/6 twice a day, at 11am and 3pm via organized tours provided by an information centre.

*Information centre, Upper Square (Horní náměstí) - town hall, tel.: +420 585 513 385, +420 585 513 392*

## Olomouc on a Bike with a Guide

*Information centre, Upper Square (Horní náměstí) - town hall, tel.: +420 585 513 385, +420 585 513 392, [tourism.olomouc.eu](http://tourism.olomouc.eu)*

## Olomouc from a Raft

Favourite cruise on rafts through historical Olomouc enables you to get an unusual view of sights and parks of Olomouc. At first sight you will be attracted by rising towers of St Wenceslas Cathedral, Church of the Virgin Mary of the Snow, St. Michael's Church and a historical town hall.

*Dock Loděnice SKUP behind a sport hall, street U Sportovní haly 2a, [www.raftingmorava.cz](http://www.raftingmorava.cz)*

## Churches with a Guide

During the tourist season all important Olomouc churches and chapels are open daily 9:00 - 17:00.



**To the museum,  
to the countryside, to learn new things**

Basilica of the Visitation of the Blessed Virgin Mary

#### Arcidieze Museum Olomouc (Arcidiecézní muzeum Olomouc)



Arcidieze museum Olomouc is the only historic sight in the Czech Republic that has been awarded a prestigious title „European heritage“. It is the first museum of religious culture in the Czech Republic and so the visitors can admire exhibits from Czech religious history - old bibles, church coins, pictures of Olomouc archbishops, various religious objects, even a beautifully decorated carriage from the 18th century.

Václavské nám. 3, Olomouc, tel.: +420 585 514 175,  
open: Tue - Sun 10:00-14:00,  
each Wed and Sun free entry, [www.olmuart.cz](http://www.olmuart.cz)

#### Archbishop Palace (Arcibiskupský palác)

This palace serves as an official residence of Olomouc bishops and archbishops. In the building from the second half of the 17th century tours are possible - you can admire representative halls with their original rococo, empire and neo baroque decorations and original furniture.

Wurmova 9, Olomouc, tel.: +420 587 405 421,  
open: October - April Sat-Sun 10:00-17:00,  
May - September Tue-Sun 10:00-17:00,  
[www.arcibiskupskypalac.cz](http://www.arcibiskupskypalac.cz)

#### Basilica of the Visitation of the Blessed Virgin Mary (Bazilika minor Navštívení Panny Marie)

The Baroque pilgrimage church on Svatý Kopeček forms a dominant feature of the area around Olomouc. In May 1995 the church was promoted by the Pope Jan Pavel II. to a basilica.

Svatý Kopeček, tel.: +420 585 385 342,  
[www.svatykopecek.cz](http://www.svatykopecek.cz)

#### Holly Hill (Svatý Kopeček) and a ZOO

Svatý Kopeček belongs to the most attractive and most visited places for tourists in the Region. On the area of more than 40 hectares, a ZOO is located. There are more than 400 kinds of animals and a rope adrenalin centre for children inside the ZOO. Commentated feeding of animals is very popular, too.

Darwinova 29, tel.: +420 585 151 601,  
open: April - August 9:00- 18:00,  
March - September 9:00-17:00,  
October - February 9:00-16:00

#### Museum of Modern Art (Muzeum moderního umění)



It specializes in arts of 20th and 21th century. Both permanent expositions and temporary exhibitions of Czech and foreign modern art are to be seen here. As the only museum in the Czech Republic it is focused on collecting of so called author book.

Denisova 47, Olomouc, tel.: +420 585 514 111,  
open: Tue - Sun 10:00-18:00, each Wed and Sun free entry,  
[www.olmuart.cz](http://www.olmuart.cz)

#### Museum of National History and Science (Vlastivědné muzeum v Olomouci)

In April 2012 two new permanent expositions were opened - Nature of Olomouc Region and 15 centuries of the city Olomouc, which tells us a story about the history of the city. In May 2013 an exposition A stone story was opened, focused on geology, archeology and lapidarium. Expositions are interactive and currently are regarded to be the most modern expositions of natural science in the Czech Republic.

Nám. Republiky 5, Olomouc, tel.: +420 585 515 111,  
open: April - September Tue - Sun 9:00-18:00,  
October - March Wed - Sun 10:00-17:00, [www.vmo.cz](http://www.vmo.cz)

#### Veteran Arena

Veteran arena in Olomouc is the largest museum of historical cars in the Czech Republic open to the public. On the area of more than 2000 m2 you can admire more than 100 cars and other exhibits. The most important and interesting part is a collection of Tatra cars.

Sladovní 3, Olomouc, tel.: +420 585 157 438,  
open: April - November Tue - Sun 10:00-17:00,  
[www.veteranarena.cz](http://www.veteranarena.cz)

#### Flora Olomouc

Flower exhibitions Flora Olomouc attract tens of thousands visitors every year. In spring, in summer and in autumn they can admire breathtaking flower bunches and decorations and presentations of the best florists not only from the Czech Republic but also from abroad.

Wolkerova 17, Olomouc, tel.: +420 585 726 111,  
[www.flora-ol.cz](http://www.flora-ol.cz)

#### Park Smetanovy sady - Greenhouses

These greenhouses belong to the biggest ones in the Czech Republic. You can see greenhouses with palms, cactuses, tropical and subtropical flowers here.

Tel.: +420 585 726 215, +420 605 560 608, +420 585 726 243,  
open: February 9:30-16:00 (only weekends),  
March Tue - Sun 9:30-16:00, April - October Tue - Sun 9:30-18:00,  
[www.flora-ol.cz](http://www.flora-ol.cz), [skleniky@flora-ol.cz](mailto:skleniky@flora-ol.cz)

#### Park Bezručovy sady - Botanical Garden

Botanical garden is situated in Korunní pevnůstka premises. You can look forward to a rosarium, alpinum, gardens of different nations and temporary expositions of annual plants.

Tel.: +420 585 225 566, open: April - October  
Tue - Sun 9:30-18:00, [www.flora-ol.cz](http://www.flora-ol.cz)

#### Fortress of Knowledge (Pevnost poznání)



This interactive museum of science presents natural and social science in a very attractive way. There are lot of games and interactive elements for you to try. Visitors can for instance enter a model of a brain, meet larger-than-life water animals, try giant brain teasers and puzzles or explore space in the planetarium. Workshops, ateliers, studios and a multipurpose hall form a part of the museum as well.

Tř. 17. listopadu 7, Olomouc, tel.: +420 585 634 145,  
open: Tue - Fri 9:00-17:00, Sat - Sun 9:00-18:00,  
[www.pevnostpoznani.cz](http://www.pevnostpoznani.cz)



## Culture, sport and gastronomy

### Moravian Theatre Olomouc (Moravské divadlo Olomouc)



This theatre has formed a constant Czech theatre since 1920. It consists of 4 parts: opera, operetta, play and ballet.  
Horní nám. 22, Olomouc, tel.: +420 585 500 500,  
[www.pokladna@mdol.cz](mailto:www.pokladna@mdol.cz)

### Moravian Symphony Orchestra (Moravská filharmonie)

This orchestra belongs to the most significant and oldest symphony orchestras in the Czech Republic. It participates in organizing Dvořákova Olomouc - a music festival.  
Horní nám. 23, Olomouc, tel.: +420 585 206 520, [www.mfo.cz](http://www.mfo.cz)

### Theatre Divadlo „Na cucky“

An independent theatre with its own stage.  
Dolní nám. 42, Olomouc, tel.: +420 728 180 478,  
[www.divadlonacucky.cz](http://www.divadlonacucky.cz)

### Music Theatre (Divadlo hudby)

This Music theatre is regarded to be a house open for meetings and a wide range of productions: you can come and enjoy technically difficult performances of contemporary dance, chambre theatres, film projections or concerts of various genres.  
Denisova 47, Olomouc, tel.: +420 585 514 241,  
[www.olmuart.cz/divadlo-hudby](http://www.olmuart.cz/divadlo-hudby)

### Art Centre (Umělecké centrum)

Art centre of Palacký University is intended to be not only a department of education and research but is also participating in cultural and artistic life of the city. Films, theatre performances, concerts and exhibitions are organised here.  
Univerzitní 3, Olomouc,  
tel.: +420 585 633 099, +420 733 690 786,  
[www.upol.cz/umelecke-centrum](http://www.upol.cz/umelecke-centrum)

### Theatre Tramtárie (Divadlo Tramtárie)

An independent theatre.  
Hynaisova 11, Olomouc, tel.: +420 777 703 946,  
[www.divadlotramtarie.cz](http://www.divadlotramtarie.cz)

### Clown's Kingdom - Puppet Theatre (Kašpárkova říše)

An amateur puppet theatre.  
Slovanský dům, Hynaisova 11, Olomouc,  
tel.: +420 585 417 960, [www.kasparkovarise.cz](http://www.kasparkovarise.cz)

### Aquapark Olomouc



Offers interesting adrenaline and relaxing water attractions, rest area, massages and a solarium.  
Kafkova ulice, Olomouc, tel.: +420 588 517 770-1,  
[info@aqua-olomouc.cz](mailto:info@aqua-olomouc.cz), [www.aqua-olomouc.cz](http://www.aqua-olomouc.cz),  
SUMMER from 1/6 to 31/8 - inside Mon - Sun 9:00-21:00,  
outside - June 10:00-18:00, July - August 9:00-19:00,  
WINTER Mon 14:00-22:00, Tue - Fri 10:00-20:00,  
Sat, Sun and bank holidays 9:00-20:00

### Swimming Pool (Plavecký stadion)

Legionářská 11, Olomouc, tel.: +420 585 427 181,  
+420 585 427 208, open January - June, September - December Mon - Fri 6:00-21:00, Sat - Sun 9:00-21:00, July - August Mon - Sun 9:00-20:00, [www.olterm.cz](http://www.olterm.cz)

### St Wenceslas Beer Spa (Svatováclavské pivní lázně)

The spa was founded in a minibrewery of St Wenceslas (Svatováclavský pivovar) in autumn 2010. You can relax and taste the local beer at the same time. The most favourite kinds of beer are Vašek, Svatováclavská 12°, dark beer of Mr. Bruno 13° or cherry beer 13°. You can try all these kinds of beer lying in wooden baths full of beer foam.  
Mariánská 4, tel.: +420 585 242 219,  
open daily 14:00-22:00, [www.svatovaclavsky-pivovar.cz](http://www.svatovaclavsky-pivovar.cz)

### Balneo - Spa Flora Olomouc

Hotel Flora Olomouc, Krapkova 34, tel.: +420 702 003 963,  
e-mail: [balneoolomouc@seznam.cz](mailto:balneoolomouc@seznam.cz),  
[www.laznefloraolomouc.cz](http://www.laznefloraolomouc.cz)

### Horka nad Moravou - Natural Swimming Pool Poděbrady

Tel.: +420 734 384 635, [www.areal-op.be-life.cz](http://www.areal-op.be-life.cz),  
e-mail: [info@olomouckepodebrady.cz](mailto:info@olomouckepodebrady.cz)

### Minibrewery and Steakhouse Riegrovka



Riegrova 22, Olomouc, tel.: +420 608 305 850, open:  
Mon - Tue 11:00-23:00, Wed - Thu 11:00-24:00, Fri 11:00-01:00,  
Sat 11:00-01:00, Sun 11:30-22:00, [www.riegrovka.eu](http://www.riegrovka.eu)

### Publican Brewery Moritz (Hostinský pivovar Moritz)



Nešverova 2, Olomouc, tel.: +420 585 205 560,  
open: Sun - Thu 11:00-23:00, Fri - Sat 11:00-24:00,  
[sladekmoritz@hostinec-moritz.cz](mailto:sladekmoritz@hostinec-moritz.cz)

### St Wenceslas Brewery (Svatováclavský pivovar)

Mariánská 4, Olomouc, tel.: +420 585 207 517, open:  
Mon - Tue 09:00-23:00, Wed - Fri 09:00-24:00, Sat 11:00-24:00,  
Sun 11:00-22:00, [www.svatovaclavsky-pivovar.cz](http://www.svatovaclavsky-pivovar.cz)

### Brewery Chomout (Pivovar Chomout)

Dalimilova 92, Olomouc, tel.: +420 604 353 469,  
open: Tue - Thu 11:00-22:00, Fri - Sat 11:00-24:00,  
Sun 11:00-20:00, Mon 11:00-14:00,  
e-mail: varime@pivochomout.cz

### Salt Cave Solana

tř. 8. května 11, Olomouc, tel.: +420 585 204 290,  
www.solana.cz

### Omega Sport Centre

Squash, badminton, sauna, tennis, fitness and adventure golf.  
Legionářská 19, Olomouc, tel.: +420 585 205 700,  
+420 585 205 800, open daily 6:00-23:00,  
e-mail: info@omegasport.cz

### Rope Centre Proud (Lanové centrum Proud)



Na Střelnici 48, Olomouc, tel.: +420 605 215 348,  
open: July - August daily 14:00-20:00,  
www.lanovecentrum.cz

### Minigolf - MGC Olomouc

Olomouc City, Pražská 41, tel.: +420 603 530 586,  
open daily 10:00-20:00, www.minigolfolomouc.cz

### Rope Park Veverák (Lanový park Veverák)

This adventure rope park offers 47 obstacles divided into 3 trails both for kids and adults.

Svatý Kopeček u Olomouce, tel.: +420 773 788 529,  
open: April - May Sat, Sun and bank holidays 10:00-17:00,  
June Sat - Sun 10:00-18:00, July - August daily 9:00-18:00,  
September - October Sat - Sun 10:00-18:00,  
email: info@veverak-kopecek.cz

### BEST Sport Centre (BEST sport centrum)

Offers 6 professional bowling alleys, 2 squash courts and a fitness centre.

Dolní hejčínská 36, Olomouc, Nová Ulice,  
tel.: +420 773 313 314, open: Mon - Thu 08:00-22:00,  
Fri 08:00-00:00, Sat 09:00-00:00, Sun 09:00-22:00,  
www.best-sportcentrum.cz

### Paintball Game Olomouc



tř. Míru 120, Neředin, Olomouc, tel.: +420 776 713 600,  
booking required, e-mail: pgo@pgo.cz, www.pgo.cz

### Lamborghini Kart Arena

Hanáckého pluku - above-ground garages, 11th floor,  
tel.: +420 604 559 552, www.motokary-olomouc.cz

### Bowland Bowling Center Olomouc

Galerie Šantovka, Polská 1, Olomouc, tel.: +420 730 892 285,  
open: Mon - Thu 11:00-23:00, Fri 11:00-24:00,  
Sat 09:00-24:00, Sun 09:00-22:00,  
e-mail: bowling@bowland-center.cz

## Regular events Olomouc

### March

**One World (Jeden svět)** - international festival of film documentaries, www.jedensvet.cz

**FOR MODEL** - exhibition of models, Flora Olomouc, www.flora-ol.cz

### April

**Musica Religiosa** - festival of religious and spiritual music, www.festamusicale.com

**Academia Film Olomouc** - international festival of popular science films, Metropol cinema, www.afo.cz

**Easter Craft Fair in ZOO Olomouc (Velikonoční jarmark v ZOO Olomouc)**, www.zoo-olomouc.cz

**Olomouc Festival of Tvaruzky (Olomoucký tvarůžkový festival)**, www.tvaruzkovyfestival.olomouc.eu

**Flora Olomouc** - international gardening exhibition and a fair - spring period

**Discussions of Ecological Days (Besedy ekologických dnů)** - a traditional weekend full of discussions about the relationship between a human and nature, www.slunakov.cz

### May

**Feast Days of Olomouc City (Svátky města Olomouce)** - www.olomouc.eu

**Ecological Craft Fair (Ekojarmark)** - the Upper Square, traditional handicrafts, exhibitions, cultural programmes, life alternatives

**Theatre Flora (Divadelní Flora)** - international theatre festival, www.divadelniflora.cz

### June

**Festival of Songs (Svátky písní)** - international festival of choirs, www.festamusicale.com

**Among Us + Confession to Roses (Mezi námi + Vyznání růžím)** - exhibition of a healthy lifestyle, active seniors, relaxation, sport, movement, spa and wellness

**Moravia Sport Expo** - Flora Olomouc, www.flora-ol.cz

**Beerfest Olomouc** - www.pivnifestival.cz

**Feast Days of Olomouc City (Svátky města Olomouce)** - celebrations of city history, www.olomouc.eu

**Olomouc 1/2marathon (Olomoucký 1/2maraton)**, www.olomouckypulmaraton.cz

**Fair of Science and Research (Veletrh vědy a výzkumu)** - Park Bezručovy sady, attractive presentations of science and research activities of Palacký University faculties, www.pevnostpoznani.cz

**Garden Food Festival**, www.gardenfoodfestival.cz



### July - August

**Olomouc Baroque Summer (Olomoucké barokní léto)**, www.ensemledamian.com

### August

**Flora Olomouc** - international gardening exhibition and a fair - summer period, www.flora-ol.cz

**Marshal Radecký Celebration (Oslava Maršála Radeckého)** - celebrations with a parade of military brass music, www.radecky.eu

### September

**Days of European Heritage (Dny evropského dědictví)** - open days of sights, exhibitions, a craft fair, cultural programme in the Upper Square, www.olomouc.eu

**St Wenceslas Walk to the Forest (Svatováclavská vycházka na houby)** - intended to all lovers of mushroom picking, www.slunakov.cz

**Night of Scientists (Noc vědců)** - faculty of natural science of Palacký University, the biggest event to support science and technology in all Europe

**Festival of Light and Videomapping (Festival světla a videomappingu)** - competition in projections of European videomapping teams and light design show, www.vzari.cz

### October

**Flora Olomouc** - exhibition of fruit and vegetable - autumn period, www.flora-ol.cz

**OLIMA** - festival of gastronomy and beverages, www.flora-ol.cz

**Living (Bydlení)** - fair of furniture, interior furnishings and lifestyle, www.flora-ol.cz





Sluňákov



## Slatinice

Tourist centre Slatinice  
Slatinice 29, 783 42 Slatinice  
+420 585 944 599, [www.tc-slatinice.cz](http://www.tc-slatinice.cz)

## Horka nad Moravou

Tourist information centre  
and ecological counselling Sluňákov  
Skrbeňská 669/70, 783 35 Horka n. M.  
+420 585 154 711, [www.slunakov.cz](http://www.slunakov.cz)



## Spa Slatinice (Lázně Slatinice)

Middle mineralized water spring with hydrogen sulphide is used for healing procedures. Musculoskeletal system, circulatory system, nervous system, dermatological problems and oncological illnesses are cured here.

Slatinice 29, tel.: +420 581 571 000, [www.lazneslatinice.cz](http://www.lazneslatinice.cz)

## Slatinice - Veteran Museum (Muzeum veteránů)

On the area of 400 m2 you can find a collection of old cars, motorbikes and artefacts mainly from the 30s of the last century.

Slatinice 2, tel.: +420 725 379 083, +420 585 429 077,  
open: June - September Mon - Fri 10:00 - 18:00,  
Sat - Sun 10:00 - 19:00, October - May Mon - Sun 10:00-17:00,  
[www.veteranmuseum.cz](http://www.veteranmuseum.cz)

## Health Centre Bohuňovice (Centrum zdraví)

You can enjoy a water zone (swimming and relaxation pool, hydromassage whirlpool bath, upstream), steam sauna or a water slide. A bar in the water and a swimming pool for children are available too.

ul. 6. května 616, Bohuňovice, tel.: +420 585 151 731  
[www.centrum-zdravi-bohunovice.cz](http://www.centrum-zdravi-bohunovice.cz)

## Příkazy - Haná Folk Open-Air Museum (Hanácké skanzen)



If you want to see original Haná village architecture, visit this village conservation area Příkazy. You can find an original Haná pub here, a collection of toys, agricultural tools and machines and demonstrations of some crafts.

Příkazy 54, tel.: 585 967 310, +420 776 576 598,  
open: May Sat - Sun 10:00-16:00, July - August Tue - Sun  
10:00- 17:00, September Tue - Sun 10:00-16:00,  
[www.hanackeskanzen.cz](http://www.hanackeskanzen.cz)

## Fun Park Hlubočky

In the park you can enjoy off-road mini cars, quad bikes, Humber H1 a H2, a bike park, children will definitely like a playground. For the off-road mini cars there is a track about 600 m long. In the bike park the tracks are made of wood and soil. In this Fun park you can also try the longest bobsleigh track in Moravia, which is 1536 m long.

Školní 126, Hlubočky, tel.: +420 775 771 077,  
open: May, June, September Fri 14:00-19:00, Sat-Sun 11:00-19:00,  
July - August daily 10:00-19:00, October Fri 14:00-18:00,  
Sat 11:00-18:00, Sun 11:00-17:00, [www.funparkhlubocky.cz](http://www.funparkhlubocky.cz)

## Sport Park Hrubá Voda

The park offers a family bobsleigh track, horseriding, disc-golf, minigolf, bungee trampolines, archery, multipurpose playground, two restaurants with small playrooms for children and children menu, saunas, massages and other hotel services.

Hrubá Voda 21, tel.: +420 585 100 404-406,  
[www.hrubavoda.cz](http://www.hrubavoda.cz)

## Dub nad Moravou - The Virgin Mary Pilgrimage Temple (Chrám Očišťování Panny Marie)

This Baroque temple is very attractive for pilgrims. It is connected to the legend about recovery, which can be read in temple documents written by a committee established by Olomouc bishop.

Brodecká 1, Dub nad Moravou, tel.: +420 581 571 000,  
[www.dubnadmoravou.cz](http://www.dubnadmoravou.cz)

## Golf Resort Olomouc

Golf players can use an 18-hole master golf course, par 72, with a lot of water and sand obstacles. There is also a 9-hole golf course open to the public, par 54, a driving range, a large putting green, chipping green and a clubhouse with a terrace.

Dolany-Věska 49, tel.: +420 581 112 911,  
+420 733 691 333, [www.golf-olomouc.cz](http://www.golf-olomouc.cz)

## Drahanovice - Strážov, Garden Mini Railway (Zahradní železnice)



In this garden railway you can see models of trains going round the garden full of trees and flowers.

Drahanovice-Strážov, tel.: +420 585 949 286, +420 604 246 932,  
open: weekends 10:00-12:00, 13:00-17:00, April - June  
even-numbered weeks, July - August every week,  
September - October even-numbered weeks,  
[info@zahradnizeleznice.cz](mailto:info@zahradnizeleznice.cz), [www.zahradnizeleznice.cz](http://www.zahradnizeleznice.cz)

## Hunting Cottage Horka nad Moravou (Lovecká chata)

A place ideal for trips. Offers a restaurant, horseriding, rope centre, minigolf, petanque, paintball, archery and quad bikes.

Vodní 6, Horka nad Moravou, tel.: +420 585 378 070,  
open: Tue - Sun 10:00-19:00, e-mail: [autodemont@volny.cz](mailto:autodemont@volny.cz)  
[www.autodemont.cz/cz/chata](http://www.autodemont.cz/cz/chata)

## TRAVEL TIP



Sluňákov - Offers ecological educational programmes focused on learning about nature. Children form their relationship to the nature and the desire to learn about it thanks to many games and interesting activities.

Skrbeňská 70, Horka nad Moravou,  
tel.: +420 585 378 345, +420 585 154 711  
information centre open daily 10:00 - 17:00 April - Sept.  
e-mail: [info@slunakov.cz](mailto:info@slunakov.cz), [www.slunakov.cz](http://www.slunakov.cz)

## Regular events

Velká Bystřice, [www.muvb.cz](http://www.muvb.cz)

April - Burning of witches and a maypole raising | Easter spring welcome | Palm Sunday | White stone - bicycle touring event, Libava, [www.akcebilykamen.cz](http://www.akcebilykamen.cz)

May - Festivities of folk costume + Farm days | Night of churches | Biketrial | Fishing contest

June - Hana Nashville - folk, country, bluegrass music | Memorial of Dr. Zdenek Kokta - national final of the competition in monologues and dialogues

August - Haná Woodstock - rock music | Summer white stone - bicycle touring event

Doloplazy

July - Ride of the Kings - folk festival

Hlubočky

May - Moravian fifty

June - Race Minikar klub | Tennis tournament of microRegion Bystřička

July - Folk na Letním

Práslavice

September - Práslavice emperor festival

Slatinice

March - Opening of spa season



Area Laguna in Přerov



## Town information centre

Náměstí T.G.Masaryka 8, 750 02  
+420 581 587 777  
mic@kis-prerov.cz, www.prerov.eu



## Town Přerov

The best view of the town Přerov is certainly from the chateau tower. In the town centre you can admire a Neo-renaissance town house with Art Nouveau elements. Various cultural events, for example a favourite jazz festival, are organized here. Right in the chateau you can find the oldest museum in the Czech Republic focused on pedagogy. Its name refers to the best teacher in Czech history, Jan Amos Komenský. Nature lovers should definitely visit a town park Michalov connected to a cycleway Bečva. The local ornithological station can boast about the biggest exposition of birds in all central Europe. Next to the Bečva river foundations of Unity of the Brethren trade centre were revealed, they also included a prayer room, preserved renaissance road and a house with a school, where Jan Amos Komenský was teaching from 1614.

## Předmostí u Přerova

„Through Předmostí to prehistoric times“ (Předmostím až do pravěku) that is a name of an educative nature trail showing you around the place where mammoth hunters were staying 25 thousand years ago. You can follow the blue sign, which shows you the way during an 8 km long trail with 9 stops. The trail starts in the housing estates in Předmostí by a sculpture called „Probe into prehistory“ about 50m far from a cemetery. Next to the school in a basement there is in a small museum of mammoths with an authentic presentation of archeological found properties. The highest point of the trail is on a hill Čekyňský kopec. If you reach its peak, you will see a life-sized statue of a young mammoth.

Předmostí u Přerova, tel.: +420581 217 187, +420581 211 739, www.prerov.eu

## Komenský Museum (Muzeum Komenského)



Komenský Museum is regarded to be an important cultural centre of Přerov, at the same time it is the oldest museum of its kind in the world. It was founded by František Slaměník in 1888, a Town museum was set up in 1920. You can visit not only various temporary exhibitions but also permanent expositions, e.g. of archeology, entomology, mineralogy, ethnography of Haná and Záhoří and Přerov Region in revolt 1914-1989.

Horní náměstí 7, Přerov, tel.: +420 581 250 531

open: Tue - Fri 08:00-17:00, Sat - Sun 09:00-17:00

## Brewery Zubr (Pivovar Zubr)

Beer has been brewed and drunk in Přerov for almost thousand years. The brewery was set up in the 70s of the 19th century. Excursions are for free, however, must be booked in advance (groups of min. 10 people)

Komenského 35, Přerov, tel.: +420 581 270 111,

Mon - Fri 08:00-14:00, www.zubr.cz

www.prerovmuzeum.cz

## Carillon and a Bell Workshop Brodek u Přerova (Zvonkohra a zvonářská dílna Brodek u Přerova)

Carillon is a piece of art that has been created in a world famous workshop of a bellfounder Marie Dytrychova-Tomášková. It can be sounded both manually and via computer. The carillon consists of 22 bells. The smallest bell weighs 20 kg, the biggest one 220 kg. The bells are hung up in a circle on a metal construction that also has a shape of a bell. This world famous bell workshop in Brodek u Přerova was founded by Josef Dytrych, a former aviation mechanic. After his death, his wife Laetitia and his daughter Marie went on in the tradition. Gradually, also academics have been involved in the bell production. Several thousands of bells made in this workshop can be seen not only in the Czech Republic but also in Japan, USA, Austria, Hungary, Ukraine, Slovakia and even in a Pope's residence in Vatican.

Štefánikova 196, Brodek u Přerova, tel.: +420 581 741 367, www.zvony-tomaskova.cz

## ORNIS

ORNIS represents an abbreviation for a department of natural history of Přerov museum, focused on ornithology. In the permanent exposition „Birds of the Czech Republic“ you can see almost 400 kinds of birds occurring in the Czech Republic. From October to April you can visit a seasonal exhibition of natural history. Last years topics were e.g. „Touch the bird“ or „Trees as houses“.

Bezručova 10, Přerov, tel.: +420 581 219 910,

open: all year Mon - Fri 08:00-16:00,

April - October Sat - Sun 09:00-17:00

## TRAVEL TIP



**Town Trail in Přerov „Cultural Heritage“ (Městská trasa v Přerově „kulturní dědictví“)** - Set off on a walk. Not a demanding walk, only about 2,5 km long. It starts next to a bus station in Přerov. From this place you will go on, pass an evangelical church and a statue of J.A.Komenský and go to Zubr Brewery. In front of St Michael's Church turn to Žerotínovo square

to a former synagogue, today an Orthodox church of St Cyril and Methodius. Next the trail leads past St Vavřinec Church, Virgin Mary Chapel and the Town House, which is a cultural centre of the town, to T.G.Masaryk square. Along medieval town wall you will continue to the Upper Square (Horní náměstí) to the chateau, where Museum of J.A.Komenský is located. From a chateau tower you will get a beautiful view of the town.

## TRAVEL TIP



**Area Laguna in Town Přerov (Areál Laguna v Přerově)** - is located on a right bank of Bečva river next to the nature reserve Žebračka. The area is a very pleasant place, where visitors can spend all day doing sport as well as relaxing. There are vast bodies of water, a wooden playground, volleyball courts, a skatepark and a bike trail. Visitors can refresh themselves at a kiosk. The area is crossed by an educative nature trail with information boards about local fauna and flora.

## Regular events

**Přerov, www.prerov.eu, www.kis-prerov.cz**

**April** - Czechoslovak jazz festival (www.mu-prerov.cz) | Matějský jazz funfair (www.csjf.cz)

**May** - Beer festival in Přerov (www.vystavisteprerov.cz) | Children Author Šela Marathon (www.selasport.cz) | Mammoth Tour - Bike (www.miko-cycles.cz) | Beer festival (festival of goulash and beer with music programme, www.vystavisteprerov.cz)

**June** - Folk festival In the chateau and around (www.hanaprerov.cz) | Zubrfest (www.zubrfest.cz)

**August** - festival of St Vavřinec | Přerov fifty

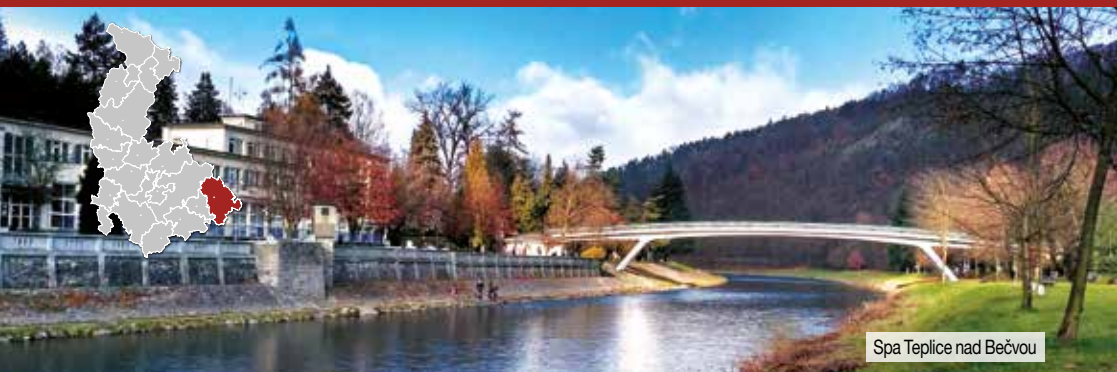
**September** - Go up your peak (walks around Přerov and its surroundings) | To see Přerov wisent | European heritage days Dřevohostice, www.drevohostice.cz | European night for bats (www.prerovmuzeum.cz)

**Dřevohostice, www.drevohostice.cz**

**July** - Meeting of brass music | Wood rockfest (www.drevorockfest.cz)

**August** - Dřevohostické folkaš Radslavice, www.radslavice.cz





Spa Teplice nad Bečvou



## Hranice

Tourist information centre  
Pernštejnské nám. 1, 753 01 Hranice  
+420 581 607 479, [www.mic.hranice.cz](http://www.mic.hranice.cz)



### Town Hranice

In Hranice you can walk along old alleys, a square and arcades of old town houses. If you want to see the town from a bird's eye view, climb the 38 m high tower of the Old town hall. Very interesting for the visitors is also a synagogue and a Jewish cemetery.

[www.mesto-hranice.cz](http://www.mesto-hranice.cz)

### Spa Teplice nad Bečvou (Lázně Teplice nad Bečvou)

Teplice nad Bečvou lies in Moravian Gate, in a hilly terrain with a breathtaking view. Spa Teplice nad Bečvou is specialized in cardio rehabilitation. Recently new salt caves have been opened here. They are suitable for all people with asthma and other lung diseases.

Tel.: +420 581 818 181, [www.ltnb.cz](http://www.ltnb.cz),  
e-mail: [lazne@ltnb.cz](mailto:lazne@ltnb.cz)

### Chateau Hustopeče nad Bečvou (Zámek Hustopeče nad Bečvou)

In Hustopeče nad Bečvou you can find a Renaissance chateau built in 1596 with the most beautiful arcade yard in Moravia. Currently renovators are working here, open are the following parts: Lapidarium, Butcher museum and Music and Film museum.

Hustopeče nad Bečvou, tel.: +420 581 626 111,  
open July - August Sat - Sun 14:00-17:00,  
e-mail: [posta@ihustopece.cz](mailto:posta@ihustopece.cz)

### Zbrašov Aragonite Caves (Zbrašovské aragonitové jeskyně)



Zbrašov aragonite caves lie in a charming valley of Bečva river near Teplice nad Bečvou spa resort. They form a unique cave system in all Europe. A mineral aragonite makes remarkable decorations inside.

Tel.: +420 581 601 866, open: Feb. - March Mon - Fri 10:00-14:00, April-June Tue-Sun 09:00-16:00, July-August Tue-Sun 09:00-17:00, Sept. - October Tue - Sun 09:00-17:00, November - December after arrangement, February and March entry at 10:00 and 14:00, bank holidays open,  
e-mail: [zbrasov@caves.cz](mailto:zbrasov@caves.cz), [www.caves.cz](http://www.caves.cz)

### Aquapark - Plovárna Hranice



Besides a common 25 m long swimming pool this aquapark offers a relaxing pool with attractions, a children swimming pool, a beach volleyball court, table tennis, a playground, a paddling pool, saunas, massages and a fitness centre.

Žáčkova 2042, Hranice, tel.: +420 581 606 666,  
open: OUTSIDE June 09:00-19:00, July-August 09:00-20:00, September according to weather,  
AQUAPARK Tue - Thu 14:00-21:00, Fri 15:00-21:00,  
Sat - Sun 09:00-21:00, [www.aquaparkplovarnahranice.cz](http://www.aquaparkplovarnahranice.cz)

### Town Potštát

The major sights of the town are: a historical square with a clock tower and a Baroque cupola and a local chateau.

[www.potstat.cz](http://www.potstat.cz)

### Water and wind energy usage

#### Stráž nad Ludinou - Humplík's Water Mill, Museum of Minerals (Humplíkův vodní mlýn, Muzeum minerálů)



In the village there is a small museum of minerals with a permanent exposition of Moravian Gate minerals and semi-precious stones. Humplík water mill with a mill wheel and an original mill room is also worth visiting. Guided tours possible for bigger groups, after arrangement.

Tel.: +420 581 607 479, +420 581 626 202, [www.strizezn.cz](http://www.strizezn.cz),  
[www.hranicko.eu](http://www.hranicko.eu)

### Poruba - Windmill of a Dutch Type

A brick wind mill of a Dutch type, built in 1853, is a unique technical sight. It is located in Poruba, a part of Hustopeče nad Bečvou. [www.ihustopece.cz](http://www.ihustopece.cz)

### Partutovice - Maršálek's Windmill (Maršálkův větrný mlýn)

In this mill, built in 1837, flour was milled up to 1941. It has been reconstructed many times and is in working order again today.  
Tel.: +420 581 625 293, [www.hranicko.eu](http://www.hranicko.eu),  
open after arrangement

### Skalička - Červenka's Mill (Červenkův mlýn)

A windmill in working order built at the beginning of the 19th century in Dřevohostice. After 1850 it was transported to Skalička. Accessible after arrangement.

Tel.: +420 736 180 770, +420 731 226 025,  
[www.povetnik.cz](http://www.povetnik.cz), open after arrangement,  
[www.obecskalicka.cz](http://www.obecskalicka.cz), [www.hranicko.eu](http://www.hranicko.eu)



## TRAVEL TIP



**Hranice Abyss (Hranická propast)** - The abyss is located in Hranice karst not far from Zbrašov aragonite caves. According to the measurements, it is regarded to be the deepest flooded cave in the world. To Hranice abyss you can get following a nature trail „Through a national nature reserve Hůrka“ next to Hranice. Tel.: +420 581 601 866, +420 581 607 479,  
[www.hranickapropast.cz](http://www.hranickapropast.cz)

### Regular events

**Hranice, [www.mkz-hranice.cz](http://www.mkz-hranice.cz)**

**April** - European jazz days, Chateau club, Concert hall, theatre

**June** - Hranice rockfest | Hranice stage, Open-air cinema

**August** - Rock Drey Fest, festival of revival bands

**October** - Day of culture in Rouske chateau

**July** - BESTFEST summer, festival in village Rouske



## Lipník Region



Helfštýn castle



### Lipník nad Bečvou

Tourist information centre  
nám. T. G. Masaryka 13  
751 31 Lipník nad Bečvou  
+420 581 773 763  
+420 731 640 848  
[www.mesto-lipnik.cz](http://www.mesto-lipnik.cz)



### Town Lipník nad Bečvou

A town conservation area Lipník nad Bečvou attracts visitors thanks to its historical centre, town houses and Jewish sights. Besides a synagogue, which is the second oldest in the Czech Republic, you can see a Gutmann's foundation house, Jewish cemeteries and a chateau with a unique roof garden.

*Guided tours: May - September daily except for Monday at 10:00 and 14:00, tours are free,  
[www.mesto-lipnik.cz](http://www.mesto-lipnik.cz)*

### Karting Arena Lipník nad Bečvou

In the company Strojtoš premises you can find a multipurpose sport park with a tarmac circuit. You can hire a safest French go-cart Sodikart. On the track there are 3 magnetic loops, a timer with a big light board and night lighting.

*Loučská 503, Lipník nad Bečvou,  
tel.: +420 602 542 140,  
open: Mon - Fri 13:00-21:00, Sat - Sun 10:00-21:00,  
email: [info@kartingarena.cz](mailto:info@kartingarena.cz)*

### Helfštýn Castle (Hrad Helfštýn)

Helfštýn castle is one of the largest castles with probably the longest walls in the Czech Republic. During the tour you can visit an exposition of art smithery and a historical mint.

Every year about six hundred smiths from more than twenty countries come here to attend an international meeting of art smiths Hefaiston.

*Týn nad Bečvou, tel.: +420 581 797 093, guided tours 22/3.-31/10 for groups of more than 8 people, [www.helfstyn.cz](http://www.helfstyn.cz)*



## TRAVEL TIP

**Walking in a chateau park Veselíčko** - The chateau park in Veselíčko is situated on the area of 5,4 hectares and was created in a French and English style. Architecturally, historically and botanically it belongs to the most valuable parks in Central Moravia.

**Walking along Študent trail in Bohuslávky (Procházka Študentovou stezkou v Bohuslávkách)** - The nature trail starts west from a village Bohuslávky by an old oak. Thanks to five information boards you can learn about the local fauna, flora and a forest life.

## Regular events

**Lipník nad Bečvou, [www.mesto-lipnik.cz](http://www.mesto-lipnik.cz)**

**May** - Author Šela marathon, marathon for cyclists, [www.selasport.cz](http://www.selasport.cz)

**June** - Zahorske festival, show of folk ensembles and a craft fair, [www.svclipnik.cz](http://www.svclipnik.cz)

**June** - September - Metal in the town, exhibition of metal sculptures

**July** - St Jacob festival, a three-day multigenre programme

Hrad Helfštýn, [www.helfstyn.cz](http://www.helfstyn.cz)

**May** - Festival of military history | Helfštýn circuit, historical car race, [www.oldtimer-helfstyn.cz](http://www.oldtimer-helfstyn.cz)

**June** - Rock Helfštýn | Dogs on Helfštýn

**July** - Castle ball | Helfštýn festival

**August** - Hefaiston, international meeting of art smiths

## Prostějov Region



Chateau in Čechy pod Kosířem



### Regional information centre

Pernštýnské nám. 176/8  
796 01 Prostějov  
+420 582 329 723, [www.prostejov.eu](http://www.prostejov.eu)

### IC Plumlov castle

Zámecká 99, 798 03 Plumlov  
+420 588 882 662, [www.plumlovsko.cz](http://www.plumlovsko.cz)



### Museum of Prostějov Region (Muzeum Prostějovska)

In the museum you can see four permanent exhibitions: Prehistory of Prostějov Region, Geology, Jiří Wolker exposition and exposition Clocks and watches.

*Nám. T. G. Masaryka 2, Prostějov, tel.: +420 582 330 991,  
open: Tue - Sat 9:00-12:00 and 13:00-17:00, Sun 9:30-12:00  
and 13:00-17:00, [www.muzeumpv.cz](http://www.muzeumpv.cz)*

### Town Prostějov

Prostějov attracts every visitor by its beautiful square, a unique town hall and the Art Nouveau National House built according to Jan Kotěra's draft. A townhall tower has been reconstructed and is open to the public. The chateau with four wings and a beautiful portal is also worth seeing. Gradually the chateau has been completely reconstructed. One part of the interiors is used by a dance and theatre department of a local V.Ambros's Art School, in the east wing Regional information centre is situated. Besides culture, Prostějov is famous for its sport living. You can visit local Aquapark or Hotel Tennis Club with tennis courts, bowling and squash and many other sport facilities.

*Regionální informační centrum, Pernštýnské nám. 8,  
tel.: +420 582 329 723, [www.prostejov.eu](http://www.prostejov.eu)*

### Townhall Tower Prostějov

The townhall tower offers a breathtaking view of all town Prostějov and a vast surroundings. The tower is 66 m high, whereas the main inner lookout is 46 m high.

*Nám. T. G. Masaryka 12-14,*

*tours: July - August*

*Mon - Thu 9:00, 10:00, 13:00, 14:00*

*Fri 9:00, 10:00, 13:00, Sat - Sun 13:00, 14:00, 15:00*

*tel.: +420 582 329 723, e-mail: [informace@prostejov.eu](mailto:informace@prostejov.eu)*

### National House (Národní dům)



National House in Prostějov is a significant cultural sight of the Czech Republic. As the first monumental building of Jan Kotěra it belongs to the gems of Czech and Moravian modern architecture of the 20th century. During the war it was unsensitively rebuilt and almost all decorative elements were removed from the theatre section - stucco decorations, giant lamps, brass lights and stained glass. In 1995 a programme for saving this cultural sight was established and so the building slowly started to gain its Art Nouveau beauty again, both theatre section and a restaurant with a café.

*Vojáčkovo nám.1,*

*tel.: +420 582 329 600, [www.narodni-dum.info](http://www.narodni-dum.info),*

*+420 582 329 603, [www.divadloprostejov.cz](http://www.divadloprostejov.cz)*



### Gallery Špalíček (Galerie Špalíček)

Permanent expositions devoted to Jews in Prostějov and a significant native of Prostějov Edmund Husserle.

Tel.: +420 725 875 008,  
open Tue - Sun 9:30-12:00 and 13:00-17:00,  
[www.muzeumpv.cz](http://www.muzeumpv.cz)

### Astronomical Observatory Prostějov (Lidová hvězdárna Prostějov)

Kolářovy sady, Prostějov, tel.: +420 582 344 130, otevřeno  
PO-PÁ 08:00-23:59, [www.hvezdarnapv.cz](http://www.hvezdarnapv.cz)

### Aquapark Koupelky

The outside part of this aquapark offers 3 swimming pools, a 100m-long water slide and a 20m-long triple slide. In the swimming pool you can enjoy artificial waves, a current and bubbles. For kids there is a playground with a climbing wall and a small swimming pool. Besides water sports you can play volleyball, basketball, foot volleyball and tennis here.

Krasická 6, Prostějov, tel.: +420 582 330 895,  
open: May - June Mon - Sun 10:00-19:00,  
July - August Mon - Sun 9:00-20:00, [www.dsp-pv.cz](http://www.dsp-pv.cz)

### Sportcentre Hotel Tennis Club

A sport centre connected to a hotel complex serves as a training place of professional tennis players, future tennis players and also amateur tennis players. The centre offers a lot of other sport activities, what is more, you can relax in a wellness centre. Za Kosteleckou 49, Prostějov, tel.: +420 582 402 509,  
open: Mon - Sun 07:00-23:00, [www.sportonline.cz](http://www.sportonline.cz)

### Jump - Tandem

Tel.: +420 724 175 175, aerodrome in Prostějov  
in the season Sat - Sun, e-mail: [tandem@jump-tandem.cz](mailto:tandem@jump-tandem.cz)

### Chateau Čechy pod Kosířem (Zámek Čechy pod Kosířem)

After an extensive reconstruction the chateau was again open to the public in April 2016. Inside you can admire a unique collection of Josef Manes's paintings. In the typical exposition visitors can take a look into the life of the last chateau owners. You can also see an untraditional exhibition of Zdeněk Svěrák and his son Jan Svěrák, where exhibits from several films which they have made together are displayed: Tmavomodrý svět - aeroplá-

ne models, Kuky - a larger-than-life car and Obecná škola - a blackboard, a school desk and a figure of a teacher Igor Hnízdo. Besides these stage properties you can watch films about these Svěráks' famous films, available are also film posters, scripts and outlines.

Čechy pod Kosířem, tel.: +420 773 784 110, +420 770 100 743,  
+420 722 928 494, open: CHATEAU April, October  
09:00-16:00, (weekends and bank holidays), May - September  
09:00-17:00 (Tue - Sun, bank holidays), PARK all year  
06.00-22.00, [www.zamekcechy.cz](http://www.zamekcechy.cz)

### Museum of Fire Brigade Čechy pod Kosířem (Hasičské muzeum Čechy pod Kosířem)

Museum of fire brigade in Čechy pod Kosířem shows the development of fire-fighting machinery in the oldest factory producing fire pumps in former Austria-Hungary. This factory was set up in 1820. In the museum you can admire the first easiest manual machines, pumps pulled by horses up to modern machines of very high performance running on petrol.

Náměstí Svobody 56, Čechy pod Kosířem,  
tel.: +420 582 373 726, open: April - October Fri, Sat, Sun  
June - August daily except for Monday 10:00-12:00 and  
13:00-17:00, [www.cechypk.cz/hasicske-muzeum/](http://www.cechypk.cz/hasicske-muzeum/)

### Museum of Historical Carriages (Muzeum historických kočárů)



The biggest museum of historical carriages in the Czech Republic shows history of carriages, their accessories and renovations. In the collections you can admire, besides others, an archbishop carriage, a funeral carriage, a lot of documents and drafts, details of saddleries and lanterns. This unique collection consists of 38 carriages made between 1750 and 1920. Carriages come from the Czech Republic, some also from abroad, where they were found forgotten in farms.

Náměstí Svobody 377, Čechy pod Kosířem,  
tel.: +420 608 610 324,  
open January - December 09:00-17:00, possible to book in  
advance, [www.historickekoecary.cz](http://www.historickekoecary.cz)

### Plumlov Dam (Plumlovská přehrada)



The largest dam in Central Moravia is very attractive to tourists and sportsmen. You can choose between two grass beaches, each provides boats and paddle boats to hire. This vast body of water is often used by water sport lovers. Every year a competition of dragon boats takes place here. In 2010 extensive restorations of Plumlov dam began, since 2014 swimming and bathing is possible again.

### Plumlov Chateau (Zámek Plumlov)



An impressive chateau attracts visitors by its atypical appearance and unique interiors. It was built by Jan Adam from Lichtenstein between 1680 and 1688. The building was supposed to have four wings with a rich decorated facade. Unfortunately, just one wing was finished and the building has never been occupied. 3 guided tours are available for the visitors, one of them shows rooms on the fifth and sixth floor and partly also the cellar, which have never been opened to the public. In summer many interesting cultural events are organized here.  
Tel.: +420 773 444 500, +420 774 302 165, open:  
April, October - weekends and bank holidays 13:00-18:00,  
May - weekends and bank holidays 10:00-18:00,  
June - September daily except for Monday 10:00-18:00,  
[www.plumlov-zamek.cz](http://www.plumlov-zamek.cz)

### Spa Skalka (Lázně Skalka)

Spa Skalka lies 8 km far from Prostějov. This spa is famous for its mineral springs with a unique element, sylvan, which cannot be found in any other mineral water in all Czech Republic. The spa resort was founded in 1928. Mainly rheumatic diseases and

diseases of musculoskeletal system are cured here. Experienced staff offers you rehabilitation procedures, in which local healing mineral water is used.

Skalka, tel.: +420 582 384 168, +420 721 783 119,  
open Mon - Sun 07:00-19:30, [www.lazneskalka.cz](http://www.lazneskalka.cz)

### Natural Park and a Lookout Velký Kosíř

The dominant feature of the natural park Velký Kosíř lying in the south-east part of Bouzovská vrchovina, is a hill of the same name - Velký Kosíř. It lies 442 m above sea level and so is the highest peak of Haná. At the top you can find a 28 m high lookout, which offers a beautiful view of all flatland Haná, hills of Dražanská vrchovina and also a silhouette of Nízký Jeseník.

Tel.: +420 582 373 726, +420 720 120 889,  
[www.rozhledna-kosir.cz](http://www.rozhledna-kosir.cz)

## TRAVEL TIP

**Bělecký Mlýn** resort is situated in a quiet area on the foothills of Dražanská vrchovina. It is an ideal place for trips, holiday with children, agrotourism and cycling. The resort Bělecký Mlýn offers a mini ZOO, fishing, horseriding, paintball, accommodation and a restaurant. Horseriding can be arranged, however, stables, paddock and experienced staff is in a Chateau near Bělecký Mlýn, not directly in the resort.

Tel.: +420 582 376 377, [www.beleckymlyn.cz](http://www.beleckymlyn.cz)

## Regular events

**Prostějov, [www.prostejov.eu](http://www.prostejov.eu)**

**March** - Young theatre - [www.klubduha.cz/mladascena](http://www.klubduha.cz/mladascena) | Amundsen cup - a competition for barmen | Easter in folk handicraft | Wolker's Prostějov - a Regional presentation of poetry, promotion to a countrywide poetry festival

**April** - Prostějov days of music

**May** Prostějov Gold needle (Zlatá jehla) - fashion design competition

**June** - UNICREDIT CZECH OPEN - international tennis tournament of men ATP | Wolker's Prostějov - countrywide festival of poetry | MEDart - presentation of Prostějov theatres | Prostějov summer 9+1 - music, creative, theatre and sport activities

**June** - September WORLD JUNIOR TENNIS FINAL - world championship of junior tennis teams (max. 14 year-old players)

**August** - Haná festival (Hanácké slavnosti) - festival of ensembles, craft fair

**July** - Celtic night

**Čechy pod Kosířem, [www.cechypk.cz](http://www.cechypk.cz)**

**August** - Veteran car rally From spa to spa - with a stop in a chateau park

## Konice Region



Chateau Konice



### Konice

Town cultural centre  
Kostelní 46, 798 52 Konice  
+420 582 334 987, [www.mekskonice.cz](http://www.mekskonice.cz)



#### Chateau Konice (Zámek Konice)

In a west wing of this Baroque building you can admire the most valuable part - a monks' dining room. Its ceiling is beautifully decorated by a precious fresco Dining of a Saint family. On the ground floor of the chateau there is a unique exposition of customs and handicrafts with many valuable exhibits and a big-gest axe collection in the Czech Republic.

Tel.: +420 582 334 987, +420 739 333 721, open:

all year Mon - Fri 09:00-12:00, 13:00-16:00,

1/6 -31/8 Sat 09:00-12:30, 13:00-17:00, Sun 14:00-17:00,

[www.muzeumkonice.cz](http://www.muzeumkonice.cz)

#### Sport Klub Hvozď

Sport Club Hvozď is located in the middle of Konice microRegion. Nearby there are many interesting places and sights, the scenery attracts hikers and cyclists thanks to its moderate hilly terrain. In winter you can go skiing in the ski resort Kladky.

Hvozď 9, tel.: +420 582 334 743, +420 727 867 005,

open: Mon - Thu 16:00-22:00, Fri 14:00-24:00,

Sat 10:00-24:00, Sun 10:00-21:00, [www.sportpenzion.cz](http://www.sportpenzion.cz),

e-mail: [pvsportklub@seznam.cz](mailto:pvsportklub@seznam.cz)

#### Natural Park Kladecko, Nature Trail

A nature trail Kladecko leads through a park of the same name. It starts at a train stop in Šubířov and finishes in a village Jesenec. The trail is 6,5 km long, is not very difficult and is suitable both

for hikers and cyclists. Rare and endangered species of plants and animals can be found in this area.

Tel.: +420 582 334 987, +420 739 333 721,

[www.konice.cz](http://www.konice.cz), [www.ok-tourism.cz](http://www.ok-tourism.cz)



### TRAVEL TIP



**Balloon flights Konice (Lety balónelem Konice)** - You can see all the beautiful places around from the bird's eye view - a fairytale castle Bouzov, chateau Náměšť na Hané, valley of Malá Haná, Dražanská vrchovina and many other interesting places.

Tel.: +420 602 852 904, +420 775 992 020,

[www.balonykonice.cz](http://www.balonykonice.cz)

#### Regular events

**Konice, [www.konice.cz](http://www.konice.cz)**

**June** - Car race, Konice - Březský vrch, uphill car race | Traditional Konice festival, Masarykovo

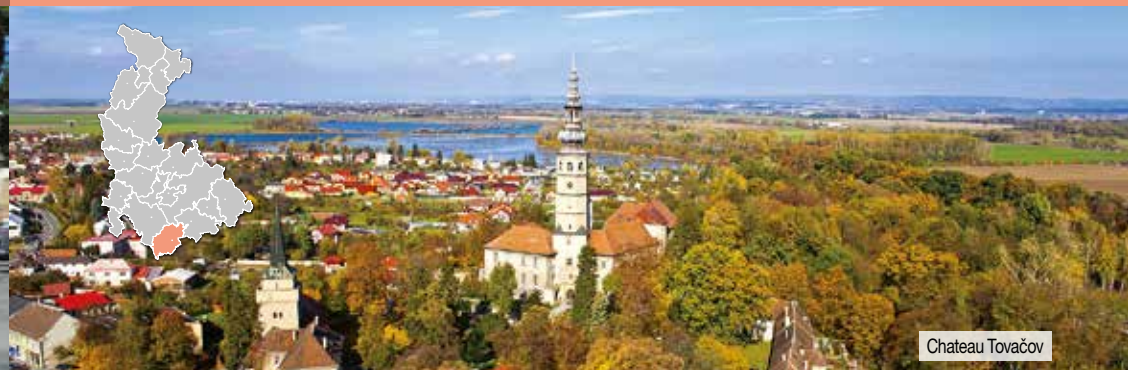
nam. | Žvaček's festival, brass music, chateau park

**July** - veteran car race uphill, [www.veteranclubkonice.cz](http://www.veteranclubkonice.cz)

**August** - Theatre in a chateau, theatre festival, chateau Konice Vojtěchov

**July** - Festival country Vojtěchov

## Central Haná



Chateau Tovačov



### Kojetín

Vzdělávací a informační centrum  
Masarykovo nám. 8, 752 01 Kojetín  
+420 581 202 202, [www.kojetin.cz](http://www.kojetin.cz)



#### Němčice nad Hanou

Turistické informační centrum

Palackého nám. 25,

798 27 Němčice nad Hanou

+420 582 386 440, [www.nemcicenh.cz](http://www.nemcicenh.cz)



#### Chateau Tovačov (Zámek Tovačov)

Chateau Tovačov with its peculiar so called Charming tower which was, according to a legend, built in the second half of 11th century and served as a shelter for hunters. It has been rebuilt into a Renaissance chateau with a Renaissance portal, which is regarded to be the oldest Italian Renaissance piece of work in the Czech Republic.

Tel.: +420 581 309, +420 723 334 794.

open: April - October Sat, Sun 10:00-18:00,

July - August Tue - Sun 10:00-18:00,

bank holidays 10:00-17:00,

[www.zamektovavcov.cz](http://www.zamektovavcov.cz)

#### Town Kojetín

Kojetín has always been a religious, administrative and trade centre. A church Assumption of the Holy Virgin, a two-tower building from the end of 17th century, is one of the major sights. In Kojetín you can also admire a town hall, a Marian column, a synagogue and a Jewish cemetery.

*Muzeum, Galerie a Vzdělávací informační centrum MěKS*

*Kojetín, Masarykovo nám. 8, tel.: +420 581 277 411,*

[www.kojetin.cz](http://www.kojetin.cz)

#### Town Němčice nad Hanou

Town Němčice nad Hanou lies in the south part of Olomouc Region. The major sights are a Church of St Mary Magdalene and an arcade, one of the last preserved ones in Haná.

*Palackého nám. 3, Němčice nad Hanou,*

tel.: +420 582 302 311, e-mail: [podatelna@nemcicenh.cz](mailto:podatelna@nemcicenh.cz)

[www.nemcicenh.cz](http://www.nemcicenh.cz)



### TRAVEL TIP

**Haná Yard Polkovice (Hanácký dvůr Polkovice)** - Newly reconstructed Haná yard in Polkovice is a residence of a horseriding club, which has been focusing on western and English horseriding for several years. You can either just come and take a look, arrange riding lessons or ride a horse in the countryside around. Tel.: +420 737 471 127, +420 733 537 265,

[www.hanackydvur.cz](http://www.hanackydvur.cz)

#### Regular events

**Kojetín, [www.kojetin.cz/meks](http://www.kojetin.cz/meks)**

**August** - O Hanacke vdolek, women volleyball tournament,

tel.: +420 604 381 159 | Kojetín music summer | Festival of dragon boats, dock Kojetín

**Tovačov, [www.tovacov.cz](http://www.tovacov.cz)**

**August** - Tovačov portal, folk ensembles

**September** - St Wenceslas festival

**Němčice nad Hanou, [www.nemcicenh.cz](http://www.nemcicenh.cz)**

**April** - Spring concerts of brass orchestras of young musicians | Hana theatre May

**July** - Zdeněk Hradil's memorial, football tournament | Němčické hody



## Šternberk Region



Race Ecce Homo Šternberk



### Šternberk

Information centre Šternberk  
Horní nám. 2, 785 01 Šternberk  
+420 739 486 060  
[www.poznej-sterbersko.cz](http://www.poznej-sterbersko.cz)



### Castle Šternberk (Hrad Šternberk)

Castle Šternberk offers three guided tours in summer and various events during all year. Visitors can see a unique collection of Italian and Nordic early Renaissance paintings and some examples of Dutch and Flemish Baroque art.

Horní náměstí 6, Šternberk,  
tel.: +420 585 012 935,  
e-mail: [hrad.sternberk@npu.cz](mailto:hrad.sternberk@npu.cz)

### ECCE HOMO Šternberk

A famous track ECCE HOMO, more than 100 years old, is 7800 m long. This uphill race takes place in June, however, in autumn Šternberk welcomes veteran cars during ECCE HOMO Historic.

Tel.: +420 585 013 400, [www.eccehomo.cz](http://www.eccehomo.cz)

### Augustinian Monastery - Gallery Handke (Augustiniánský klášter - Galerie Handke)

In the precinct of former monastery, Handke association organizes guided tours of cellars, historical halls with reconstructed ceiling paintings from J.K.Handke, picture galleries, tower clock machinery, exposition of beekeeping, Christmas expositions etc.

Handke association, Farní 3, Šternberk,  
open: January - December Mon - Sun 10:30-17:30,  
tel.: +420 604 591 340, [www.handke.cz](http://www.handke.cz)

### Town Conservation Area Šternberk

The dominant feature of the town is definitely Šternberk castle, nearby a former Augustinian monastery with a temple of Annunciation is situated. Paintings of a Baroque painter Handke can be seen in a gallery of the same name located in Šternberk monastery. In the town you can find a unique information system - „klikotoč“.

[www.sternberk.eu](http://www.sternberk.eu)

### Town Moravský Beroun

A Church of Virgin Mary Assumption dominates the town. Inside visitors can admire the oldest organ in Moravia and a picture gallery of Kryštof Handke. [www.morberoun.cz](http://www.morberoun.cz)

## TRAVEL TIP

### Time exposition Šternberk (Expozice času Šternberk)

- In this exposition you can take a look into space, where almost 14 billions years ago, thanks to a big bang, time began to fly. You can look forward to 250 unique exhibits and interactive programmes.

ČSA 19, Šternberk, tel.: +420 587 571 278, open: October-April Tue - Sun 10:00-16:00, May, June, September 10:00-17:00, July - August 09:00-17:00, [www.expozicecasu.cz](http://www.expozicecasu.cz)

### Regular events

Šternberk, [www.sternberk.eu](http://www.sternberk.eu)

**May** - Wedding day in Šternberk castle, wedding fair | ECCE HOMO, European championship, uphill car race, [www.eccehomo.cz](http://www.eccehomo.cz)

**June** - Open air opera, opera

**September** - ECCE HOMO HISTORIC, uphill veteran car race, [www.eccehomo.cz](http://www.eccehomo.cz)

Moravský Beroun, [www.morberoun.cz](http://www.morberoun.cz)

**July** - Beroun festival

**September** - Beroun craft fair

## Uničov Region



Historical building of a rison (Šatlava) in Uničov



### Uničov

Town information centre  
Masarykovo nám. 29, 783 91 Uničov  
+420 585 054 880, [www.unicov.cz](http://www.unicov.cz)



### Town Uničov

Uničov is a town with the oldest surviving establishing document in the Czech Republic, coming from 1213. The town can boast about several museums and historical sights. Sport fans and relaxation lovers will definitely like a swimming pool with a water slide, indoor swimming pool and other sport facilities.

[www.unicov.cz](http://www.unicov.cz), [www.unicovsko.cz](http://www.unicovsko.cz)

### Museum of Imprisonment Uničov (Muzeum vězeňství Uničov)

Uničov prison can be seen in fact in its original state. Displayed are not only expositions about the development of criminal law and justice but also torture devices and their replicas which you can try. There is also a police station and a town prison from the end of 19th century inside.

Příční 205, Uničov, tel.: +420 734 513 953,  
open: September - June Wed - Fri 14:00-17:00, Sun 10:00-17:00, July - August Tue - Sun 10:00-17:00,  
[www.muzeumunicov.cz](http://www.muzeumunicov.cz)

### Museum U Vodní branky Uničov

A former armoury called Vodní branka represents Renaissance architecture. The armoury belonged to a town wall system. Today it serves as a town museum with a permanent exposition with the most important and interesting documents about a royal town Uničov.

Olomoucká 322, Uničov, tel.: +420 734 513 953,  
open: July - August Sat - Sun 10:00-17:00,  
[www.muzeumunicov.cz](http://www.muzeumunicov.cz)

### Climbing the Townhall Tower

Uničov townhall tower is 45 m high, the gallery is 35 m high. Visitors can borrow binoculars and enjoy the view of beautiful surroundings of the town. In the town hall there is a small exposition of its history and a history of clock machinery.

Masarykovo nám. 1, Uničov, tel.: +420 585 054 880,  
+420 603 996 312, [www.unicov.cz](http://www.unicov.cz)

### Střelice - A Village Museum (Vesnické muzeum)

A village museum Střelice was set up on the basis of a collection of old things, tools and equipment used in the past. The exposition has been gradually extended, as the local people have devoted many objects, often very valuable and rare ones.

Střelice 100, tel.: +420 585 054 758, +420 606 234 474,  
open: after arrangement  
[www.muzeumunicov.cz/vesnické-muzeum-ve-strelcich/](http://www.muzeumunicov.cz/vesnické-muzeum-ve-strelcich/)

## TRAVEL TIP

**Follow the Knights' Footsteps (Po stopách rytířů)** - The trail is 13 km long and is not very difficult. It starts in Libina, following a blue touristic sign to Vaclavov, through Horní Třemešek and Dlouhý potok to Rabštejn gamekeeper's lodge. From this place you will follow a red touristic sign to the peak of a ruin Rabštejn.

### Regular events

Uničov, [www.unicov.cz](http://www.unicov.cz), [www.mkzunicov.cz](http://www.mkzunicov.cz)

**April** - Uničov trainer, Uničov, Nova Hradečna

**May** - Flower craft fair | Festival of balloons

**June** - Uničov craft fair | International swap meeting of packaged sugar collectors

**July - August** - Uničov cultural summer



Night view of Bouzov castle



## Litovel

Tourist information centre  
nám. Přemysla Otakara 762, 784 01  
+420 585 150 221, +420 721 269 146  
tic@litovel.eu, www.tic.litovel.eu

## Náměšť na Hané

Tourist information centre  
Hrad 1, 783 44 Náměšť na Hané  
+420 585 952 184  
zamek@namestnahane.cz  
www.namestnahane.cz

## Information centre Cholína

Cholína 224, 783 22  
+420 737 473 133, tic@obeccholina.cz



## Town Litovel

A very important sight of this town is undoubtedly St John bridge (Svatý Jánův most) built in 1592. It is the third oldest functioning stone bridge in the Czech Republic. Also a local museum is worth visiting. If you want to know more about Litovel, set off on a nature trail Historical Litovel.

www.litovelsko.eu, www.mikroRegionlitovelsko.cz

## Town Museum Litovel (Městské muzeum Litovel)

A museum focused on history of the town Litovel and its nearest surroundings.

Smyčková 795, Litovel, tel.: +420 585 341 465,  
open: October - May: Wed - Sun 09:00-16:00,  
June - September Wed - Sun 09:00-17:00,  
e-mail: muzeum@muzeumlitovel.cz, www.muzeumlitovel.cz

## Natural Swimming Pool Litovel (Biokoupaliště Litovel)

Koupaliště 1, Litovel, tel.: +420 585 342 374,  
otevřeno: v létě denně 09:19:00, www.litovel.eu

## Townhall Tower Litovel



Guided tours at the tower organized by Tourist information centre - nám. Přemysla Otakara 762, Litovel, tel.: +420 585 150 221, +420 721 269 146, guided tours: May Mon - Fri 10:00, 13:00 and 14:30, Sat 10:00 and 13:00, June - September (main season) Mon - Sun 10:00, 11:00, 13:00, 14:00, 15:00 and 16:00, October - April Mon - Sat 10:00 and 13:00, e-mail: tic@litovel.eu, www.tic.litovel.eu

## Bouzov Castle (Hrad Bouzov)

At the romantic Bouzov castle, known from many Czech fairy tales, a lot of social and cultural events are organized - exhibitions, theatre performances, concerts and many others. Interior furnishings come from private collections of archduke Evžen Habsburský (confiscated by a state) and also from the property of German Order.

Tel.: +420 775 888 960, open: April Sat - Sun 09:30-15:30, May - June Sat - Sun 09:30-16:30, July - August Mon - Sun 09:30-17:30, September Mon - Sun 09:30-15:30, October Sat - Sun 09:30-15:30, www.hrad-bouzov.cz

## Relax Park Bouzov

Relax park nabízí jízdu na minikárách nebo koloběžkách, obří vzduchovou trampolínu, let na 137 m dlouhé lanovce a orientační běh v lese okolo hradu Bouzov. Areál je umístěn u parkoviště hradu.

Bouzov, tel.: +420 608 653 028, otevřeno: denně 10:30-17:00, e-mail: petr@czasch.cz, www.relaxparkbouzov.cz

## Chateau Náměšť na Hané (Zámek Náměšť na Hané)



The chateau is surrounded by a round park, 2,5 hectares large. Interiors of the chateau are richly furnished by the period furniture. You can also admire a very valuable collection of Dresden china.

Hrad 1, Náměšť na Hané, tel.: +420 585 952 184, open: April, October Sat, Sun and bank holidays 09:00-16:00, May - September Tue - Sun 09:00-17:00, the last guided tour one hour before the closing time, Saturday mornings booked for weddings, http://zamek.namestnahane.cz

## Cholína - Haná Ethnographic Museum (Cholína - Hanácké národopisné muzeum)

This museum is located in a municipal authority building on a place of a former granary. You can see more than a thousand exhibits - Haná folk costumes, a display case of famous people born in the Region, a collection of old coins and notes from different states and properties found during an archeological research.

Cholína 52, tel.: +420 585 348 026,  
open: Mon - Sun 09:00-11:00, 13:00-16:00,  
www.obeccholina.cz

## Brewery Litovel (Pivovar Litovel)

You can learn about a traditional way of beer brewing, taste the products and see a unique exposition about history of brewing industry. Palackého 934, Litovel, tel.: +420 724 776 392, excursions including degustations for groups (minimum 15 people), booking in advance required, www.litovel.cz

## Arboretum Bílá Lhota

You can see about 300 kinds of various woody plants from south Europe, Asia, North America and Mexico, many of them are very rare - for example Japanese maples, vilina and magnolia.

Bílá Lhota, tel.: +420 725 460 888 (entrance hall, a guide), +420 725 460 881, +420 608 745 768,  
open: April Sat - Sun 09:00-17:00, May - September daily except for Monday 08:00-18:00, October Sat - Sun 09:00-17:00, e-mail: arboretum@volny.cz, www.arboretumbilalota.cz

## TRAVEL TIP

**Javoříčko Caves (Javoříčské jeskyně)** - A complicated underground system of corridors, domes and chasms full of interesting elements - e.g. 2m-long curtain or thousands of dripstone straws. Javoříčko caves are said to be the most beautifully decorated caves in the Czech Republic.

Javoříčko, tel.: +420 585 345 451, open: April Tue - Sun 09:00-15:00, May - September Tue - Sun 09:00-17:00, October Tue - Sun 09:00-15:00, www.caves.cz



**Mladeč Caves (Mladečské jeskyně)** - a complicated labyrinth of cracked corridors and richly decorated domes. This place is also archeologically and palaeontologically important.

Mladeč, tel.: +420 585 347 148,  
open: April Tue - Sun 09:00-15:00,  
May - September Tue - Sun 09:00-16:30,  
October Tue - Sun 09:00-15:00, www.caves.cz

## Regular events

### Bouzov

**May** - Bouzov 30, football pitch  
Hrad Bouzov, www.hrad-bouzov.cz

**April** - Festival of castle opening

**June** - Hana Venezia

**August** - Bouzov tournament | Balloons above the castle

**August - September** - Moravian castles, music festival





Loštice Museum of Olomoucký cheese Tvarůžky



## Mohelnice

Information centre Mohelnice  
Lazebnická 2, 789 85 Mohelnice  
+420 583 430 915  
www.infomohelnice.cz



## Town Mohelnice

At first sight you will notice a square tower of the Church of St Thomas from Canterbury and a small bishop castle, where museum is located. Besides permanent and temporary exhibitions many interesting events are organized here. The major one is definitely Mohelnický dostavník, a festival of folk and tramp music. You can relax in a holiday resort Morava Camp or a town park, for sport fans there are many hiking and cycling trails around.

www.Regionmohelnicko.cz, www.mohelnice.cz

## Úsov Chateau (Zámek Úsov)

At a chateau in Úsov, hunting-forestry museum is located. It is a unique historical museum of its kind in Central Europe. You can take a look at a collection of stuffed animals not only domestic ones, but also from Poland, Italy, India and Africa. Some of the displayed exhibits are more than 100 years old.

Zámecká 1, Úsov, tel.: +420 583 435 111,  
+420 736 676 351, e-mail:usov@muzeum-sumperk.cz,  
www.muzeum-sumperk.cz

## Loštice Swimming Pool (Koupaliště Loštice)

A newly reconstructed swimming pool with a beach volleyball court.

Tel.: 776 894 926, e-mail: koupalistelostice@gmail.com  
www.koupalistelostice.cz

## Village Loštice

Loštice is a beautiful small town in Central Moravia situated in the northernmost part of Haná, on the foothills of Jeseníky. This town is known for pottery, however, the major product coming from Loštice is undoubtedly cheese „Loštické tvarůžky“, which is smelly mature cheese favourite for its peculiar taste and aroma. In Loštice you can set off on a nature trail of Liška Bystrouška and have coffee in a café of the same name.

Náměstí Míru 1, Loštice, tel.: +420 583 445 101,  
+420 731 501 003, www.mu-lostice.cz

## Nature Trail of „Liška Bystrouška“ in Loštice (Naučná stezka lišky Bystroušky v Lošticích)

This nature trail goes through places, where the legendary fox was living in 19th century. The trail leads from Litovel to Loštice, which is 14 km, a round trail from Loštice and back is about 20 km. The way can be adjusted, all the possibilities can be found at information boards.

Náměstí Míru 66/1, 789 83 Loštice  
www.mu-lostice.cz

## Tvarůžky Patisserie in Loštice (Tvarůžková cukrárna v Lošticích)

Poštulka's salty desserts made of tvarůžky are unique and tasty desserts, which have been made here according to family recipes since 2009. The basis is formed by a home-made puff pastry and tvarůžky mousse.

Komenského 325, Loštice, tel.: +420 583 445 062,  
open: Mon - Sat 09:30-17:00, Sun 11:00-17:00,  
e-mail: info@tvaruzkovacukrarna.cz,  
www.tvaruzkovacukrarna.cz

## Museum of Olomoucké Tvarůžky Loštice (Muzeum Olomouckých tvarůžků Loštice)

A new Museum of Olomoucké tvarůžky was opened on 26th June 2014. In new exhibitions history of Olomoucké tvarůžky is shown, from the oldest sources up to nowadays.

Palackého 4, Loštice, tel.: +420 583 401 217,  
open daily 09:00-17:30,  
www.tvaruzky.cz, e-mail: awmuzeum@tvaruzky.cz

## Synagogue in Loštice

Inside the synagogue a permanent museum exposition and Oto Wolf's library are situated. Exhibitions, concerts, discussions and educational school programmes regularly take place here. In the half of 19th century 483 Jews lived in Loštice, which was 17% of all the inhabitants. From 59 people who were transported into concentration camps in 1942, only three people survived and came back home.

Tel.: +420 775 264 206, open: weekends and bank holidays  
13:00-17:00 or after arrangement,  
www.respectandtolerance.com

## Memorial of Adolf Kašpar (Památník Adolfa Kašpara)

A memorial of a famous Czech painter and illustrator.  
Palackého 343/17, Loštice, tel.: +420 583 445 256,  
open: Wed - Sun 09:00-12:00, 12:30-17:00,  
www.muzeum-sumperk.cz  
e-mail: pamatnik.lostice@seznam.cz

## Lavender Farm (Levandulový statek)



Lavender farm lies in a village Bezděkov u Úsova. In 2017 a small lavender exposition was opened, it is situated right in the middle of the village in a building of a former municipal authority. You can also buy something in a lavender shop here.

Bezděkov 6, Úsov, tel.: +420 604 744 534, +420 721 835 061,  
open 15. June - 15. July Sat - Sun 10:00-18:00, Mon - Fri 14:00-18:00,  
out of season: each last Saturday of the month 14:00 - 18:00,  
or after arrangement 721 835 061 or 604 744 534,  
info@levandulovystatek.cz, www.levandulezmoravy.cz

## Holiday Resort ATC Morava

Holiday resort Morava Camp is located in a beautiful surroundings of a forest park on the edge of Mohelnice. The resort offers accommodation in a newly reconstructed motel, cabins, caravans and tents. During summer, programmes for children and evenings with life music at a fireplace are organized here.

Petra Bezruč 13, Mohelnice, tel.: +420 775 111 721,  
open all year, www.moravacamp.cz

## TRAVEL TIP



**Mirov hiking trail (Mirovská pěší trasa)** - If you follow a green touristic sign from Mohelnice through Podolí and Vyšehorky to Mirov, you can see one of the strictest prisons in the Czech Republic. Back to Mohelnice you then follow a blue sign round Mohelnice quarries. The trail is not difficult and is 15 km long.

## Regular events

**Mohelnice, www.mks-mohelnice.cz**

Mohelnice, www.mks-mohelnice.cz

**May** - Grand Prix Mohelnice truck trial, www.velkacenamohelnice.cz

**July** - Fingers Up, music festival

**August** - Mohelnice stagecoach, www.mohelnickydostavnik.cz

**November** - International festival of puppets and puppet films

**Loštice, www.mu-lostice.cz**

**June** - Loštice festival of music and tvarůžky

**Úsov Chateau**

**April** - Witch afternoon at a chateau, the last weekend in April

## Jeseníky

Jeseníky mountains are not only mountains with beautiful scenery full of woods but also an area very rich in spas and mineral springs - hydrogen sulphide mineral springs in Velké Losiny or Bludov, hydrocarbonate-calcic mineral water in Karlova Studánka. Also carbonic mineral water springs and some radioactive springs can be found here. It is simply a very attractive Region ideal for healing holidays and trips. As far as Jeseníky folklore is concerned, wood forms the most important element. This aspect is visible in the architecture as well. Unfortunately, only a few wooden buildings have survived. They are hidden in small villages on the hills, so why

not to make a trip, enjoy pure nature and admire original small wooden churches? Jeseníky mountains are really unique. Nowhere in Europe can be found such a combination of rough and charming scenery. Rough hillsides and soaring slopes provide a protection of picturesque valleys. Hiking trails meander on hills and cross gurgling brooks. Remote villages, historical centres of towns, technically unique objects famous all over the world. Dark history of witch trials meets modern life. Jeseníky mountains - that is a paradise, not discovered yet. Recharge your batteries thanks to Jeseníky's energy and power!

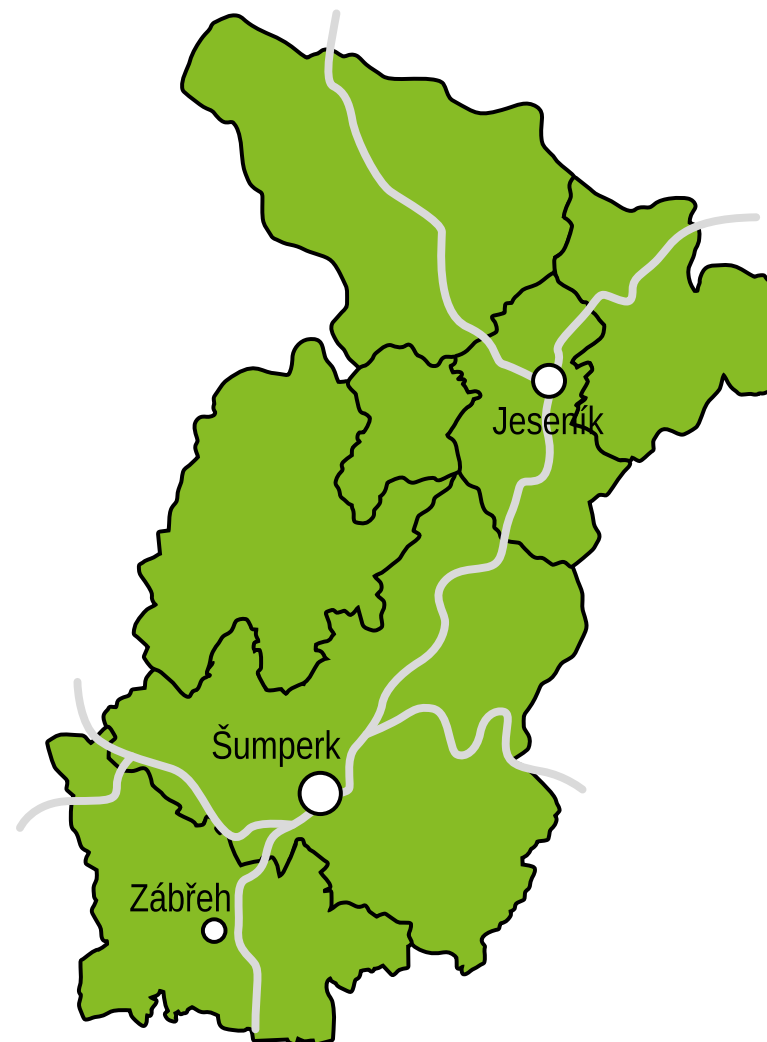
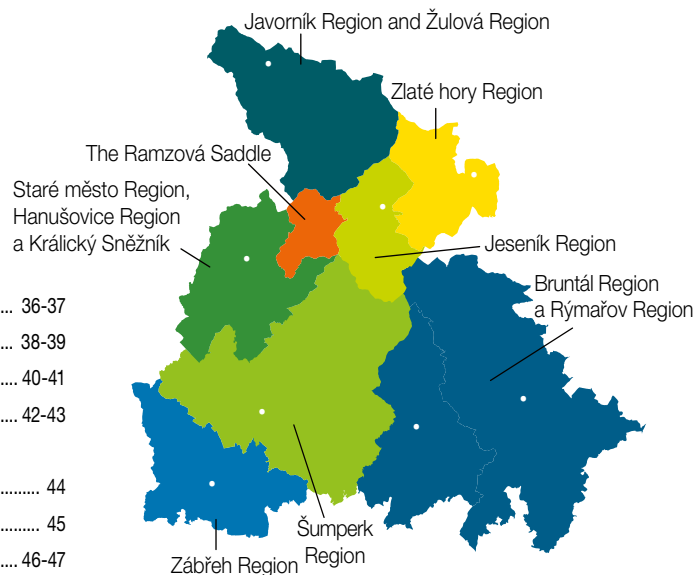


### Jeseníky – Sdružení cestovního ruchu

Organisation of tourism  
Kladská 233/1, 787 01 Šumperk  
tel.: +420 583 283 117  
E-mail: sekretariat@jesenikytourism.cz  
www.jesenikytourism.cz  
www.facebook.com/navstivtejeseniky.cz  
Open: Mon - Fri

### Content:

Šumperk Region - Šumperk .....	36-37
Šumperk Region - Velké Losiny .....	38-39
Jeseník Region .....	40-41
Staré Město Region, .....	42-43
Hanušovice Region, Králický Sněžník .....	44
Zábřeh Region .....	45
The Ramzová Saddle .....	46-47
Zlaté Hory Region .....	48-49
Javorník Region and Žulová Region .....	50-51







Geschader's house in Šternberk



## Šumperk

Information centre  
Hlavní tř. 14, 787 31 Šumperk  
+420 583 214 000  
www.infosumperk.cz

Information centre  
nám. Míru 211/4, 78701 Šumperk  
+420 731 571 586, ic-sumperk.cz

## Rapotín

Tourist information centre  
Šumperská 530, 788 14 Rapotín  
+420 583 212 211, www.kkcrapotin.cz



## Town Šumperk

Town Šumperk, founded in the second half of 13th century, has experienced many periods of blossoming and prosperity during its long and rich history but it has also descended into dark and notorious periods such as witch trials in 1679-94.

## Guided Tours Round the Town Šumperk

3 thematic tours - Walk from 13th to 21st century, A place where witches lived and Birth of small Vienna.  
nám. Míru 1, Šumperk, tel.: +420 583 388 610,  
beginning of the tours each odd-numbered hour,  
June, September 09:00, 11:00, 13:00,  
July, August 09:00, 11:00, 13:00, 15:00,  
e-mail: pruvodce@sumperk.cz, www.infosumperk.cz

## Theatre Šumperk (Divadlo Šumperk)

Komenského 3, Šumperk, tel.: +420 583 214 062,  
www.divadlosumperk.cz

## Outlook from a Townhall Tower

From the gallery of a townhall tower you will get a beautiful view of all town Šumperk.  
nám. Míru 1, Šumperk, tel.: +420 583 388 610,  
tours: June, September every hour 09:00 - 14:00,  
July - August 09:00 - 15:00,  
e-mail: pruvodce@sumperk.cz, www.infosumperk.cz

## Museum of National History Šumperk (Vlastivědné muzeum Šumperk)

In the museum a fully automatic guide in four languages Guide-PORT is installed. Šumperk museum was the first in the Czech Republic to install such a device enabling the visitors free access to the whole exposition.  
Hlavní třída 22, Šumperk, tel.: +420 583 214 070,  
open: Tue - Sun 09:00-12:00, 12:30-17:00,  
e-mail: vmsumperk@muzeum-sumperk.cz,  
www.muzeum-sumperk.cz

## Aeroclub Aerodrome Šumperk (Aeroklub letiště Šumperk)

Nový Malín 524, Šumperk, tel.: +420 583 212 067,  
www.aeroklub-sumperk.cz

## Bratrušov Swimming Pool Šumperk (Bratrušovské koupaliště Šumperk)

Bratrušov outdoor swimming pool in Šumperk offers a swimming pool for swimmers 50x25m, a swimming pool for non-swimmers 50x25m, a paddling pool, a water trampoline, a playground, a rope pyramid and a jumping castle.  
Lidická 81, Šumperk, tel.: +420 583 214 295,  
open: June Mon - Fri 13:00-20:00, Sat - Sun 09:00-20:00,  
July Mon - Sun 09:00-20:00, August Mon - Sun 10:00-20:00,  
e-mail: info@aquacentrum.net, www.aquacentrum.net

## Sportcentre Kotelna (Sportcentrum Kotelna)

Šumavská 2535/43, Šumperk, tel.: +420 776 890 120,  
+420 583 211 774, open: daily 09:00-21:00,  
e-mail: kotelna@yc.cz, regolaje@seznam.cz,  
www.fitnesskotelna.cz

## House of Culture Šumperk (Dům kultury Šumperk)

Fialova 3, Šumperk, tel.: +420 583 214 287,  
bookings +420 583 214 279, e-mail: info@dksumperk.cz,  
www.dksumperk.cz

## Lookout Háj (Rozhledna Háj)

At the top of Háj, a peak 631 m above sea level, you can find a nice newly reconstructed lookout, which is 24 m high. From this lookout you will get an unforgettable view of Hanušovická vrchovina, Rychlebské mountains, Šumperk, Hrubý Jeseník, Litovelské Pomoraví, Orlické mountains and Králický Sněžník.  
Šumperk, tel.: +420 774 664 648, +420 737 886 278, email: klubturistu.sumperk@seznam.cz, www.kctsumperk.cz

## Spa Bludov (Lázně Bludov)



The spa is famous for using new methods in respiratory diseases treatment: submontane climate of Jeseníky and a local natural source, sulphur thermal spring, known as early as in 16th century.  
Lázeňská 572, Bludov, tel.: +420 583 301 211,  
e-mail: recepcce@lazne-bludov.cz, www.lazne-bludov.cz

## Praded's Children Museum Bludov (Pradědovo dětské muzeum Bludov)

The main part of the exposition is a village Pradědovo with small wooden houses, where a witch and a miller live. There is also a railway station in the village.  
Tř. Adolfa Kašpara 37, Bludov, tel.: +420 725 508 214,  
open: Tue 14:00-18:00, Wed 09:00-18:00, Thu - Fri 14:00 - 18:00,  
Sat - Sun 09:00-18:00,  
e-mail: muzeum@pradedovo.cz, www.pradedovomuzeum.cz

## Bukovka Rapotín

A new lookout Bukovka is situated on a hill Přední Bukove in Rapotín village. From the top you will get an amazing view of Desná river valley and a ridge of Jeseníky. Open all year.  
Tel.: +420 608 292 980, e-mail: ic@kkcrapotin.cz, www.kkcrapotin.cz

## Salt Cave Šumperk (Solná jeskyně Šumperk)

Husitská 2, Šumperk, tel.: +420 583 283 316,  
bookings +420 581 112 123, open: Mon - Sun 09:00-21:00  
www.wellyrelax.cz

## Angel Path - Andělárnum Rejchartice (Andělská stezka - Andělárnum Rejchartice)

To Andělárnum in Rejchartice you can get from Šumperk town wood (fork Tulinka) along Angel path. Sculptures of angels were created during first two local sculptural and woodcarving symposiums.  
tel.: +420 608 226 989, e-mail: andelarium@gmail.com, www.andelarium.cz

## TRAVEL TIP

### Exposition Witch trials (Expozice Čarodějnické procesy)

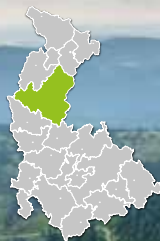
- A permanent exposition in a Geschader's house in Šumperk shows the darkest period of Šumperk history - notorious inquisitional trials from the second half of 17th century. Via audioguide, you will be guided round the exposition by the main initiator of the trials, an inquisitor Jindřich František Boblig.

**Museum of roads in Víkřovice (Muzeum silnic ve Víkřovicích)** - A permanent exposition showing development of roads from the oldest paths up to today's modern roads. You can see many historical maps, documents and rare photographs here.

Hraběšická 203, Víkřovice, tel.: +420 583 211 688, open: January - December Tue - Sat 10:00-16:00,  
e-mail: muzeumsilnic@ssok.cz, www.ssok.cz/muzeum.html

## Regular events

Šumperk, www.sumperk.cz, www.dksumperk.cz  
**January - December** - Taste Jeseníky, festival of gastronomy, www.navstivtejeseniky.cz  
**February - May** - Klasika Viva, every month one concert  
**March** - Echo Blues Alive, www.bluesalive.cz  
**April** - Eurofest, www.eurofest.cz  
**May** - International festival of religious vocal music, www.sumperk.cz  
**August** - Revival invasion | International festival of folklore CIOFF  
**October** - Jammfest (Džemfest, music festival  
**November** - Blues Alive



The Pumped-Storage Hydro Power Station Dlouhé Stráně



## Velké Losiny

Information centre  
Lázeňská 674, 788 15 Velké Losiny  
+420 583 248 248, [www.iclosiny.cz](http://www.iclosiny.cz)



## Paper Manufacture

and Museum of Paper Velké Losiny  
(Ruční papírna a Muzeum papíru Velké Losiny)



Paper manufacture has been continuously working in Velké Losiny since the end of 16th century. In two guided tours visitors can see traditional techniques of handmade paper production, history of this craft and many technical interesting facts.

UPapírny9, Velké Losiny, tel.: +420583248433, +420583286063,  
open: January-April, October-December Tue-Fri 09:00-16:00,  
Sat - Sun 09:00-12:00, 12:30-16:00, May - June  
Mon - Fri 09:00-17:00, Sat, Sun 09:00-12:00, 12:30-17:00,  
July - August Mon - Fri 09:00-18:00, Sat - Sun 09:00-12:00,  
12:30-18:00, September Mon - Fri 09:00-17:00,  
Sat - Sun 09:00-12:00, 12:30-17:00,  
e-mail: [muzeum.papiru@rpvl.cz](mailto:muzeum.papiru@rpvl.cz), [infocentrum@rpvl.cz](mailto:infocentrum@rpvl.cz),  
[www.rpvl.cz](http://www.rpvl.cz)

## Chateau Velké Losiny (Zámek Velké Losiny)

A state chateau Velké Losiny lies on the south edge of a small town of the same name, in a valley of Desná river. The chateau is famous for three-floor arcades of a three-wing building, so called high chateau. The place is notorious also for witch trials.  
Zámecká, Velké Losiny, tel.: +420583248380, +420602582878,  
open: April Sat - Sun 09:00-16:00, May - June Tue -  
Sun 08:00-17:00, July - August Tue - Sun 09:00-18:00,  
September Tue - Sun 09:00-16:00, October Sat - Sun 09:00-16:00,  
e-mail: [velkelosiny@npu.cz](mailto:velkelosiny@npu.cz), [www.zamek-losiny.cz](http://www.zamek-losiny.cz)

## Thermal Spa Velké Losiny (Termální lázně Velké Losiny)

A combination of relaxation, recovery and wholesome thermal water, that is a unique thermal park, the only one of its kind in the Czech Republic. It offers 4 outdoor swimming pools and 5 inside swimming pools.

Komenského 235, Velké Losiny, tel.: +420 583 394 444,  
open: Tue - Sun 10:00-20:00, in the main season also Mon 09:00-  
21:00, e-mail: [info@termaly-losiny.cz](mailto:info@termaly-losiny.cz), [www.termaly-losiny.cz](http://www.termaly-losiny.cz)

## Health Resort Velké Losiny (Areál zdraví Velké Losiny)

Health resort in Velké Losiny offers sport and cultural activities. You can for example play ball games or do exercise on several fitness machines.

Rudé armády, Velké Losiny, tel.: +420 583 211 526,  
+420 727 807 743, open: Mon - Fri 08:00-21:00,  
e-mail: [arealzdravi@losiny.cz](mailto:arealzdravi@losiny.cz), [www.arealzdravi.losiny.cz](http://www.arealzdravi.losiny.cz)

## Mountain Centre of Entertainment and Sport Kouty nad Desnou (Horské centrum zábavy a sportu)

Kouty nad Desnou 30, tel.: +420 585 283 282,  
open daily 09:00-17:00, [info@k3-sport.cz](mailto:info@k3-sport.cz), [www.kouty.cz](http://www.kouty.cz)

## Červenohorské Sedlo

Červenohorské sedlo is a significant ski resort on the border of Moravia and Silesia. There are 7 ski lifts and 4 slopes in total. Great snow conditions are always guaranteed.

Kouty nad Desnou 72, Loučná nad Desnou,  
tel.: +420 603 228 597, e-mail: [info@skiarealchs.eu](mailto:info@skiarealchs.eu),  
[www.cervenohorskesedlo.eu](http://www.cervenohorskesedlo.eu)

## Chateau with a Chateau garden Loučná nad Desnou (Zámek Loučná nad Desnou)

A former hunting chateau with original Renaissance vaults is surrounded by a big park. The park is, unlike the chateau, open to the public.

## Praděd



Praděd is the highest mountain of Moravia and at the same time the highest peak of Hrubý and Nizký Jeseník. At the top of Praděd a television transmitter with a restaurant and a lookout is situated. The upper platform of the transmitter forms the highest (however artificial) point of the Czech Republic.

[www.jeseniky-praded.cz](http://www.jeseniky-praded.cz)

## Wooden Churches - Maršikov, Žárová, Klepáčov

Renaissance log wooden St Martin's church is located in the centre of Žárová village, not far from Velké Losiny. Unique log churches can be found in Maršikov and Klepáčov as well.

[www.navstivtejeseniky.cz](http://www.navstivtejeseniky.cz)

## Adrenalin Centre KM sport, Loučná nad Desnou (Adrenalinové centrum KM sport)

Kociánov 76, Loučná nad Desnou, tel.: +420 604 608 489,  
e-mail: [kmsport@kmsport.cz](mailto:kmsport@kmsport.cz), [www.kmsport.cz](http://www.kmsport.cz)

## Chateau Sobotín (Zámek Sobotín)

A luxurious chateau resort Sobotín offers a wide range of services. There is a chateau brewery, a wellness centre with relaxation spa and saunas, fitness, an outdoor swimming pool, tennis courts, a rope centre, adventure golf, a minizoo and many other activities.

Sobotín 3, tel.: +420 777 472 401  
e-mail: [info@resortsobotin.cz](mailto:info@resortsobotin.cz), [www.resortsobotin.cz](http://www.resortsobotin.cz)

## SKI Resort Kareš (SKI areál Kareš)

SKI areál Kareš v Koutech nad Desnou nabízí vyžití jak v letním, tak v zimním období. V zimě jsou k dispozici 4 lyžařské vleky, ski areál je ideální pro začátečníky, lyžařské kurzy a rodiny s dětmi. V létě nabízí např. minikáry s dráhou o délce 480 m., travní lyže, venkovní posezení s grilem.

Loučná nad Desnou 68, tel.: +420 583 235 090,  
[www.skiarealkares.cz](http://www.skiarealkares.cz)

## TRAVEL TIP

**Pumped-Storage Hydro Power Station Dlouhé Stráně (Přecerpávací vodní elektrárna Dlouhé Stráně)** - This power station is the third biggest power station of its kind in the world. It has the largest reversing water turbine in Europe, the largest head of all power stations in the Czech Republic and the largest installed capacity in the Czech Republic.

Kouty nad Desnou 30, Loučná nad Desnou,  
tel.: +420 602 322 244, +420 583 283 282, excursions after  
arrangement, e-mail: [infocentrum.eds@cez.cz](mailto:infocentrum.eds@cez.cz),  
[info@k3-sport.cz](mailto:info@k3-sport.cz), [www.dlouhe-strane.cz](http://www.dlouhe-strane.cz)

**Lookout - Television tower Praděd (Rozhledna - Televizní věž Praděd)** - A supermodern telecommunication tower reminding a starting rocket was built on a place of a former lookout. From the lookout terrace you will get an amazing view of Jeseníky, during favourable weather also of High Tatras. The upper platform of the transmitter is 73 m high and so forms the highest point (however artificial) in the Czech Republic.

Tel.: +420 554 772 004, e-mail: [info@jeseniky-praded.cz](mailto:info@jeseniky-praded.cz),  
[www.jeseniky-praded.cz](http://www.jeseniky-praded.cz)

## Regular events

**Velké Losiny, [www.iclosiny.cz](http://www.iclosiny.cz)**

**April** - Burning of witches Velké Losiny

**May** - Rallye Rejviz, Kouty nad Desnou

**June** - Maršikov fair | Midsummer night festival in Velké Losiny

**July - August** - Losiny cultural summer

**August** - Paper manufacture for kids, Indian summer in paper manufacture

**September/October** - Chocolate spa - chocolate in movement in Velké Losiny





View from Devil's stones (Čertovy kameny) in Jeseníky



## Jeseník

Czech-Polish information centre  
Palackého 12, 790 01 Jeseník  
+420 725 591 621  
[www.jesenik.org/ic](http://www.jesenik.org/ic)

## Jeseník, Priessnitzovy lázně

Spa information centre  
Priessnitzova 12/299, 790 03 Jeseník  
+420 584 491 470, [www.priessnitz.cz](http://www.priessnitz.cz)



## Town Jeseník

This spa town is hidden inside the nature between Hrubý Jeseník and Rychlebské mountains. Priessnitz spa together with Spa Karlova Studánka can boast about the purest air in Central Europe and more than 80 springs of crystal clear mountain water.  
[www.jesenik.org](http://www.jesenik.org)

## Jeseníky Museum of Natural History (Vlastivědné muzeum Jesenicka)

Sídlem Vlastivědného muzea se stala vodní tvrz, v ní jsou tři stálé expozice - historie jeseníckého Regionu od pravěku, expozice geologie a mineralogie Jesenicka a expozice zdejší fauny a flory. Součástí muzea je Expozice „Spirála casu Země“ - nová stálá expozice přibližuje vznik Země a geomorfologický vývoj Jesenicka.

Zámecké náměstí 1, Jeseník, tel.: +420 584 401 070,  
open: September - May Tue - Sat 09:00-12:00 and 13:00-17:00,  
June - August Tue - Sun 09:00-12:00 and 13:00-17:00,  
[www.jeseniky.net/muzeum-vodni-tvrz](http://www.jeseniky.net/muzeum-vodni-tvrz)

## Salt Cave Solvita, Jeseník (Solná jeskyně Solvita)

Priessnitzovy lázně Jeseník, open: Mon - Fri 9:00-19:00,  
Sat - Sun 10:00-17:00, tel.: +420 584 452 579,  
[www.solvita.cz](http://www.solvita.cz)

## Priessnitz Spa Resort Jeseník (Priessnitzovy léčebné lázně Jeseník)

Priessnitz spa resort was founded by Vincenz Priessnitz, thanks to him this place has become famous. According to his model, tents of spa resorts all around Europe have been built. In Jeseník you will find a European rarity, a balneopark lying above the spa resort. The conception of the balneopark follows traditional water healing methods of Vincenz Priessnitz and develops his philosophy of medical treatment with the use of water, sun and movement. Around the spa in Jeseník you can cycle on five cycle circuits which are more than 100 km long - Jescyclo.  
Priessnitzova 12/299, Jeseník, tel.: +420 584 491 111,  
information centre +420 584 491 470,  
e-mail: [infocentrum@priessnitz.cz](mailto:infocentrum@priessnitz.cz), [www.priessnitz.cz](http://www.priessnitz.cz)

## Museum of Vincenz Priessnitz, Jeseník (Muzeum Vincenze Priessnitze, Jeseník)

Muzeum Vincence Priessnitze, Jeseník - Lázně 175,  
tel.: +420 584 411 633, otevřeno: únor-červen ÚT-SO 14:00-17:00, červenec-srpen ÚT-NE 12:00-17:00, září-17. listopadu ÚT-SO 14:00-17:00, [www.muzeum.jeseniky.net](http://www.muzeum.jeseniky.net)

## Lipová Trails (Lipovské stezky)

Lipová Trails are trails for mountain bikes located on a meadow above hotel Helios garden. They form a web of trails intended for mountain bike downhill. They consist of two types: a Helios trail on the meadow, 4700 m long and Toč trail located in a forest. Its total length is 3300 m and a vertical distance 70 m.  
Tel.: +420 607 061 445, IC open during  
summer school holidays: Mon - Sun 09:00-18:00,  
out of season Thu - Sun and bank holidays 09:00-18:00,  
[bikeskola@rychlebskestezky.cz](http://bikeskola@rychlebskestezky.cz), [www.zazemilipovskestezky.cz](http://www.zazemilipovskestezky.cz)

## Faunapark Lipová Lázně

Fauna park in Horní Lipová is a small private ZOO.  
Tel.: +420 739 443 204, [www.faunapark-ops.cz](http://www.faunapark-ops.cz)

## Schroth Spa Resort in Dolní Lipová (Schrothovy léčebné lázně v Dolní Lipové)

Healing and rehabilitation methods are focused mainly on treatment of non-infectious skin diseases, metabolic diseases and respiratory diseases.  
Dolní Lipová 382, tel.: +420 777 457 111,  
e-mail: [info@lazne-lipova.cz](mailto:info@lazne-lipova.cz), [www.lazne-lipova.cz](http://www.lazne-lipova.cz)

## Caves „Na Pomezí“ (Jeskyně Na Pomezí)

Caves „Na Pomezí“ are the largest cave system in the Czech Republic created by marble melting which is open to the public.  
Lipová-lázně, tel.: +420 584 421 284,  
open: January - March in the week after arrangement, weekends closed, April - June Mon - Fri 09:00-16:00, Sat - Sun 09:00-16:00, July - August daily 09:00-17:00, September - October Tue - Fri 09:00-16:00, Sat - Sun 09:00-16:00

## Museum of Silesian Semmering - Horní Lipová (Muzeum Slezského Semmeringu - Horní Lipová)

Museum describes a history of mountain stretch Branná - Ostružná - Ramzová - Horní Lipová - Lipová Lázně on a railway Hanušovice - Jeseník, opened in 1888.  
ŽST Horní Lipová, Horní Lipová 191, tel.: +420 972 745 627,  
entrance after arrangement with a train dispatcher in a travel office daily 5:00 - 22:00, [www.jeseniky.net](http://www.jeseniky.net)

## Museum of Veteran Cars Česká Ves (Muzeum veteránů Česká Ves)

In the museum you can find a collection of historical motorcycles and cars.  
Jánského ul., Česká Ves,  
tel.: +420 584 428 218, +420 608 502 601,  
open: June - August Mon - Sun 11:00-17:00,  
May - September Sun 11:00-16:30, [www.jeseniky.net](http://www.jeseniky.net)

## Adrenalin Park Česká Ves

Besides a rope centre it offers other touristic and sport attractions for adventure lovers and romantic people - a giant swing, offroad quad-bikes, cyclo MTB trips, horseriding, paintball, canoeing, an adrenalin tower, a bungee trampoline, archery and a children's park.  
Ranč Orel, Polská 9, Česká Ves u Jeseníku,  
tel.: +420 584 414 051, +420 731 543 237  
[www.jeseniky.net/adrenalinpark](http://www.jeseniky.net/adrenalinpark)

## Johann Schroth's Museum, Lipová Lázně (Muzeum Johanna Schrotha, Lipová Lázně)

The museum is focused on spa treatment in the village and a development of the village both before and after war.  
Lipová - lázně 476, tel.: +420 584 421 209,  
open: Mon - Fri 09:00-12:00 and 12:30-17:00,  
Sat - Sun 13:00-17:00,  
e-mail: [muzeum@ic-lipova.cz](mailto:muzeum@ic-lipova.cz), [www.jeseniky.net](http://www.jeseniky.net)

## Holiday Resort Autocamping Bobrovník, Lipová-Lázně

Lipová Lázně 648, tel.: +420 584 411 145,  
open: all year, [www.bobrovnik.cz](http://www.bobrovnik.cz)



## TRAVEL TIP

**Lookout Zlatý Chlum (Rozhledna Zlatý Chlum)** - Zlatý Chlum (875 above sea level) - 26 m high lookout offers a beautiful view of Otmuchov lake in Poland. Looking south you will see all Hrubý Jeseník mountains from Praděd to Šerák.  
Raisova 706/2, Jeseník, tel.: +420 603 509 943,  
[www.jeseniky.net/rozhledna-zlaty-chlum](http://www.jeseniky.net/rozhledna-zlaty-chlum)



**Forest Bar Horní Lipová (Lesní bar Horní Lipová)** - This self-service bar near Horní Lipová lies 755 m above sea level. During your hiking around Jeseníky mountains, you can refresh yourself here. Buy coffee, tea, something sweet, spirits, soft drinks or roast a sausage above the fire. You put money into a small money box.

## Regular events

**Jeseník, www.mkzjes.cz**  
**February - May** - Classic Viva, [www.klasikaviva.cz](http://www.klasikaviva.cz)  
**April** - Theatre Žatva, Petr Bezruč's Theatre | International Schubert's competition for piano duos  
**May** - May music session | Spa season opening  
**June** - Concert for Jeseníky | Motomeeting Roxor Jeseník II | International festival of brass music  
**July** - Jeseník nugget  
**July, August** - Promenade concerts  
**September** - St Wenceslas meeting  
**September - December** - Classic Viva, one concert every month, [www.klasikaviva.cz](http://www.klasikaviva.cz)  
**October** - Vincenz Priessnitz's week, [www.priessnitz.cz](http://www.priessnitz.cz)  
**Bělá pod Pradědem**  
**September** - Jeseník harvest home, Relaxcentre in Domašov



Králický Sněžník mountain range



## Staré město pod Sněžníkem

Tourist information centre  
nám. Osvobození 166, 788 32 Staré Město  
+420 725 502 753, [www.staremesto.info](http://www.staremesto.info)

## Hanušovice

Tourist information centre  
Hlavní 137, 788 33 Hanušovice  
+420 583 285 615, [www.ichanusovice.cz](http://www.ichanusovice.cz)

## Hynčice pod Sušinou

Information centre „Kolovna“  
788 32 Hynčice pod Sušinou 16  
+420 778 069 319, [bikecentrum@kolovna.com](mailto:bikecentrum@kolovna.com)



## Town Staré Město pod Sněžníkem



## System of Borderline Fortification



Czechoslovak borderline fortification, which was being built between 1937 and 1938 against fascist Germany, belonged to the most perfect fort systems in Europe. It was planned to build 16 log cabins, however, only six were finished.

nám. Osvobození 166, Staré Město pod Sněžníkem,  
Turistické informační centrum, tel.: +420 583 239 134,  
e-mail: [info@mu-staremesto.cz](mailto:info@mu-staremesto.cz)

## Military Museum Staré Město (Vojenské muzeum Staré Město)

Modern history lovers should definitely visit Military museum in Staré Město pod Sněžníkem. Two expositions devoted to a story of Czechoslovak borderline fortification between 1935 and 1938 are prepared here. Staré Město part of this defence system has never been used. Today there is an educative nature trail „Staré Město fortification territory“ leading through this area.

Beton Bunker Club Kronfelzov, o. s. Hanušovická 351,  
Kasárna - building no. 11, Staré Město,  
tel.: +420 739 963 678, +420 732 530 774,  
open: May - October Sat 09:00-17:00, Sun 09:00-15:00  
April and November Sat 09:00-15:00, Sun 09:00-14:30,  
[www.opiveni-stm.cz](http://www.opiveni-stm.cz)

## Králický Sněžník



National nature reserve Králický Sněžník was declared in 1990 on the area of 1694,67 hectares. From the peak of Králický Sněžník you will get a breathtaking view of Hrubý Jeseník, Orlické mountains, Krkonoše and Polish Sowi mountains. The name of the mountain refers to a long winter here - the peak is covered with snow for 8 months of the year.

Tel.: +420 583 239 134, [www.staremesto.info](http://www.staremesto.info)

## Area Kraličák (Areál Kraličák)

Hills around Králický Sněžník are full of hiking trails. Crosscountry trails are maintained for MTB lovers, nordic walking fans and hikers.

Tel.: +420 603 150 184, [www.skikralicak.cz](http://www.skikralicak.cz)

## Museum of Czechoslovak Fortification 1935-38 „By the Brook“ (Muzeum čs. Opevnění z let 1935-38 „U Potoka“)

Tel.: +420 775 301 233, e-mail: [info@ks5.cz](mailto:info@ks5.cz)

## Holiday Resort and Activity Park Krupá (Rekreační středisko a Aktivita park Krupá)

A heated swimming pool, football pitch, disc golf, outdoor natural campsite, interactive room with a data projector, children's trampoline, low rope park, climbing wall, ropeway, Big swing, bungee trampoline, bungeerunning, archery, paintball game, jumping shoes.

Kladská 50, Staré město pod Sněžníkem,  
tel.: +420 777 156 769, [www.rskrupa.cz](http://www.rskrupa.cz)

## Mountain Cottage Paprsek (Horská chata Paprsek)



Tel.: +420 777 076 542, e-mail: [info@paprsek.cz](mailto:info@paprsek.cz)  
[www.paprsek.cz](http://www.paprsek.cz)



## TRAVEL TIP

**Museum of brewing industry, Brewery HOLBA Hanušovice (Pivovarské muzeum, Pivovar HOLBA Hanušovice)** - If you visit Hanušovice Region, you must taste the local beer. In Hanušovice brewery beer has been made according to original recipes since 1874. You can visit also a Museum of brewing industry with very interesting expositions and life-sized wax figures of head brewer and a habitué.

Pivovarská 265, tel.: +420 583 284 699,  
open: Mon - Fri 10:00-16:00, Sat 10:00-15:00  
[www.pivovarskemuzeum.cz](http://www.pivovarskemuzeum.cz)

## Regular events

**Staré Město pod Sněžníkem, [www.staremesto.info](http://www.staremesto.info)**

**June** - Riding a scooter over Kladecké saddle

**July** - organic festival, organic fair, degustations, excursions on an organic farm

**September** - International climbing of Kralický Sněžník and Hiking to Morava headspring, [www.nakralickysneznik.cz](http://www.nakralickysneznik.cz)

**October** - Filmfest Stare Mesto, [www.filmfeststaremesto.cz](http://www.filmfeststaremesto.cz)  
Hanušovice

**June** - Brewery fifty (Pivovarska padesátka), bicycle race,  
[www.kolobka.cz](http://www.kolobka.cz)

**July** - Festival Gold hands

**September** - Brewery festival, excursions to a brewery, entertaining programme, [www.holba.cz](http://www.holba.cz)





Chateau Skalička



## Zábřeh

Infocentre Zábřeh  
Čs. Armády 1, 789 01 Zábřeh  
+420 583 411 653, <http://tourism.zabreh.cz>



## Town Zábřeh

Museum in Zábřeh offers an exposition about a native, adventurer and traveller Jan Eskymo Welzl. Zábřeh serves also as a starting point for trips to Brničko ruin, chateau Skalička or Acrobat Park of Aleš Valenta in Štíty. You can also cycle or in-line skate on a former railway track between villages Lupěné and Hněvkov.

Information centre, ČSA 1, Zábřeh,  
tel.: +420 583 411 653, [tourism.zabreh.cz](http://tourism.zabreh.cz)

## Chateau Skalička (Zámek Skalička)

Chateau Skalička is situated in the middle of a small park in a village of the same name. Concerts, exhibitions of young artists and many club and social events are organized here.

Skalička 15, Zábřeh, tel.: +420 583 411 288,  
open: May - October Sun 14:00-18:00,  
e-mail: [info@zamek-skalička.cz](mailto:info@zamek-skalička.cz),  
[www.zamek-skalička.cz](http://www.zamek-skalička.cz)

## Railway Open-Air Museum Zábřeh (Železniční skanzen Zábřeh)

A project „Railway open-air museum on an abandoned railway track“ is connected to a cycleway on an abandoned railway track between Hněvkov and Lupěné. There is an educational nature trail with some thematic exhibits - steam locomotive line 317, mechanical crossing gate and various types of signalings.

Tel.: +420 583 468 111, e-mail: [posta@muzabreh.cz](mailto:posta@muzabreh.cz)

## Museum Zábřeh (Muzeum Zábřeh)

Žižkova 1, Zábřeh, tel.: +420 583 413 646, +420 603 174 514,  
open all year Tue - Sun 09:00-12:00 and 12:30-17:00,  
e-mail: [zabreh@muzeum-sumperk.cz](mailto:zabreh@muzeum-sumperk.cz)

## TRAVEL TIP

**Acrobat Park Štíty** - The largest resort of its kind in the world. You can do many sport activities here - acrobatic ski jump into water, trampoline jumping, jumping into water from a tower, snowboarding, new style (a mix of acrobatic skiing and snowboarding). What is more, an outdoor climbing wall is one of the biggest ones in the Czech Republic.

U parku 349, Štíty, tel.: +420 737 189 351,  
open: May Thu - Fri 15:00-19:00, Sat - Sun 12:00-19:00,  
June Wed - Sun 10:00-19:00, July Mon - Sun 10:00-21:00,  
August Mon - Sun 10:00-21:00, September Wed - Sun 10:00-19:00,  
October Wed - Sun 10:00-18:00, November Mon - Thu 14:00-21:00,  
Fri - Sun 12:00-21:00, January Fri - Sat 17:00-21:00, Sun 15:00-20:00,  
e-mail: [info@acrobatpark.com](mailto:info@acrobatpark.com), [www.acrobatpark.com](http://www.acrobatpark.com)

## Regular events

Zábřeh, [www.tourism.zabreh.cz](http://www.tourism.zabreh.cz)

**April** - Follow the footsteps of Eskymo Welzl, a long-distance hike | Welzlovani - humour competition

**May** - Grand Prix of Eskymo Welzl, Masaryk square

**June** - Gamekeeper and beer festival, [www.kulturak.info](http://www.kulturak.info) | 7and a half Fest, music festival, [www.kulturak.info](http://www.kulturak.info)

**July** - International interpretative courses „Music in the town of J.E.Welzl“, [www.zus-zabreh.cz](http://www.zus-zabreh.cz)

**August** - Organ marathon

**September** - Zábřeh cultural fair

**Štíty**

**July** - Freestyle Gzech Open, World championship in acrobatic skiing

**August** - Snowboard & Freeski Contest, the biggest summer contest of its kind in Acrobat Park Štíty, [www.acrobatpark.com](http://www.acrobatpark.com)



Jiří's Cottage under the peak of Šerák



## Information service Ramzová

(Ramzová - Parking place next to the main road)  
+420 739 386 555, [www.jesenicko.eu](http://www.jesenicko.eu)



## Šerák - Kepník

You can walk or use a chairlift to Šerák with one change on Čerňava. On the top you will be rewarded by a beautiful view of all Králický Sněžník, peaks of Jeseníky mountains and Rychlebské mountains. The area is full of hiking trails.

[www.jeseniky-tourism.cz](http://www.jeseniky-tourism.cz),  
[www.jeseniky.ochranaprirody.cz](http://www.jeseniky.ochranaprirody.cz)

## Relaxation Centre Kolštejn (Relax centrum Kolštejn)

Relaxation centre is an ideal place for a wellness weekend and a stay in Jeseníky. Visitors can enjoy six saunas, steam bath, salt and herbal therapy, baths, massages and tropical rain

Branná 60, tel.: +420 583 286 421, open: Mon - Thu 10:00-22:00, Fri, Sat 10:00-23:00, Sun 10:00-21:00,  
[www.relaxkolstejn.cz](http://www.relaxkolstejn.cz)

## Summer Bobsleigh Track Kaste Petříkov (Letní bobová dráha Kaste Petříkov)

Ostružná-Petříkov 82, tel.: +420 583 230 098,  
open: May, October Fri - Sun 10:00-18:00,  
June - August daily 10:00-18:00, [www.kaste.cz](http://www.kaste.cz)

## Exposition of Musical Instruments, Ostružná (Expozice hudebních nástrojů, Ostružná)

Mountain hotel Skiland, Ostružná 66, tel.: +420 777 254 542,  
+420 737 050 616, open: daily 10:00-17:00,  
e-mail: [skiland@skiland.cz](mailto:skiland@skiland.cz), [www.skiland.cz](http://www.skiland.cz)

## Museum of Czechoslovak Pre-War Fortification, Fort Branná (Muzeum předválečného opevnění ČS opevnění Branná)

Military history club operates a Museum of Czechoslovak fortification Branná and cooperates with many organisations and institutions, thanks to which the fortress can be reconstructed.

U samoty Splav, Branná, tel.: +420 776 025 621,  
e-mail: [kvhol@centrum.cz](mailto:kvhol@centrum.cz), [www.kvhol.cz](http://www.kvhol.cz)

## Branná - Kolštejn

A Gothic castle ruin is covered by a Renaissance chateau from the north side. In the courtyard many cultural events take place. After arrangement with a castle manager, night tours with torches are possible. The castle also provides accommodation in Chateau Goldenstein.

Tel.: +420 777 106 138, open: April - June and September - October Sat - Sun 09:00-17:00,  
July - August Tue - Sun 09:00-17:00 (12:00-12:45 lunch break)  
[www.branna.sweb.cz](http://www.branna.sweb.cz), [www.chateaugoldenstein.com](http://www.chateaugoldenstein.com)

## TRAVEL TIP

**Using a chairlift to Šerák** - The chairlift in Ramzová serves as a starting point to a northern ridge of Jeseníky, both in summer and winter season. By the chairlift you will get to the mountain Šerák, from this place you can go on walking or crosscountry skiing in winter along the main ridge of Jeseníky to Skřítek saddle.

Ramzová 339, Ostružná,  
tel.: +420 583 230 070, +420 583 230 077, [www.bonera.cz](http://www.bonera.cz)

## Regular events

Branná, [www.obecbranna.cz](http://www.obecbranna.cz)

**September** - Kolštejn circuit Parus prize, motorcycle and sidecar race, [www.kolstejnkyokruh.cz](http://www.kolstejnkyokruh.cz)

**August** - Marian fair, [www.poutbranna.cz](http://www.poutbranna.cz)





Gold ore millhouses in Zlaté Hory



## Zlaté Hory

Town information centre  
Bezručova 144, 793 76 Zlaté Hory  
+420 584 425 397, [www.zlatehory.cz](http://www.zlatehory.cz)



## Town Conservation Area Zlaté Hory

The town can boast about many historical sights, Renaissance and Baroque houses and religious buildings. Visitors can admire a Church of the Assumption of Virgin Mary, hospital church St Cross, chapel of St Roch, ruins Edelštejn, Leuchtenštejn and Kobrštejn. However, the most valuable sight of the conservation area is regarded to be a former post office building. Today Town museum Zlaté Hory is located there. If you visit this museum, you can learn more about gold mining.

[www.zlatehory.cz](http://www.zlatehory.cz)

## Town Museum Zlaté Hory (Městské muzeum)

The town museum is located in a former post office building. It was built in 1698 in a Dutch Baroque style by Nentwig family and was the first post office in Silesia. That time it was one of the stops on the post way to Poland, horses were swapped here to post carriages and people could stay overnight. In the post office some famous people stayed overnight: for example emperor Josef II. 8th July 1766, prince Ditrichstein and generals Laudon, Lascy, Colloredo Stampa. Expositions are placed all over the museum.

Nám. Svobody 94, tel.: +420 584 425 329,  
open: May - June, September - October  
Tue - Fri 09:00-12:00 and 13:00-16:00, Sat 09:00-13:00,  
July - August Mon - Fri 09:00-12:00 and 13:00-17:00,  
Sat - Sun 10:00-16:00, [www.zlatehory.cz](http://www.zlatehory.cz)

## Cave Na Špičáku (Jeskyně Na Špičáku)



This cave goes through the peak Velký Špičák. It is said to be the oldest documented cave in central Europe, first written reference dates back to 1430. The cave is formed by more than 400 m long labyrinth of corridors and rifts, with a vertical distance of over 10 m. The guided tour is 220 m long and is wheelchair accessible.

Tel.: +420 584 423 129, +420 602 295 562, open April - June, September - October Tue - Sun 09:00-16:00, July - August Mon - Sun 09:00-17:00, [www.caves.cz](http://www.caves.cz)

## The Pilgrimage Church of the Virgin Mary the Helper (Poutní místo Panny Marie Pomocné)

The pilgrimage church of the Virgin Mary the Helper is located about three kilometres south from Zlaté Hory in Jeseník Region. In the first half of 18th century a wooden chapel was built here, later it was rebuilt into a church. The pilgrimage church of the Virgin Mary the Helper - Maria Hilf, is a pilgrimage place surrounded with a legend about Marian picture with a magical healing power. This pilgrimage place is devoted to unborn life protection and is open to all visitors and pilgrims.

Tel.: +420 584 425 916, [www.mariahlf.hyperlink.cz](http://www.mariahlf.hyperlink.cz)

## Lookout Biskupská kupa (Rozhledna na Biskupské kupě)



Biskupská kupa is the oldest stone lookout in Jeseníky, 18 m high. It offers an amazing view of all area of Zlaté Hory Region, Vrbno pod Pradědem and Jeseník. If the weather is nice, you can even see Polish Wrocław and the highest peaks of High Tatras. In 1896 first post office in Moravia was opened here. Since 2006 it has been renewed and so you can send letters or postcards directly from the lookout.

Tel.: +420 603 342 011, open: May - October Mon - Sun 09:00-18:00, or after arrangement, during nice weather from dawn till dusk, [www.rozhlednabiskupskakupa.cz](http://www.rozhlednabiskupskakupa.cz)

## TRAVEL TIP



## Rejvíz and an educative nature trail (Rejvíz a naučná stezka)

- Rejvíz is a picturesque village in Jeseníky mountains with a guest house of the same name, where you can sit on unique chairs with Rejvíz settlers' carvings. From this place you can set off to a Big moss lake. The way goes on a wooden path protecting this national nature reserve from damage. This largest peat bog in Moravia arose here six or seven thousand years ago.

Tel.: +420 606 418 460, open: May - November 08:00-18:00, [www.zlatehory.cz](http://www.zlatehory.cz), [www.rejviz.info](http://www.rejviz.info)

## Gold ore Mills - Open-Air Museum (Zlatorudné mlýny - skanzen)

- On a picturesque place on Olešnice river near Zlaté Hory you can visit a nature trail Backwoods drifts valley (Údolí ztracených štol). Here also a Mining open-air museum is located. You can see a replica of gold ore mills from 14th century, from the time, when gold was mined in this Region. A small river Olešnice has accumulated gold in its silt for millions of years. Gold has been mined both from the surface and from the depths here. Guided tours are available and visitors can even try to pan for gold and bring a small piece of gold home.

Údolí ztracených štol, Zlaté Hory-Ondřejovice,  
tel.: +420 721 930 684, +420 584 425 397,  
open: May - August Mon - Sun 10:00-17:00, September - October Tue - Sun 10:00-16:00, [www.zlatehory.cz](http://www.zlatehory.cz)

## Regular events

### Velké Losiny, [www.iclosiny.cz](http://www.iclosiny.cz)

May - Moss lake unlocking, Rejvíz

June - Beneficial concert in A Church of Virgin Mary the Helper

July - Forest festival Darkov | Gold days

August - Major fair, Virgin Mary the Helper | Panning for gold, Challenge gold pan

Mikulovice, [www.mikulovice.cz](http://www.mikulovice.cz)

May - International orienteering race MUNA



# Javorník Region and Žulová Region



Ballroom in the Crayfish Valley



## Javorník - Town information centre

Nádražní 160, 790 60 Javorník  
+420 584 440 688, [www.kulturnidumjavornik.cz](http://www.kulturnidumjavornik.cz)

## Javorník - Ecological centre Rychleby

Bílý potok 152, 790 70 Javorník  
+420 583 035 342  
[www.ekocentrumrychleby.cz](http://www.ekocentrumrychleby.cz)

## Information centre Vidnava

Radniční 84, 790 55 Vidnava  
+420 725 636 457, [www.vidnava.cz](http://www.vidnava.cz)

## Žulová - Town library

Josefínské nám. 1, 790 65 Žulová  
+420 584 437 151  
[www.knihovnazulova.webk.cz](http://www.knihovnazulova.webk.cz)



## Town Javorník

Javorník is a town lying in Czech Silesia on north-east foothills of Rychlebské mountains, 22 km from Jeseník. Historical centre of the town forms a town conservation area. In a town museum you can learn a lot about Javorník history. Besides others also a fact that a Vienna representative of music classicism Karl Ditters from Dittersdorf spent 29 years of his life in Javorník. In honour of him a music festival takes place here every year.  
*nám. Svobody 134, tel.: +420 584 440 144, e-mail: [podatelna@mestojavornik.cz](mailto:podatelna@mestojavornik.cz)*

## Town Žulová

The major sight in Žulová is a church with a unique tower. Visitors can also take a look behind the gates of Stone-cutting museum and a gallery of Rychlebské mountains and Žulová hilly area. Nature lovers should definitely visit Nýznerovské waterfalls or flooded quarries.  
[www.zulovsko.cz](http://www.zulovsko.cz)

## Town Vidnava

A town Vidnava is located in Jeseník Region. Its historical centre became a town conservation area in 1992.

*Tel.: +420 588 517 237, e-mail: [infocentrum@vidnava.cz](mailto:infocentrum@vidnava.cz)*

## Chateau Janský Vrch (Zámek Janský vrch)



Chateau Janský Vrch used to serve as a summer residence of Vratislav bishops and archbishops till 1945. Inside you can admire, besides others, one of the biggest country exhibits of pipe collections.  
*Zámek 60, tel.: +420 584 440 286, open: April, October Sat, Sun and bank holidays 09:00-15:00, May - August Tue - Sun 09:00- 16:00, September Tue - Sun 09:00-15:00, [www.janskyvrch.cz](http://www.janskyvrch.cz)*

## Crayfish Valley - Ballroom (Račí údolí - Tančírna)

Directly under Devil's pulpits a newly reconstructed ballroom called Georgshalle is situated. In the past it used to be a favourite place for celebrations, parties and balls. Nowadays it serves as a shelter for tourists and presents Rychlebské mountains as a whole. On the ground floor there are rooms for hikers and cyclists, a service room for crosscountry skiers and cyclists and a room with promotional materials.

*Tel.: +420 583 034 125, open: January - December Tue - Sun 10:00-17:00, e-mail: [tancirna@bernartice.eu](mailto:tancirna@bernartice.eu), [www.bernartice.eu](http://www.bernartice.eu)*

## Village Černá Voda

Name of the village comes from the colour of water at the bottom of the local Černý potok (Black brook). Its surroundings belongs to the most charming areas of the Czech Republic. It is full of woody hills, meadows and a group of more than twenty ponds on Plavný brook. What is more, you can walk on a nature trail.

[www.obeccernavoda.cz](http://www.obeccernavoda.cz)

## Village Bílá Voda and a Museum Bílá Voda (Bílá Voda a Muzeum Bílá Voda)

Bílá Voda is the northernmost Czech populated town in Silesia, however, it used to be mainly a place of strategic location. A piarist dormitory, today's monastery belonging to the church of Visitation of the Virgin Mary, was built here. In the museum you can see an exposition called History of internment, isolation and integration. Part of the exposition is devoted to the history of the Region and the village, other part to intern nuns placed to the local dormitory, today's monastery. About a thousand nuns were forced to stay here, most of them were buried on the local cemetery.

*Muzeum Bílá Voda, Bílá Voda 68,*

*Tel.: + 420 725 142 241*

*e-mail: [info@muzeumbilavoda.cz](mailto:info@muzeumbilavoda.cz),*

*[www.muzeumbilavoda.cz](http://www.muzeumbilavoda.cz)*

## Nýznerovské Waterfalls (Nýznerovské vodopády)

These waterfalls are located about 5 km south-west from Žulová village. They form a group of small waterfalls and cascades in a valley of Stříbrný potok (Silver brook).

[www.zulovsko.cz](http://www.zulovsko.cz)

## Venus's Bowls (Venušinyisky)

National nature sanctuary Venušinyisky are granite rock hollows reminding giant bowls. They are located in a small rock town on the peak of Smolný hill near village Velká Kraš in Rychlebské mountains.

## Town Museum Javorník (Městské muzeum)

In the exposition you can visit a peasant's room, a shoemaker's workshop and a historical pharmacy including original equipment.

*Nádražní 160, Javorník, tel.: +420 584 440 276,*

*open: May - September: Mon - Fri 08:00-16:30,*

*Sat 10:00-16:00, October - April Mon - Fri 07:00-15:30,*

*e-mail: [info@mksjavornik.cz](mailto:info@mksjavornik.cz), [www.jeseniky.net](http://www.jeseniky.net)*



## TRAVEL TIP



**Lookout Borůvková hora - Blueberry hill (Rozhledna Borůvková hora)** - From the lookout platform, which is 24 m high, visitors can enjoy a breathtaking view of Otmuchow lake, Nyske lake, Šerák, Praděd, Smrk and Králický Sněžník. Hiking, cycling and cross country skiing trails lead to Borůvková hora. To the lookout you can get from Javorník, Travná, Bílá Voda but also from Poland. It is open all year and the entrance is free.

*Tel.: +420 731 551 020, [www.boruvkovahora.websnadno.cz](http://www.boruvkovahora.websnadno.cz)*

**Rychleby Trails - (Rychlebské stezky)** - are trails for mountain bikes in the surroundings of Černá Voda. They have been created by reconstructions of old hunting pathways and offer the best experience to the riders. These trails form several connected circuits beginning and ending in Černá Voda. It is not important how far you go but where you go. Enjoy the magnificent scenery of Rychlebské mountains with deep forests, giant granite stones, deserted quarries and mountain creeks. The trails in total length of more than 40 km lead through broken stones, through fords, on clay fields and sometimes on man-made paths made of stones.

*Tel.: +420 773 700 211, +420 721 412 754 (IC)*

*[www.rychlebskestezky.cz](http://www.rychlebskestezky.cz)*

## Regular events

**Javorník, [www.kulturnidumjavornik.cz](http://www.kulturnidumjavornik.cz)**

**May** - May climbing to Borůvková hora

**June** - Days of Javorník Region, town festival | Rychlebská 7, 20, 30 and 40

**September** - October - Karl Ditters's International music festival

# Bruntál Region and Rýmařov Region



Sovinec castle



## IC Karlova Studánka

+420 554 772 004  
[www.jeseniky-praded.cz](http://www.jeseniky-praded.cz)

## Urbno pod Pradědem

+420 554 751 585  
[www.jeseniky-praded.cz](http://www.jeseniky-praded.cz)

## IC in Town Museum Rýmařov

nám. Miru 6, Rýmařov  
+420 554 212 381  
[www.rymarov.cz](http://www.rymarov.cz), [www.rymarovsko.cz](http://www.rymarovsko.cz)

## Town infocentre Bruntál

nám. Miru 7, Bruntál  
+420 554 706 525, [www.mubruntal.cz](http://www.mubruntal.cz)



## Town Rýmařov

Rýmařov is the westernmost town of Moravskoslezský Region, the first records about the town date back to 1351. In 1938 Rýmařov, as a border town, became a part of the Third Reich. At the beginning of 1945 the town was free again, however, the original inhabitants were (on the basis of Benes decree) moved away.  
[www.informarov.cz](http://www.informarov.cz)

## Chapel of the Visitation of Virgin Mary (Kaple Navštívení Panny Marie)

The chapel was created on the place of an old religious building between 1710 and 1715 next to an old hermitage. It serves not only for religious ceremonies but also important cultural and social events take place here. It is open to the public via Town Museum Rýmařov.

Tel.: +420 554 254 382, +420 739 915 679,  
[www.muzeumrymarov.cz](http://www.muzeumrymarov.cz)

## Chateau Bruntál (Zámek Bruntál)

Chateau Bruntál with a Renaissance arcade yard and a clock tower is a significant cultural sight of the Region. Inside the chateau you can also find a Regional museum in Bruntál.

Tel.: +420 554 717 947, +420 554 709 145,  
open: April - October Tue - Sun 09:00-12:00 and 12:30-16:00, May - September Mon - Sun 09:00-17:00,  
[www.bruntal-zamek.cz](http://www.bruntal-zamek.cz), [www.mubruntal.cz](http://www.mubruntal.cz)

## Sovinec Castle (Hrad Sovinec)

Sovinec castle is situated on the south edge of Nížký Jeseník, 13 km from Rýmařov. It shows a well-preserved construction-technical presentation of Baroque military architecture. In the season various events for families and children take place in the castle yard.

Tel.: +420 554 295 113, +420 777 205 029,  
open: April, October Tue - Sun 09:00-16:00,  
May - September Tue - Sun 09:00-17:00, [www.sovinec.cz](http://www.sovinec.cz)

## Saddle Skřítek (Sedlo Skřítek)

Mountain saddle lies 877 m above sea level. It serves as a starting point of many hiking trails. The most attractive one is a trail along the ridge to Jelení studánka (Deer spring), Petrovy kameny (Peter's stones) and Ovcárna.

[www.navstivtejeseniky.cz](http://www.navstivtejeseniky.cz)

## Town Museum Rýmařov (Městské muzeum)

IC in Town Museum Rýmařov, nám. Miru 6, Rýmařov,  
tel.: +420 554 212 381, open: Mon-Fri 08:30-12:00, 13:00-17:00,  
Sat 09:00-12:00 and 13:00-16:00, Sun 13:00-16:00,  
[www.informarov.cz](http://www.informarov.cz), [www.muzeumrymarov.cz](http://www.muzeumrymarov.cz)

## Coalman's Hill (Uhlířský vrch)



Uhlířský vrch with its peak 672 m above sea level is a former volcano and so is a significant nature sanctuary and a natural lookout. To a church on the top leads a 500 m long four-row linden tree alley from 1770, which is a nature sanctuary as well. This place crosses an educative nature trail. On the top a pilgrimage church of the Virgin Mary the Helper was opened in 1758.  
Tel.: +420 554 713 099, [www.mubruntal.cz](http://www.mubruntal.cz)

## The Dam Slezská Harta

A valley reservoir Slezská Harta on Moravice river offers many possibilities of how to spend summer season actively. You can go bathing, sailing, do fishing, yachting and windsurfing. A part of this reservoir forms also a small water power station.

[www.slezska-harta.cz](http://www.slezska-harta.cz)

## Mountain Spa Resort Karlova Studánka (Horské lázně Karlova Studánka)

In Karlova Studánka you can find many springs of natural carbon mineral water used into baths as well as for drinking treatment. There is the purest air in all Czech Republic. In this resort you can visit a salt cave, vaku well, vibrosauna and a rehabilitation wellness swimming pool in a building of so called Summer spa.  
Tel.: +420 554 798 111, [www.k.studanka.cz](http://www.k.studanka.cz)

## Big Hollow (Velká Kotlina)

Velká kotlina is the most valuable locality in Jeseníky. It stretches on the hillsides of Vysoká hole and many species of flowers growing here cannot be found anywhere else. Through the nature reserve leads a difficult, 7 km long nature trail with lookout platforms and information boards.  
[www.navstivtejeseniky.cz](http://www.navstivtejeseniky.cz)

## Hotel Slunce Rýmařov

Jesenická 107/4, Rýmařov,  
tel.: +420 554 212 790, +420 777 273 776,  
open: Mon - Fri 16:00-21:00, Sat - Sun 10:00-21:00,  
e-mail: [hotelslunce@jeseniky.com](mailto:hotelslunce@jeseniky.com),  
[www.hotelslunce.jeseniky.com](http://www.hotelslunce.jeseniky.com)



## TRAVEL TIP

**Rešovské Waterfalls (Rešovské vodopády)** - Small river Huntava, rising in Stříbrné Hory near Horní Město, has on its upper stream created a deep rocky valley with many cascades and waterfalls, the biggest in Nížký Jeseník.

[www.rymarovsko.cz](http://www.rymarovsko.cz)



**Waterfalls of Bílá Opava (Vodopády Bílé Opavy)** - Waterfalls of Bílá Opava is the name for the deeply cut rocky canyon of Bílá Opava river. It is located on a south hillside of Praděd near Karlova Studánka village. On a 3 km stretch the river creates amazing rapids, cascades and waterfalls, the biggest one is almost 8 m high.

[www.vodopady-bile-opavy.cz](http://www.vodopady-bile-opavy.cz)

## Regular events

**Rýmařov, [www.rymarovsko.cz](http://www.rymarovsko.cz)**

**July** - Jan Suk's Memorial, Rýmařov | Horní Město festival, Horní Město

**August** - Pilgrimage of Virgin Mary the Snow with a procession on the way of the Cross, Ruda | Indiana Jones, Rýmařov | Malá Morava festival, Malá Morava, football pitch | Blueberry festival Malá Morávka, Karlov

**September** - Snitzel Festival Malá Morávka, Karlov | Rýmařov 50, Rýmařov

**Bruntál, [www.mubruntal.cz](http://www.mubruntal.cz)**

**May** - Petr Hábl's Memorial, „Around Harta“, cycling and hiking trip, starts in premises of FIDES company 8-10am. | Night of Museums, chateau Bruntál | Spring welcoming, náměstí Miru (Peace square) | Nationwide meeting of KPH representatives, Town theatre, Bruntál

**June** - International night run through Bruntál, náměstí Miru, Beer and ease days, náměstí Miru

**July** - Jazz festival, náměstí Miru

**September** - Bruntál indian summer - 800 minutes of music, chateau gardens



# Tourist Card free admission

Olomouc • Central Moravia • Jeseníky Mountains

## OLOMOUC CARD *region*

The Olomouc region Card is a tourist card allowing you **to visit attractive sights FREE OF CHARGE** – castles, chateaux, museums, ZOO etc. – **in Olomouc, in Central Moravia and in the Jeseníky Mountains**. Furthermore, you can make use of attractive discounts many sights, i.e. admission fees to selected sights and tourist destinations, water parks, sports and leisure centres, restaurants and hotels.

With each Card you buy, you will get a **100-page colour brochure** – **a tourist guide, FREE OF CHARGE**. Here you will find information about attractive sights where you can use your Olomouc region Card, including contact details and opening times.

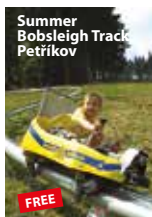


**FREE** 70 sights  
available at

• Castles • Chateaux • Museums • ZOO Olomouc  
• Public Transportation in Olomouc • Botanical Garden • Arboretum • Minigolf • Golf

**DISCOUNT** 100 sights  
available at

• Caves • Sport • Restaurants  
• Accommodation • Spa Procedures  
• Swimming pools • Water Parks  
• Adrenaline Experiences



The vendors, up-to-date list of involved sites, and trip proposals with the ORC are at the

**[www.olomoucregioncard.cz](http://www.olomoucregioncard.cz)**